

Product datasheet for **TA357953**

CPVL Rabbit Polyclonal Antibody

Product data:

Product Type:	Primary Antibodies
Applications:	WB
Reactivity:	Human
Host:	Rabbit
Clonality:	Polyclonal
Specificity:	Expected reactivity: Cow, Dog, Guinea Pig, Horse, Human, Mouse, Rabbit, Rat Homology: Cow: 86%; Dog: 93%; Guinea Pig: 92%; Horse: 92%; Human: 100%; Mouse: 86%; Rabbit: 77%; Rat: 86%
Formulation:	Liquid. Purified antibody supplied in 1x PBS buffer with 0.09% (w/v) sodium azide and 2% sucrose. <i>Note that this product is shipped as lyophilized powder to China customers.</i>
Concentration:	lot specific
Purification:	Affinity Purified
Conjugation:	Unconjugated
Storage:	For short term use, store at 2-8°C up to 1 week. For long term storage, store at -20°C in small aliquots to prevent freeze-thaw cycles.
Stability:	Shelf life: one year from despatch.
Predicted Protein Size:	52kDa
Gene Name:	carboxypeptidase, vitellogenic like
Database Link:	NP_112601 Entrez Gene 54504 Human Q9H3G5
Background:	The protein encoded by this gene is a carboxypeptidase and bears strong sequence similarity to serine carboxypeptidases. Carboxypeptidases are a large class of proteases that act to cleave a single amino acid from the carboxy termini of proteins or peptides. The exact function of this protein, however, has not been determined. At least two alternatively spliced transcripts which encode the same protein have been observed.
Synonyms:	HVLP; MGC10029; OTTHUMP00000202581; VLP



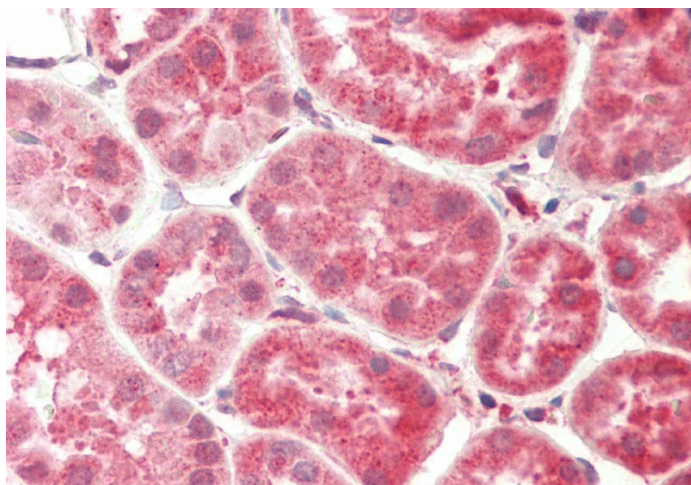
[View online »](#)

Protein Families: Druggable Genome, Protease

Product images:



WB Suggested Anti-CPVL Antibody
Titration: 1.0 ug/ml
Positive Control: MDA-MB-4355 Whole Cell



Rabbit Anti-CPVL antibody
Catalog Number: ARP61770
Formalin Fixed Paraffin Embedded Tissue:
Human Kidney
Primary antibody Concentration: 1:100
Secondary Antibody: Donkey anti-Rabbit-Cy3
Secondary Antibody Concentration: 1:200
Magnification: 20x
Exposure Time: 0.5-2.0sec