

Product datasheet for **TA357652**

Aplnr Rabbit Polyclonal Antibody

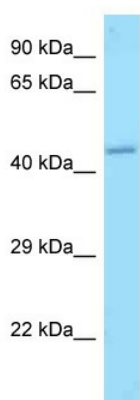
Product data:

Product Type:	Primary Antibodies
Applications:	WB
Reactivity:	Mouse
Host:	Rabbit
Clonality:	Polyclonal
Specificity:	Expected reactivity: Dog, Horse, Human, Mouse, Rabbit, Rat Homology: Dog: 86%; Horse: 93%; Human: 100%; Mouse: 100%; Rabbit: 86%; Rat: 86%
Formulation:	Liquid. Purified antibody supplied in 1x PBS buffer with 0.09% (w/v) sodium azide and 2% sucrose. <i>Note that this product is shipped as lyophilized powder to China customers.</i>
Concentration:	lot specific
Purification:	Affinity Purified
Conjugation:	Unconjugated
Storage:	For short term use, store at 2-8°C up to 1 week. For long term storage, store at -20°C in small aliquots to prevent freeze-thaw cycles.
Stability:	Shelf life: one year from despatch.
Predicted Protein Size:	42kDa
Gene Name:	apelin receptor
Database Link:	NP_035914 Entrez Gene 23796 Mouse Q9WV08
Background:	Aplnr is a receptor for apelin coupled to G proteins that inhibit adenylate cyclase activity.
Synonyms:	AGTRL1; APJ; APJR; FLJ90771; FLJ96609; HG11; MGC45246



[View online »](#)

Product images:



WB Suggested Anti-Aplnr Antibody
Titration: 1.0 ug/ml
Positive Control: Mouse Pancreas