

Product datasheet for **TA357588**

Numb Rabbit Polyclonal Antibody

Product data:

Product Type:	Primary Antibodies
Applications:	IHC, WB
Reactivity:	Human, Mouse, Rat
Host:	Rabbit
Clonality:	Polyclonal
Specificity:	Expected reactivity: Cow, Dog, Guinea Pig, Horse, Human, Mouse, Pig, Rabbit, Rat Homology: Cow: 93%; Dog: 93%; Guinea Pig: 86%; Horse: 93%; Human: 100%; Mouse: 93%; Pig: 93%; Rabbit: 93%; Rat: 93%
Formulation:	Liquid. Purified antibody supplied in 1x PBS buffer with 0.09% (w/v) sodium azide and 2% sucrose. <i>Note that this product is shipped as lyophilized powder to China customers.</i>
Concentration:	lot specific
Purification:	Affinity Purified
Conjugation:	Unconjugated
Storage:	For short term use, store at 2-8°C up to 1 week. For long term storage, store at -20°C in small aliquots to prevent freeze-thaw cycles.
Stability:	Shelf life: one year from despatch.
Predicted Protein Size:	66kDa
Gene Name:	numb homolog (Drosophila)
Database Link:	NP_035079 Entrez Gene 8650 Human Entrez Gene 29419 Rat Entrez Gene 18222 Mouse Q9QZS3-2
Background:	Numb plays a role in the process of neurogenesis. It is required throughout embryonic neurogenesis to maintain neural progenitor cells, also called radial glial cells (RGCs), by allowing their daughter cells to choose progenitor over neuronal cell fate. It is not required for the proliferation of neural progenitor cells before the onset of neurogenesis. It is also involved postnatally in the subventricular zone (SVZ) neurogenesis by regulating SVZ neuroblasts survival and ependymal wall integrity. It may also mediate local repair of brain ventricular wall damage.



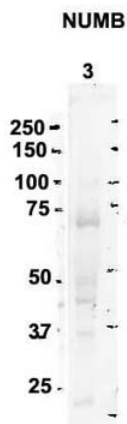
[View online »](#)

Synonyms: h-Numb; S171

Product images:

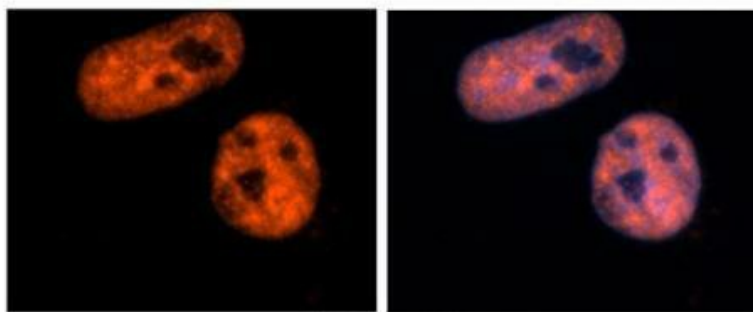


Numb antibody - C-terminal region (TA357588) validated by WB using Mouse Brain lysate at 1.0ug/ml.



Sample Type: 3. rat brain extract (80ug)
Primary Antibody Dilution: 2ug/ml
Secondary Antibody: IRDye 800CW goat anti-rabbit from Li-COR Bioscience
Secondary Antibody Dilution: 1: 20,000
Image Submitted by: Yuzhi Chen
 University of Arkansas for Medical Science

See Immunoblot 2 Data for more information.

NUMB

Antibody--RED
DAPI--Blue

See IHC 1 Data and Customer Feedback for more information

Researcher: Dr. Yuzhi Chen, University of Arkansas for Medical Science
Application: IHC
Species+tissue/cell type: Human brain stem cells
Primary antibody dilution: 1:500
Secondary antibody: Goat anti-rabbit Alexa-Fluor 594
Secondary antibody dilution: 1:1000