

Product datasheet for **TA357509**

AXL Rabbit Polyclonal Antibody

Product data:

Product Type:	Primary Antibodies
Applications:	WB
Reactivity:	Human
Host:	Rabbit
Clonality:	Polyclonal
Immunogen:	The immunogen is a synthetic peptide directed towards the C terminal region of human AXL
Specificity:	Expected reactivity: Cow, Dog, Guinea Pig, Horse, Human, Mouse, Pig, Rat Homology: Cow: 79%; Dog: 79%; Guinea Pig: 85%; Horse: 93%; Human: 100%; Mouse: 85%; Pig: 86%; Rat: 85%
Formulation:	Liquid. Purified antibody supplied in 1x PBS buffer with 0.09% (w/v) sodium azide and 2% sucrose. <i>Note that this product is shipped as lyophilized powder to China customers.</i>
Concentration:	lot specific
Purification:	Affinity Purified
Conjugation:	Unconjugated
Storage:	For short term use, store at 2-8°C up to 1 week. For long term storage, store at -20°C in small aliquots to prevent freeze-thaw cycles.
Stability:	Shelf life: one year from despatch.
Predicted Protein Size:	97kDa
Gene Name:	AXL receptor tyrosine kinase
Database Link:	NP_001690 Entrez Gene 558 Human P30530



[View online »](#)

Background:

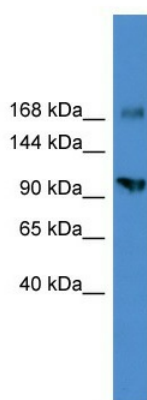
The protein encoded by this gene is a member of the receptor tyrosine kinase subfamily. Although it is similar to other receptor tyrosine kinases, this protein represents a unique structure of the extracellular region that juxtaposes IgL and FNIII repeats. It transduces signals from the extracellular matrix into the cytoplasm by binding growth factors like vitamin K-dependent protein growth-arrest-specific gene 6. It is involved in the stimulation of cell proliferation and can also mediate cell aggregation by homophilic binding. Alternatively spliced transcript variants encoding different isoforms have been identified.

Synonyms:

JTK11; UFO

Protein Families:

Druggable Genome, Protein Kinase, Transmembrane

Product images:

WB Suggested Anti-AXL Antibody Titration: 0.2-1 ug/ml
ELISA Titer: 1:312500
Positive Control: Human Placenta