

Product datasheet for **TA357465**

ALDH1A1 Rabbit Polyclonal Antibody

Product data:

Product Type:	Primary Antibodies
Applications:	IHC, WB
Reactivity:	Human
Host:	Rabbit
Clonality:	Polyclonal
Immunogen:	The immunogen is a synthetic peptide directed towards the middle region of human ALDH1A1
Specificity:	Expected reactivity: Cow, Dog, Guinea Pig, Horse, Human, Mouse, Rabbit, Rat, Sheep, Yeast Homology: Cow: 93%; Dog: 93%; Guinea Pig: 93%; Horse: 93%; Human: 100%; Mouse: 86%; Rabbit: 79%; Rat: 93%; Sheep: 93%; Yeast: 77%
Formulation:	Liquid. Purified antibody supplied in 1x PBS buffer with 0.09% (w/v) sodium azide and 2% sucrose. <i>Note that this product is shipped as lyophilized powder to China customers.</i>
Concentration:	lot specific
Purification:	Affinity Purified
Conjugation:	Unconjugated
Storage:	For short term use, store at 2-8°C up to 1 week. For long term storage, store at -20°C in small aliquots to prevent freeze-thaw cycles.
Stability:	Shelf life: one year from despatch.
Predicted Protein Size:	55kDa
Gene Name:	aldehyde dehydrogenase 1 family member A1
Database Link:	NP_000680 Entrez Gene 216 Human P00352



[View online »](#)

Background:

This protein belongs to the aldehyde dehydrogenases family of proteins. Aldehyde dehydrogenase is the second enzyme of the major oxidative pathway of alcohol metabolism. Two major liver isoforms of this enzyme, cytosolic and mitochondrial, can be distinguished by their electrophoretic mobilities, kinetic properties, and subcellular localizations. Most Caucasians have two major isozymes, while approximately 50% of Orientals have only the cytosolic isozyme, missing the mitochondrial isozyme. A remarkably higher frequency of acute alcohol intoxication among Orientals than among Caucasians could be related to the absence of the mitochondrial isozyme. This gene encodes a cytosolic isoform, which has a high affinity for aldehydes.

Synonyms:

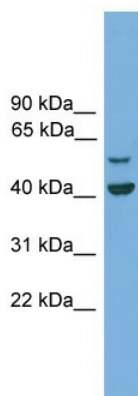
ALDC; ALDH-E1; ALDH1; ALDH11; ALHDII; MGC2318; PUMB1; RALDH1

Protein Families:

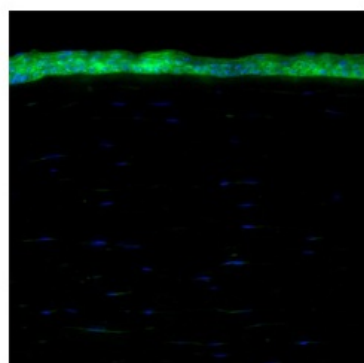
Druggable Genome, ES Cell Differentiation/IPS

Protein Pathways:

Metabolic pathways, Retinol metabolism

Product images:

WB Suggested Anti-ALDH1A1 Antibody Titration:
0.2-1 ug/ml
ELISA Titer: 1:312500
Positive Control: ACHN cell lysate ALDH1A1 is supported by BioGPS gene expression data to be expressed in ACHN



Sample Type: Human Cornea
Dilution: 1:200