

## Product datasheet for **TA357216**

### Sesn1 Rabbit Polyclonal Antibody

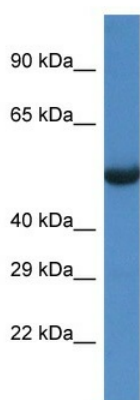
#### Product data:

Product Type:	Primary Antibodies
Applications:	WB
Reactivity:	Rat
Host:	Rabbit
Clonality:	Polyclonal
Specificity:	<b>Expected reactivity:</b> Cow, Dog, Guinea Pig, Horse, Human, Mouse, Rabbit, Rat, Zebrafish <b>Homology:</b> Cow: 100%; Dog: 100%; Guinea Pig: 100%; Horse: 100%; Human: 100%; Mouse: 100%; Rabbit: 100%; Rat: 100%; Zebrafish: 100%
Formulation:	Liquid. Purified antibody supplied in 1x PBS buffer with 0.09% (w/v) sodium azide and 2% sucrose. <i>Note that this product is shipped as lyophilized powder to China customers.</i>
Concentration:	lot specific
Purification:	Affinity Purified
Conjugation:	Unconjugated
Storage:	For short term use, store at 2-8°C up to 1 week. For long term storage, store at -20°C in small aliquots to prevent freeze-thaw cycles.
Stability:	Shelf life: one year from despatch.
Predicted Protein Size:	51kDa
Gene Name:	sestrin 1
Database Link:	<a href="#">NP_001099866</a> <a href="#">Entrez Gene 294518 Rat</a> <a href="#">D3ZJU4</a>
Background:	The function of this protein remains unknown.
Synonyms:	MGC138241; MGC142129; PA26; RP11-787I22.1; SEST1



[View online »](#)

Product images:



WB Suggested Anti-Sesn1 Antibody  
Titration: 1.0 ug/ml  
Positive Control: Rat Brain