

Product datasheet for **TA357131**

Ldha Rabbit Polyclonal Antibody

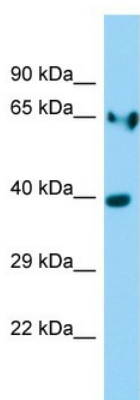
Product data:

Product Type:	Primary Antibodies
Applications:	WB
Reactivity:	Rat
Host:	Rabbit
Clonality:	Polyclonal
Immunogen:	The immunogen is a synthetic peptide directed towards the middle region of Rat Ldha
Specificity:	Expected reactivity: Cow, Dog, Goat, Guinea Pig, Horse, Human, Mouse, Pig, Rabbit, Rat, Sheep, Zebrafish Homology: Cow: 92%; Dog: 93%; Goat: 92%; Guinea Pig: 92%; Horse: 92%; Human: 100%; Mouse: 92%; Pig: 93%; Rabbit: 93%; Rat: 93%; Sheep: 92%; Zebrafish: 92%
Formulation:	Liquid. Purified antibody supplied in 1x PBS buffer with 0.09% (w/v) sodium azide and 2% sucrose. <i>Note that this product is shipped as lyophilized powder to China customers.</i>
Concentration:	lot specific
Purification:	Affinity Purified
Conjugation:	Unconjugated
Storage:	For short term use, store at 2-8°C up to 1 week. For long term storage, store at -20°C in small aliquots to prevent freeze-thaw cycles.
Stability:	Shelf life: one year from despatch.
Predicted Protein Size:	36kDa
Gene Name:	lactate dehydrogenase A
Database Link:	NP_058721 Entrez Gene 24533 Rat P04642
Background:	Ldha mRNA expression in fibroblasts increases in response to induction by epidermal growth factor or serum.
Synonyms:	GSD11; LDH-A; LDH-M; LDH1; LDHM; PIG19



[View online »](#)

Product images:



WB Suggested Anti-Ldha Antibody
Titration: 1.0 ug/ml
Positive Control: Rat Stomach