

Product datasheet for **TA356956**

PARK7 Rabbit Polyclonal Antibody

Product data:

Product Type:	Primary Antibodies
Applications:	IHC, WB
Reactivity:	Human, Mouse
Host:	Rabbit
Clonality:	Polyclonal
Immunogen:	The immunogen is a synthetic peptide directed towards the C terminal region of human PARK7
Specificity:	Expected reactivity: Cow, Dog, Guinea Pig, Horse, Human, Mouse, Pig, Rabbit, Rat Homology: Cow: 100%; Dog: 100%; Guinea Pig: 79%; Horse: 100%; Human: 100%; Mouse: 100%; Pig: 100%; Rabbit: 93%; Rat: 100%
Formulation:	Liquid. Purified antibody supplied in 1x PBS buffer with 0.09% (w/v) sodium azide and 2% sucrose. <i>Note that this product is shipped as lyophilized powder to China customers.</i>
Concentration:	lot specific
Purification:	Affinity Purified
Conjugation:	Unconjugated
Storage:	For short term use, store at 2-8°C up to 1 week. For long term storage, store at -20°C in small aliquots to prevent freeze-thaw cycles.
Stability:	Shelf life: one year from despatch.
Predicted Protein Size:	20kDa
Gene Name:	Parkinsonism associated deglycase
Database Link:	NP_009193 Entrez Gene 57320 Mouse Entrez Gene 11315 Human Q99497



[View online »](#)

Background:

PARK7 belongs to the peptidase C56 family of proteins. It acts as a positive regulator of androgen receptor-dependent transcription. It may also function as a redox-sensitive chaperone, as a sensor for oxidative stress, and it apparently protects neurons against oxidative stress and cell death. Defects in this gene are the cause of autosomal recessive early-onset Parkinson disease 7. The product of this gene belongs to the peptidase C56 family of proteins. It acts as a positive regulator of androgen receptor-dependent transcription. It may also function as a redox-sensitive chaperone, as a sensor for oxidative stress, and it apparently protects neurons against oxidative stress and cell death. Defects in this gene are the cause of autosomal recessive early-onset Parkinson disease 7. Two transcript variants encoding the same protein have been identified for this gene.

Synonyms:

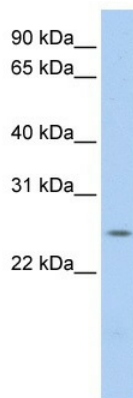
DJ-1; DJ1; FLJ27376; FLJ34360; FLJ92274; OTTHUMP00000001350; OTTHUMP00000001351

Protein Families:

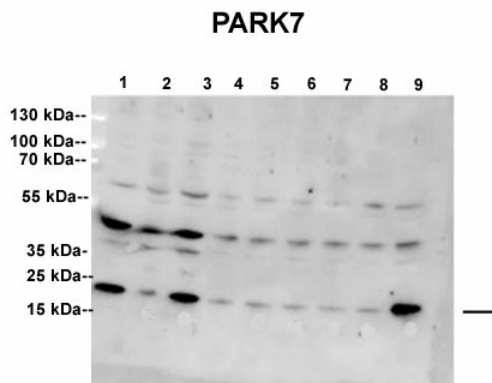
Druggable Genome, Protease

Protein Pathways:

Parkinson's disease

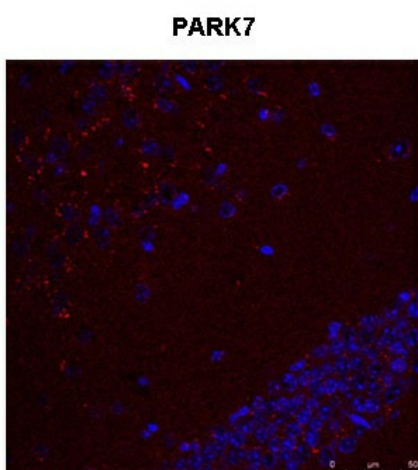
Product images:

WB Suggested Anti-PARK7 Antibody Titration: 0.2-1 ug/ml
ELISA Titer: 1:62500
Positive Control: HepG2 cell lysate



See Immunoblot 2 Data for more information.

PARK7 antibody - C-terminal region (TA356956) validated by WB using SH-SY5Y cell line at 1:500. PARK7 is supported by BioGPS gene expression data to be expressed in SHSY5Y



Sample Type: Mouse Brain Slices
Red: primary
Blue: DAPI
Primary Dilution: 1:400
Secondary Antibody: Anti-Rabbit IgG Alexa 594
Secondary Dilution: 1:400
Image Submitted By: Adahir Labrador-Garrido and Cintia Roodveldt
 University of Seville