

Product datasheet for **TA356213**

Pannexin 1 (PANX1) Rabbit Polyclonal Antibody

Product data:

Product Type:	Primary Antibodies
Applications:	IHC, WB
Reactivity:	Human, Mouse
Host:	Rabbit
Clonality:	Polyclonal
Immunogen:	The immunogen is a synthetic peptide directed towards the middle region of human PANX1
Specificity:	Expected reactivity: Cow, Dog, Guinea Pig, Horse, Human, Mouse, Rabbit, Rat Homology: Cow: 92%; Dog: 83%; Guinea Pig: 86%; Horse: 100%; Human: 100%; Mouse: 77%; Rabbit: 93%; Rat: 93%
Formulation:	Liquid. Purified antibody supplied in 1x PBS buffer with 0.09% (w/v) sodium azide and 2% sucrose. <i>Note that this product is shipped as lyophilized powder to China customers.</i>
Concentration:	lot specific
Purification:	Affinity Purified
Conjugation:	Unconjugated
Storage:	For short term use, store at 2-8°C up to 1 week. For long term storage, store at -20°C in small aliquots to prevent freeze-thaw cycles.
Stability:	Shelf life: one year from despatch.
Predicted Protein Size:	47kDa
Gene Name:	pannexin 1
Database Link:	NP_056183 Entrez Gene 55991 Mouse Entrez Gene 24145 Human Q96RD7



[View online »](#)

Background:

PANX1 belongs to the innexin family. Innexin family members are the structural components of gap junctions. This protein and pannexin 2 are abundantly expressed in central nerve system (CNS) and are coexpressed in various neuronal populations. Studies in *Xenopus* oocytes suggest that this protein alone and in combination with pannexin 2 may form cell type-specific gap junctions with distinct properties. The protein encoded by this gene belongs to the innexin family. Innexin family members are the structural components of gap junctions. This protein and pannexin 2 are abundantly expressed in central nerve system (CNS) and are coexpressed in various neuronal populations. Studies in *Xenopus* oocytes suggest that this protein alone and in combination with pannexin 2 may form cell type-specific gap junctions with distinct properties.

Synonyms:

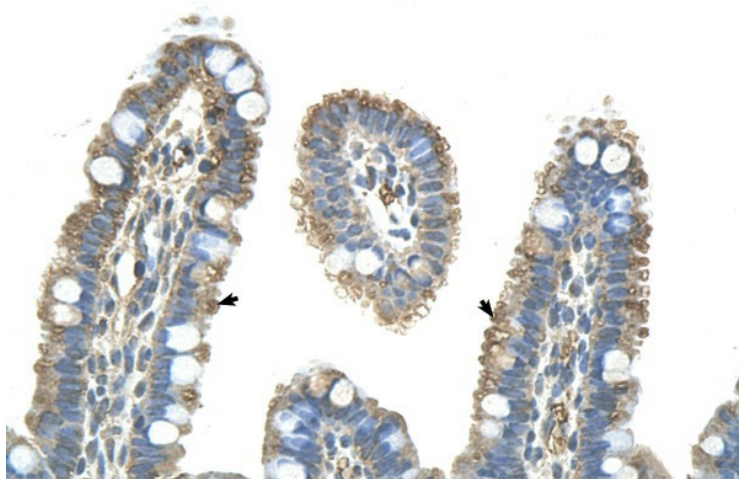
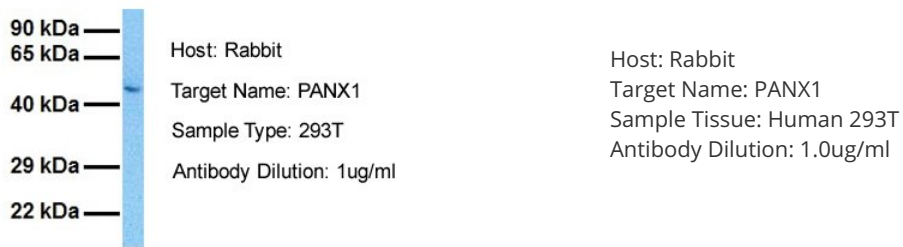
innexin; MGC21309; MRS1; PX1; UNQ2529

Protein Families:

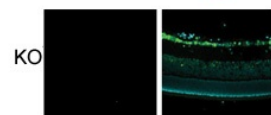
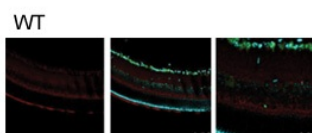
Transmembrane

Product images:

PANX1



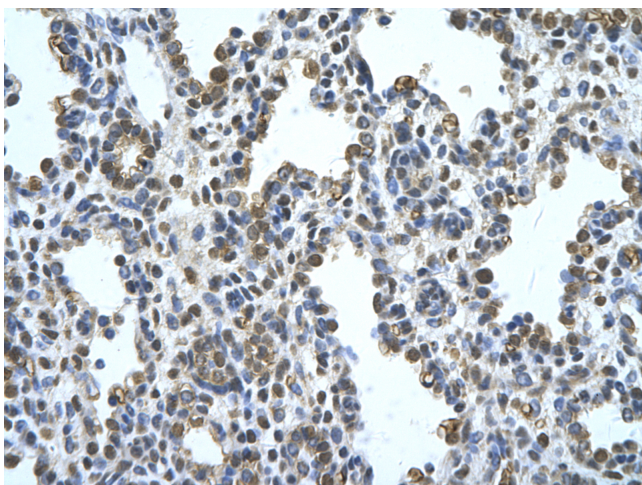
Human Intestine



Legend
 Magenda = DAPI for all nuclei
 Green = neuronal nuclei

**all PANX1 labeling is in the red channel

Sample Type: Mouse Retina and Knockout PANX-1 Mouse Tissue



Rabbit Anti-PANX1 Antibody
 Catalog Number: ARP42783
 Paraffin Embedded Tissue: Human neural cell
 Cellular Data: Epithelial cells of renal tubule
 Antibody Concentration: 4.0-8.0 ug/ml
 Magnification: 400X