

## Product datasheet for **TA355982**

### Klf4 Rabbit Polyclonal Antibody

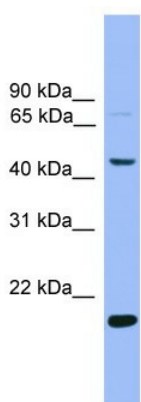
#### Product data:

Product Type:	Primary Antibodies
Applications:	WB
Reactivity:	Human, Mouse
Host:	Rabbit
Clonality:	Polyclonal
Immunogen:	The immunogen is a synthetic peptide corresponding to a region of Mouse
Specificity:	<b>Expected reactivity:</b> Cow, Dog, Horse, Human, Mouse, Pig, Rabbit, Rat, Sheep <b>Homology:</b> Cow: 93%; Dog: 93%; Horse: 93%; Human: 100%; Mouse: 86%; Pig: 93%; Rabbit: 93%; Rat: 86%; Sheep: 93%
Formulation:	Liquid. Purified antibody supplied in 1x PBS buffer with 0.09% (w/v) sodium azide and 2% sucrose. <i>Note that this product is shipped as lyophilized powder to China customers.</i>
Concentration:	lot specific
Purification:	Affinity Purified
Conjugation:	Unconjugated
Storage:	For short term use, store at 2-8°C up to 1 week. For long term storage, store at -20°C in small aliquots to prevent freeze-thaw cycles.
Stability:	Shelf life: one year from despatch.
Predicted Protein Size:	51kDa
Gene Name:	Kruppel-like factor 4 (gut)
Database Link:	<a href="#">NP_034767</a> <a href="#">Entrez Gene 9314 Human</a> <a href="#">Entrez Gene 16600 Mouse</a> <a href="#">Q60793</a>
Background:	The function of Klf4 remains unknown.
Synonyms:	EZF; GKLF



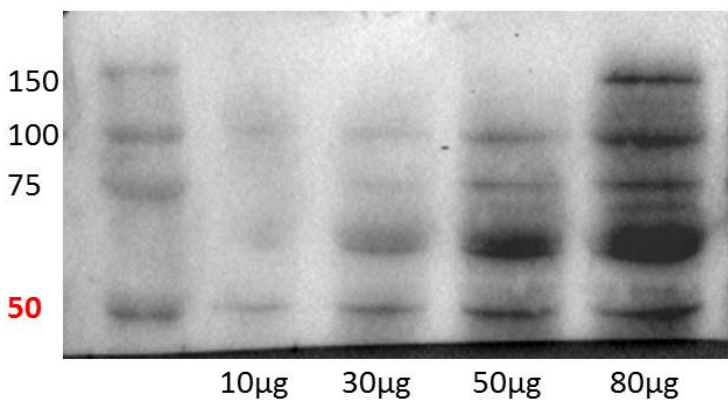
[View online »](#)

Product images:



WB Suggested Anti-Klf4 Antibody Titration: 0.2-1 ug/ml  
 ELISA Titer: 1:1562500  
 Positive Control: Mouse Kidney

KLF4 (38429) – 1:1000



Human lung cell line