

## Product datasheet for **TA355930**

### Runx1 Rabbit Polyclonal Antibody

#### Product data:

Product Type:	Primary Antibodies
Applications:	WB
Reactivity:	Mouse
Host:	Rabbit
Clonality:	Polyclonal
Immunogen:	The immunogen is a synthetic peptide directed towards the N-terminal region of MOUSE Runx1
Specificity:	<b>Expected reactivity:</b> Cow, Dog, Guinea Pig, Human, Mouse, Rabbit, Rat <b>Homology:</b> Cow: 79%; Dog: 79%; Guinea Pig: 79%; Human: 79%; Mouse: 100%; Rabbit: 79%; Rat: 93%
Formulation:	Liquid. Purified antibody supplied in 1x PBS buffer with 0.09% (w/v) sodium azide and 2% sucrose. <i>Note that this product is shipped as lyophilized powder to China customers.</i>
Concentration:	lot specific
Purification:	Affinity Purified
Conjugation:	Unconjugated
Storage:	For short term use, store at 2-8°C up to 1 week. For long term storage, store at -20°C in small aliquots to prevent freeze-thaw cycles.
Stability:	Shelf life: one year from despatch.
Predicted Protein Size:	42kDa
Gene Name:	runt related transcription factor 1
Database Link:	<a href="#">NP_033951</a> <a href="#">Entrez Gene 12394 Mouse</a> <a href="#">Q03347-2</a>



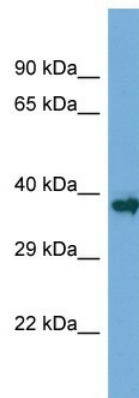
[View online »](#)

**Background:**

CBF binds to the core site, 5'-PYGPGGT-3', of a number of enhancers and promoters, including murine leukemia virus, polyomavirus enhancer, T-cell receptor enhancers, LCK, IL-3 and GM-CSF promoters. Runx1 is essential for the development of normal hematopoiesis. Isoform 4 shows higher binding activities for target genes and binds TCR-beta-E2 and RAG-1 target site with threefold higher affinity than other isoforms. It is less effective in the context of neutrophil terminal differentiation. Runx1 acts synergistically with ELF4 to transactivate the IL-3 promoter and with ELF2 to transactivate the BLK promoter. It inhibits KAT6B-dependent transcriptional activation.

**Synonyms:**

AML1; AMLCR1; CBF-alpha-2; CBFA2; EVI-1; OTTHUMP00000108697; PEBP2A2; PEBP2aB

**Product images:**

Host: Rabbit  
Target Name: Runx1  
Sample Type: Mouse Skeletal Muscle lysates  
Antibody Dilution: 1.0ug/ml