

Product datasheet for **TA355878**

Sp1 Rabbit Polyclonal Antibody

Product data:

Product Type:	Primary Antibodies
Applications:	WB
Reactivity:	Mouse
Host:	Rabbit
Clonality:	Polyclonal
Immunogen:	The immunogen is a synthetic peptide directed towards the middle region of human SP1
Specificity:	Expected reactivity: Cow, Dog, Goat, Guinea Pig, Human, Mouse, Pig, Rabbit, Rat Homology: Cow: 86%; Dog: 86%; Goat: 86%; Guinea Pig: 79%; Human: 79%; Mouse: 100%; Pig: 86%; Rabbit: 79%; Rat: 100%
Formulation:	Liquid. Purified antibody supplied in 1x PBS buffer with 0.09% (w/v) sodium azide and 2% sucrose. <i>Note that this product is shipped as lyophilized powder to China customers.</i>
Concentration:	lot specific
Purification:	Protein A purified
Conjugation:	Unconjugated
Storage:	For short term use, store at 2-8°C up to 1 week. For long term storage, store at -20°C in small aliquots to prevent freeze-thaw cycles.
Stability:	Shelf life: one year from despatch.
Predicted Protein Size:	51kDa
Gene Name:	trans-acting transcription factor 1
Database Link:	Entrez Gene 20683 Mouse O89090-2
Background:	SP1 is a transcription factor binds to GC box
Synonyms:	TSFP1

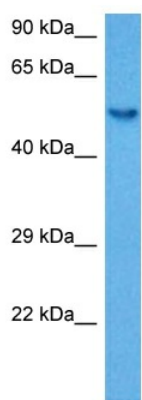


[View online »](#)

Product images:

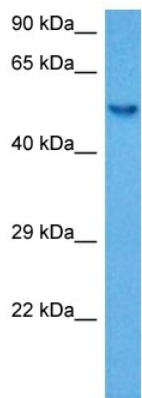


WB Suggested Anti-SP1 Antibody Titration:
 1.25ug/ml
 ELISA Titer: 1:1562500
 Positive Control: SP2/0 cell lysate



Host: Rabbit
 Target Name: Sp1
 Sample Type: Mouse Spleen Lysate
 Antibody Dilution: 1.0ug/ml

Host: Rabbit
 Target Name: SP1
 Sample Tissue: Mouse Spleen
 Antibody Dilution: 1ug/ml



Host: Rabbit
Target Name: Sp1
Sample Type: Mouse Spleen Lysate
Antibody Dilution: 1.0 μ g/ml

Host: Mouse
Target Name: SP1
Sample Tissue: Mouse Spleen
Antibody Dilution: 1 μ g/ml