

Product datasheet for **TA355866**

Apex1 Rabbit Polyclonal Antibody

Product data:

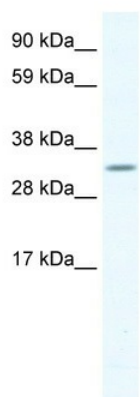
Product Type:	Primary Antibodies
Applications:	WB
Reactivity:	Mouse
Host:	Rabbit
Clonality:	Polyclonal
Immunogen:	The immunogen is a synthetic peptide corresponding to a region of Mouse
Specificity:	Expected reactivity: Cow, Guinea Pig, Horse, Mouse, Rabbit, Rat Homology: Cow: 85%; Guinea Pig: 86%; Horse: 79%; Mouse: 100%; Rabbit: 86%; Rat: 100%
Formulation:	Liquid. Purified antibody supplied in 1x PBS buffer with 0.09% (w/v) sodium azide and 2% sucrose. <i>Note that this product is shipped as lyophilized powder to China customers.</i>
Concentration:	lot specific
Purification:	Protein A purified
Conjugation:	Unconjugated
Storage:	For short term use, store at 2-8°C up to 1 week. For long term storage, store at -20°C in small aliquots to prevent freeze-thaw cycles.
Stability:	Shelf life: one year from despatch.
Predicted Protein Size:	35kDa
Gene Name:	apurinic/aprimidinic endonuclease 1
Database Link:	NP_033817 Entrez Gene 11792 Mouse Q544Z7
Background:	Apurinic/aprimidinic (AP) sites occur frequently in DNA molecules by spontaneous hydrolysis, by DNA damaging agents or by DNA glycosylases that remove specific abnormal bases. AP sites are pre-mutagenic lesions that can prevent normal DNA replication so the cell contains systems to identify and repair such sites. Class II AP endonucleases cleave the phosphodiester backbone 5' to the AP site. This gene encodes the major AP endonuclease in human cells.



[View online »](#)

Synonyms: APE; APE-1; APE1; APEN; APEX; APX; HAP1; REF-1; REF1

Product images:



WB Suggested Anti-APEX1 Antibody Titration:
1.25ug/ml
ELISA Titer: 1:12500
Positive Control: SP2/0 cell lysate