

Product datasheet for **TA355630**

KMT2B Rabbit Polyclonal Antibody

Product data:

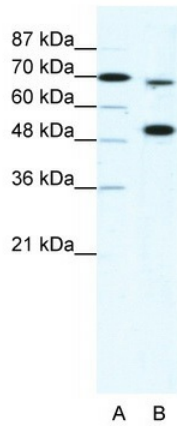
Product Type:	Primary Antibodies
Applications:	WB
Reactivity:	Human
Host:	Rabbit
Clonality:	Polyclonal
Immunogen:	The immunogen is a synthetic peptide directed towards the N terminal region of human MLL4
Specificity:	Expected reactivity: Cow, Dog, Guinea Pig, Horse, Human, Mouse, Rabbit, Rat, Yeast Homology: Cow: 92%; Dog: 85%; Guinea Pig: 92%; Horse: 83%; Human: 100%; Mouse: 92%; Rabbit: 92%; Rat: 92%; Yeast: 91%
Formulation:	Liquid. Purified antibody supplied in 1x PBS buffer with 0.09% (w/v) sodium azide and 2% sucrose. <i>Note that this product is shipped as lyophilized powder to China customers.</i>
Concentration:	lot specific
Purification:	Protein A purified
Conjugation:	Unconjugated
Storage:	For short term use, store at 2-8°C up to 1 week. For long term storage, store at -20°C in small aliquots to prevent freeze-thaw cycles.
Stability:	Shelf life: one year from despatch.
Predicted Protein Size:	64kDa
Gene Name:	lysine methyltransferase 2B
Database Link:	Entrez Gene 9757 Human Q9UMN6-2
Background:	MLL4 a protein which contains multiple domains including a CXXC zinc finger, three PHD zinc fingers, two FY-rich domains, and a SET (suppressor of variegation, enhancer of zeste, and trithorax) domain. The SET domain is a conserved C-terminal domain that characterizes proteins of the MLL (mixed-lineage leukemia) family. MLL4 is ubiquitously expressed in adult tissues. It is also amplified in solid tumor cell lines, and may be involved in human cancer



[View online >](#)

Synonyms: HRX2; MLL1B; MLL2; MLL4; TRX2; WBP7

Product images:



WB Suggested Anti-MLL4 Antibody Titration: 5ug/ml
 Positive Control: HepG2 cell lysate
 KMT2B is strongly supported by BioGPS gene expression data to be expressed in Human HepG2 cells



Host: Rabbit
 Target Name: MLL4
 Sample Type: THP-1 Cell Lysate
 Antibody Dilution: 1.0µg/ml

Host: Rabbit
 Target Name: MLL4
 Sample Tissue: Human THP-1 Whole Cell
 Antibody Dilution: 1 ug/ml