

Product datasheet for **TA355570**

Prohibitin (PHB) Rabbit Polyclonal Antibody

Product data:

Product Type:	Primary Antibodies
Applications:	IHC, WB
Reactivity:	Human
Host:	Rabbit
Clonality:	Polyclonal
Immunogen:	The immunogen is a synthetic peptide directed towards the C terminal region of human PHB
Specificity:	Expected reactivity: Cow, Dog, Guinea Pig, Horse, Human, Mouse, Rabbit, Rat, Zebrafish Homology: Cow: 100%; Dog: 100%; Guinea Pig: 100%; Horse: 100%; Human: 100%; Mouse: 100%; Rabbit: 100%; Rat: 100%; Zebrafish: 86%
Formulation:	Liquid. Purified antibody supplied in 1x PBS buffer with 0.09% (w/v) sodium azide and 2% sucrose. <i>Note that this product is shipped as lyophilized powder to China customers.</i>
Concentration:	lot specific
Purification:	Affinity Purified
Conjugation:	Unconjugated
Storage:	For short term use, store at 2-8°C up to 1 week. For long term storage, store at -20°C in small aliquots to prevent freeze-thaw cycles.
Stability:	Shelf life: one year from despatch.
Predicted Protein Size:	30kDa
Gene Name:	prohibitin
Database Link:	NP_002625 Entrez Gene 5245 Human P35232



[View online »](#)

Background:

Prohibitin is from an evolutionarily conserved gene that is ubiquitously expressed. It is thought to be a negative regulator of cell proliferation and may be a tumor suppressor. Mutations in PHB have been linked to sporadic breast cancer. Prohibitin is expressed as two transcripts with varying lengths of 3' untranslated region. The longer transcript is present at higher levels in proliferating tissues and cells, suggesting that this longer 3' untranslated region may function as a trans-acting regulatory RNA.

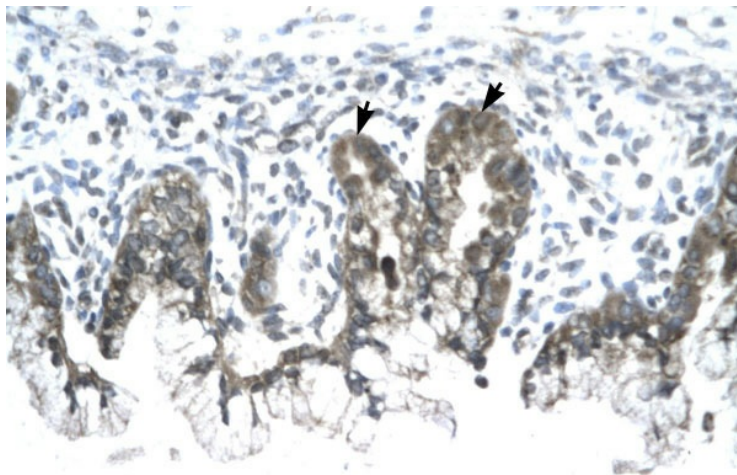
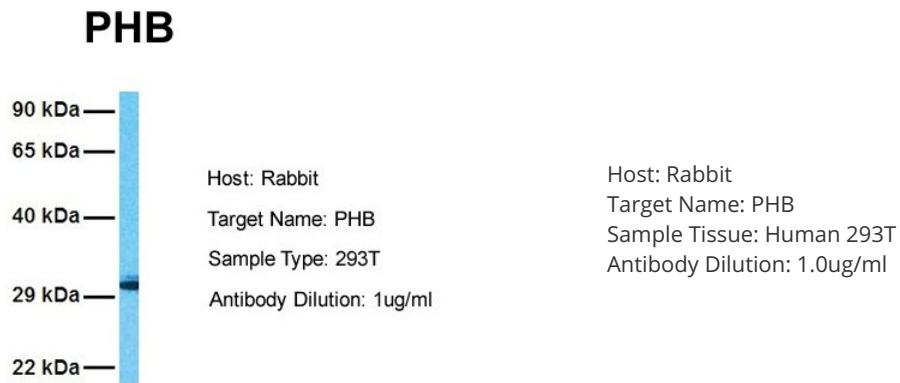
Synonyms:

PHB1; prohibitin

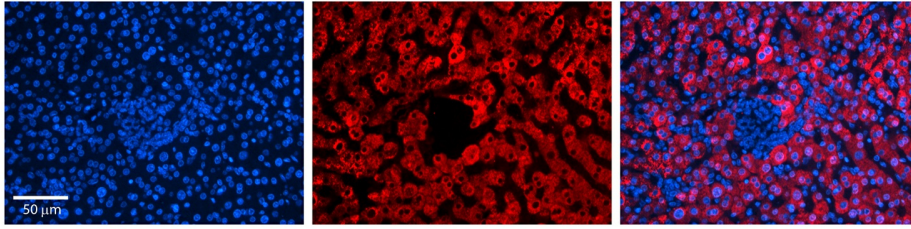
Protein Families:

Druggable Genome, Stem cell - Pluripotency, Transcription Factors

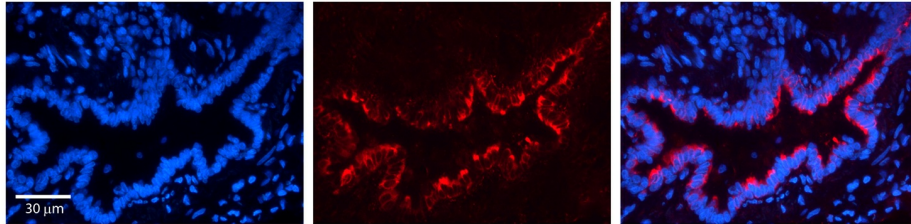
Product images:



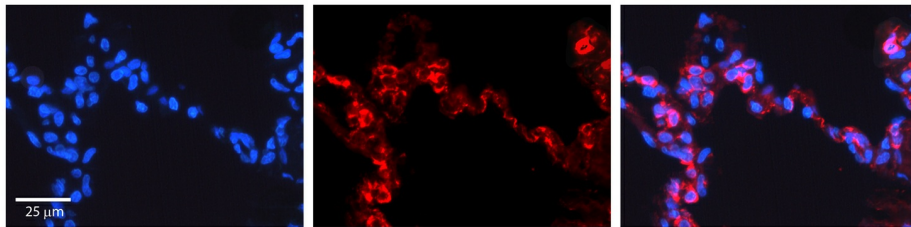
Human Stomach



PHB antibody - C-terminal region (TA355570)
 Catalog Number: TA355570
 Formalin Fixed Paraffin Embedded Tissue:
 Human Liver Tissue
 Observed Staining: Cytoplasm in hepatocytes
 Primary Antibody Concentration: 1:600
 Secondary Antibody: Donkey anti-Rabbit-Cy3
 Secondary Antibody Concentration: 1:200
 Magnification: 20X
 Exposure Time: 0.5–2.0 sec



PHB antibody - C-terminal region (TA355570)
 Catalog Number: TA355570
 Formalin Fixed Paraffin Embedded Tissue:
 Human Bronchial Epithelial Tissue
 Observed Staining: Cytoplasm in Human
 Bronchial Epithelial Tissue
 Primary Antibody Concentration: 1:600
 Secondary Antibody: Donkey anti-Rabbit-Cy3
 Secondary Antibody Concentration: 1:200
 Magnification: 20X
 Exposure Time: 0.5–2.0 sec



PHB antibody - C-terminal region (TA355570)
 Catalog Number: TA355570
 Formalin Fixed Paraffin Embedded Tissue:
 Human Lung Tissue
 Observed Staining: Cytoplasm of pneumocytes
 Primary Antibody Concentration: 1:600
 Secondary Antibody: Donkey anti-Rabbit-Cy3
 Secondary Antibody Concentration: 1:200
 Magnification: 20X
 Exposure Time: 0.5–2.0 sec