

Product datasheet for **TA355342**

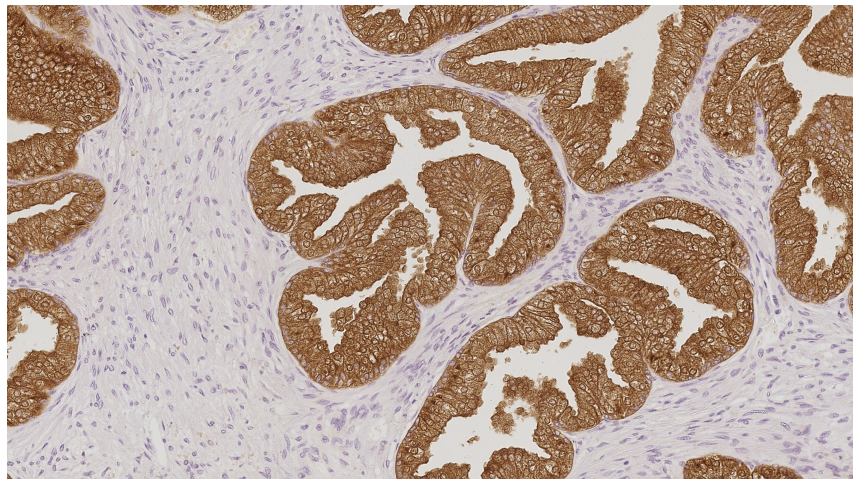
Prostate Specific Antigen (KLK3) Mouse Monoclonal Antibody [Clone ID: 35H9]

Product data:

Product Type:	Primary Antibodies
Clone Name:	35H9
Applications:	IHC
Recommended Dilution:	1:100
Reactivity:	Human
Host:	Mouse
Isotype:	IgG1
Clonality:	Monoclonal
Immunogen:	Prokaryotic recombinant protein corresponding to a portion of the N-terminus of the prostate specific antigen molecule
Specificity:	Human prostate specific antigen
Formulation:	Liquid tissue culture supernatant containing sodium azide as a preservative
Conjugation:	Unconjugated
Storage:	Store at 2-8°C
Stability:	12 months
Gene Name:	kallikrein related peptidase 3
Database Link:	Entrez Gene 354 Human P07288
Background:	Prostate specific antigen (PSA) is a 34 kD protein belonging to the kallikrein family of serine proteases and was originally isolated and purified from human seminal plasma. It was found to be immunologically identical and biologically similar to a protein isolated from the prostate gland. PSA is distinct from prostatic acid phosphatase. Low levels of expression of PSA have been reported in non-prostatic tissues and tumors such as breast carcinomas.
Synonyms:	APS; gamma-seminoprotein; hK3; Kallikrein-3; KLK2A1; PSA; Semenogelase; Seminin



[View online »](#)

Product images:

Human prostatic hyperplasia:
immunohistochemical staining of Prostate
Specific Antigen. Prostate Specific Antigen: clone
35H9