

Product datasheet for **TA355308**

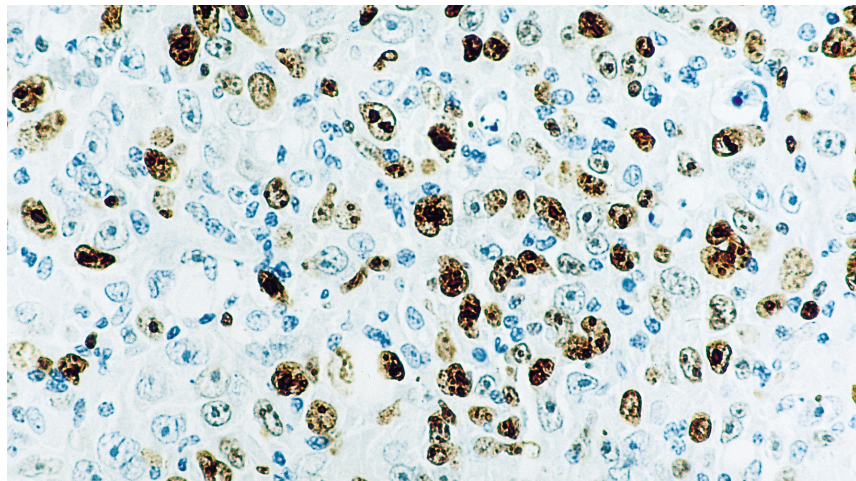
Ki67 (MKI67) Mouse Monoclonal Antibody [Clone ID: MM1]

Product data:

Product Type:	Primary Antibodies
Clone Name:	MM1
Applications:	IHC
Recommended Dilution:	1:200
Reactivity:	Human
Host:	Mouse
Isotype:	IgG1
Clonality:	Monoclonal
Immunogen:	Prokaryotic recombinant fusion protein corresponding to a 1086 bp Ki67 motif-containing cDNA fragment.
Specificity:	Human Ki67 nuclear antigen expressed in all proliferating cells during late G1, S, M and G2 phases of the cell cycle
Formulation:	Liquid tissue culture supernatant containing sodium azide as a preservative
Conjugation:	Unconjugated
Storage:	Store at 2-8°C
Stability:	12 months
Gene Name:	marker of proliferation Ki-67
Database Link:	Entrez Gene 4288 Human P46013
Background:	The Ki67 antigen is a nuclear protein which is expressed in all active parts of the cell cycle (G1, S, G2 and mitosis) but is absent in resting cells (G0). In contrast to many other cell cycle-associated proteins, the Ki67 antigen is consistently absent in quiescent cells and is not detectable during DNA repair processes. Thus, the presence of Ki67 antigen is strictly associated with the cell cycle and confined to the nucleus, suggesting an important role in the maintenance and/or regulation of the cell division cycle.
Synonyms:	KI67; KIA



[View online »](#)

Product images:

Diffuse large B cell lymphoma:
immunohistochemical staining for Ki67. Ki67:
clone MM1