

Product datasheet for **TA355295**

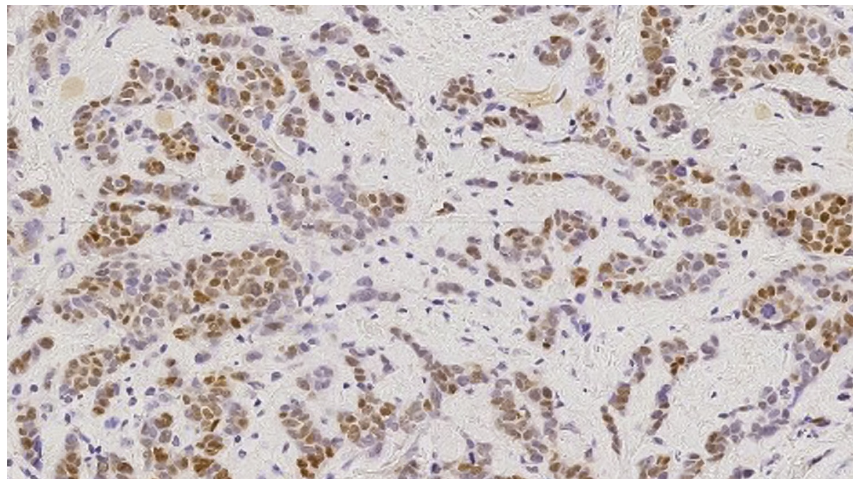
Estrogen Receptor 1 (ESR1) Mouse Monoclonal Antibody [Clone ID: 6F11]

Product data:

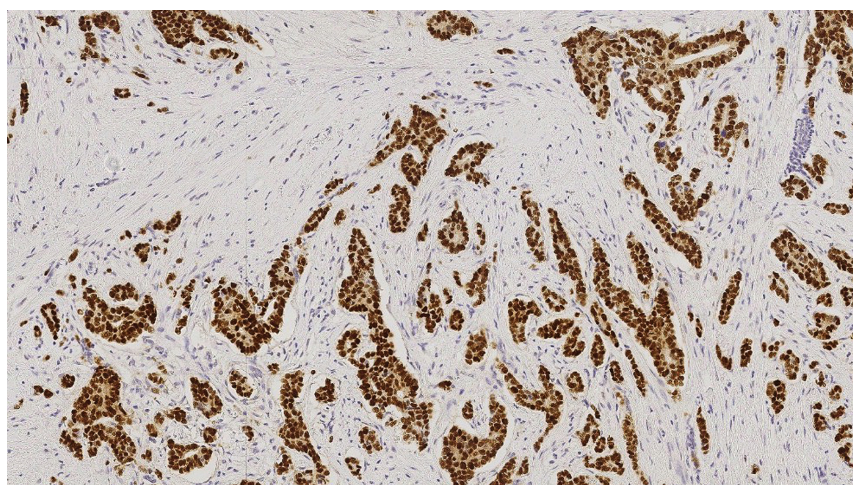
Product Type:	Primary Antibodies
Clone Name:	6F11
Applications:	IHC
Recommended Dilution:	1:50
Reactivity:	Human
Host:	Mouse
Isotype:	IgG1
Clonality:	Monoclonal
Immunogen:	Prokaryotic recombinant protein corresponding to the full length alpha form of the human estrogen receptor molecule.
Specificity:	Human estrogen receptor
Formulation:	Liquid tissue culture supernatant containing sodium azide as a preservative
Conjugation:	Unconjugated
Storage:	Store at 2-8°C
Stability:	12 months
Gene Name:	estrogen receptor 1
Database Link:	Entrez Gene 2099 Human P03372
Background:	Estrogen receptor (ER) content of breast cancer tissue is an important parameter in the prediction of prognosis and response to endocrine therapy. The introduction of highly specific monoclonal antibodies to ER has allowed the determination of receptor status of breast tumors to be carried out in routine histopathology laboratories.
Synonyms:	DKFZp686N23123; ER; ER-alpha; Era; ESR; ESRA; NR3A1



[View online »](#)

Product images:

Left: Invasive ductal carcinoma (high expressor): intense nuclear staining in nearly 100% of tumor cells. Right: Invasive ductal carcinoma (moderate expressor): immunohistochemical staining for estrogen receptor. Estrogen Receptor: clone 6F11



Left: Invasive ductal carcinoma (high expressor): intense nuclear staining in nearly 100% of tumor cells. Right: Invasive ductal carcinoma (moderate expressor): immunohistochemical staining for estrogen receptor. Estrogen Receptor: clone 6F11