

Product datasheet for **TA355225**

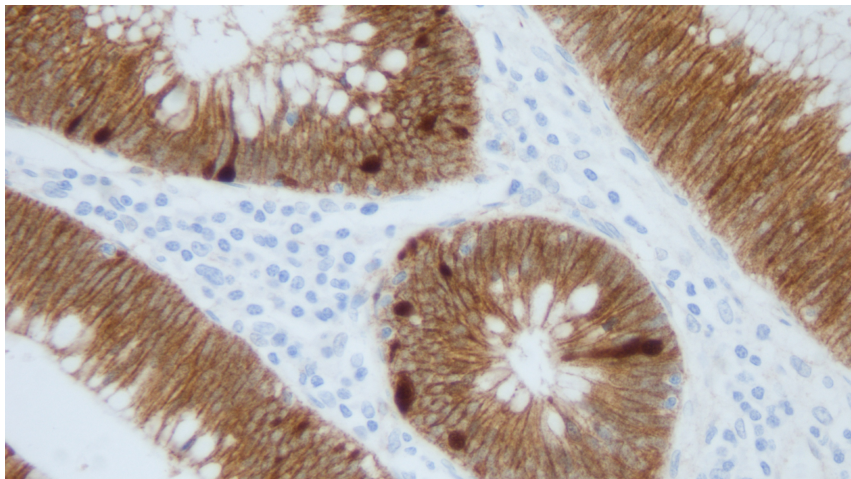
beta Catenin (CTNNB1) Mouse Monoclonal Antibody [Clone ID: 17C2]

Product data:

Product Type:	Primary Antibodies
Clone Name:	17C2
Applications:	IHC
Recommended Dilution:	1:150
Reactivity:	Human
Host:	Mouse
Isotype:	IgG2a
Clonality:	Monoclonal
Immunogen:	Prokaryotic recombinant protein corresponding to a 160 amino acid region of the C-terminus of the beta-catenin molecule
Specificity:	Human beta-catenin
Formulation:	Liquid tissue culture supernatant containing sodium azide as a preservative
Conjugation:	Unconjugated
Storage:	Store at 2-8°C
Stability:	12 months
Gene Name:	catenin beta 1
Database Link:	Entrez Gene 1499 Human P35222
Background:	<p>The catenins, (alpha, beta and gamma) are cytoplasmic proteins which bind to the highly conserved tail of the E-cadherin molecule. Beta-catenin is a component of the adherens junction, a multiprotein complex which supports Ca²⁺ -dependent cell-to-cell contact, which in itself is critical for adhesion, signal transmission and for anchoring the actin cytoskeleton. Beta-catenin's role is as a transcription effector of the wnt-signaling pathway. Immunohistochemistry is the best way to demonstrate nuclear expression of beta-catenin and wnt-pathway activation. This aberrant expression is observed in human tumorigenesis, and especially in colorectal cancer.</p>
Synonyms:	beta-catenin; CTNNB; DKFZp686D02253; FLJ25606; FLJ37923; OTTHUMP00000209288



[View online »](#)

Product images:

Human colon polyp: immunohistochemical staining for Beta-Catenin. Note the abnormal translocation of the protein to the nucleus. Beta-Catenin: clone 17C2