

Product datasheet for **TA355036**

beta Actin (ACTB) Rabbit Polyclonal Antibody

Product data:

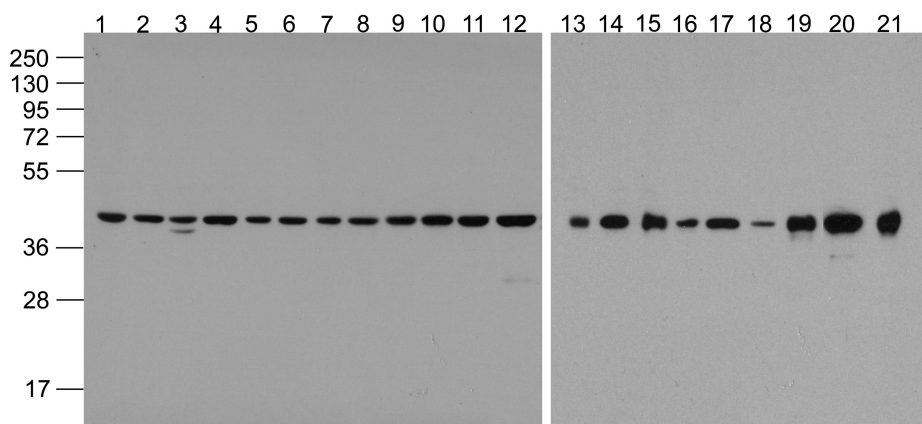
Product Type:	Primary Antibodies
Applications:	WB
Recommended Dilution:	WB: 0.5-1 μ /ml.
Reactivity:	Human, Mouse, Rat, Rabbit, Chicken, Drosophila
Host:	Rabbit
Isotype:	IgG
Clonality:	Polyclonal
Immunogen:	HRP-Beta-Actin antibody was raised against a synthetic peptide containing 16 amino acids near the amino terminus of beta-actin.
Formulation:	HRP-Beta-Actin antibody is supplied in PBS containing 0.02% sodium azide.
Concentration:	1 mg/ml
Purification:	HRP-Beta-Actin antibody is affinity chromatography purified via peptide column.
Conjugation:	Unconjugated
Storage:	Store at -20°C as received.
Stability:	Stable for 12 months from date of receipt.
Predicted Protein Size:	Predicted: 42 kDa; Observed: 42 kDa
Gene Name:	actin, beta
Database Link:	AAH02409 Entrez Gene 60 Human P60709
Background:	Actins are highly conserved proteins that are involved in cell motility, structure and integrity, processes that are crucial for tissue development and the development of organism. The actin cytoskeleton is one of the principal drivers of cell motility and is capable of responding to complex signaling cascades. Recent evidence suggests that it may play key roles in regulating apoptosis and aging. Beta actin is one of six different actin isoforms which have been identified. Like GAPDH, beta-Actin is constitutively expressed at high levels in almost all tissues and cell lines making it ideal for use as a loading control marker in immunoblots.
Synonyms:	Beta-actin; PS1TP5BP1



[View online »](#)

Note: HRP-Beta-Actin antibody can be used for detection of Beta-Actin by Western blot at 0.5 - 1 μ /ml.

Product images:



Western blot analysis of beta-Actin (HRP) in 293, A431, A549, Daudi, HeLa, HepG2, Jurkat, K562, MOLT4, 3T3, Raji, THP-1, mouse brain, rat brain, rabbit brain, mouse lung, rat lung, rat liver, rabbit spleen, chicken small intestine, and drosophila lysate with beta-Actin Antibody (HRP) at 1ug/mL.