

Product datasheet for **TA355033**

B7-2 (CD86) Rabbit Polyclonal Antibody

Product data:

Product Type:	Primary Antibodies
Applications:	IF, IHC, WB
Recommended Dilution:	WB: 1-2µg/mL. IHC: 2µg/mL. Immunofluorescence start at 20µg/mL.
Reactivity:	Human
Host:	Rabbit
Isotype:	IgG
Clonality:	Polyclonal
Immunogen:	CD86 antibody was raised against a peptide corresponding to 17 amino acids near the center of human CD86. The immunogen is located within amino acids 160 - 210 of CD86.
Formulation:	CD86 Antibody is supplied in PBS containing 0.02% sodium azide.
Concentration:	1 mg/ml
Purification:	CD86 Antibody is affinity chromatography purified via peptide column.
Conjugation:	Unconjugated
Storage:	Store at -20°C as received.
Stability:	Stable for 12 months from date of receipt.
Predicted Protein Size:	Predicted: 36 kDa; Observed: 68 kDa
Gene Name:	CD86 molecule
Database Link:	NP_787058 Entrez Gene 942 Human P42082



[View online »](#)

Background:

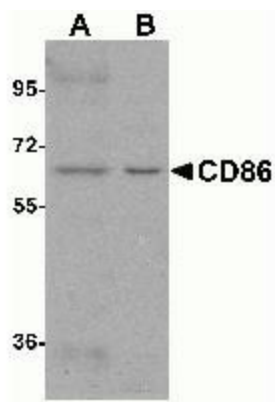
CD86, also known as B7-2, is a type I membrane protein that is a member of the immunoglobulin superfamily. Like the related protein CD80, this protein is expressed by antigen-presenting cells, and is the ligand for two proteins at the cell surface of T cells, CD28 and the cytotoxic T-lymphocyte-associated protein 4 (CTLA-4). Binding of this protein with CD28 antigen is a costimulatory signal for activation of the T-cell and induces T-cell proliferation and cytokine production. CTLA-4 binding negatively regulates T-cell activation and diminishes the immune response (1). Blocking the CTLA-4-CD80/CD86 interaction has been shown to enhance T-cell functions in acute lymphoblastic leukemia (ALL), suggesting that this pathway may be an attractive target for future cancer immunotherapy (2).

Synonyms:

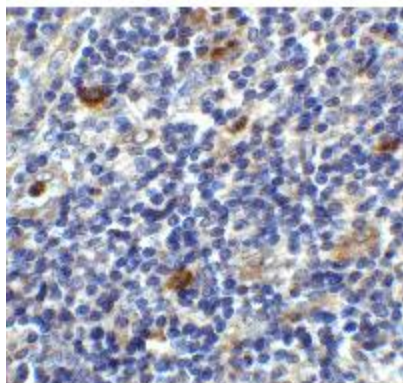
B7-2; B70; BU63; CD28LG2; FUN-1; LAB72; MGC34413

Note:

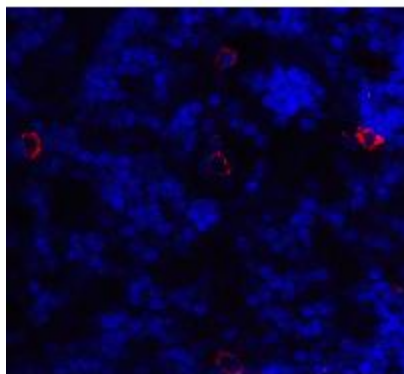
CD86 antibody can be used for Western blot at 1 - 2 $\mu\text{g}/\text{mL}$. Antibody can also be used for Immunohistochemistry at 2 $\mu\text{g}/\text{mL}$. For Immunofluorescence start at 20 $\mu\text{g}/\text{mL}$.

Product images:

Western blot analysis of CD86 in (A) Daudi and (B) Raji cell lysate with CD86 antibody at 1 $\mu\text{g}/\text{ml}$.



Immunohistochemistry of CD86 in human lymph node tissue with CD86 antibody at 2 $\mu\text{g}/\text{ml}$.



Immunofluorescence of CD86 in human lymph node tissue with CD86 antibody at 20ug/ml.