

Product datasheet for **TA355032**

B7-1 (CD80) Rabbit Polyclonal Antibody

Product data:

| | |
|-------------------------|---|
| Product Type: | Primary Antibodies |
| Applications: | IF, IHC, WB |
| Recommended Dilution: | WB: 1-2µg/mL.IHC: 2µg/mL. Immunoflorescence start at 20µg/mL. |
| Reactivity: | Human, Mouse |
| Host: | Rabbit |
| Isotype: | IgG |
| Clonality: | Polyclonal |
| Immunogen: | CD80 antibody was raised against a peptide corresponding to 17 amino acids near the amino terminus of human CD80. The immunogen is located within amino acids 60 - 110 of CD80. |
| Formulation: | CD80 Antibody is supplied in PBS containing 0.02% sodium azide. |
| Concentration: | 1 mg/ml |
| Purification: | CD80 Antibody is affinity chromatography purified via peptide column. |
| Conjugation: | Unconjugated |
| Storage: | Store at -20°C as received. |
| Stability: | Stable for 12 months from date of receipt. |
| Predicted Protein Size: | Predicted: 32 kDa; Observed: 50 kDa |
| Gene Name: | CD80 molecule |
| Database Link: | NP_005182 Entrez Gene 941 Human P33681 |



[View online »](#)

Background:

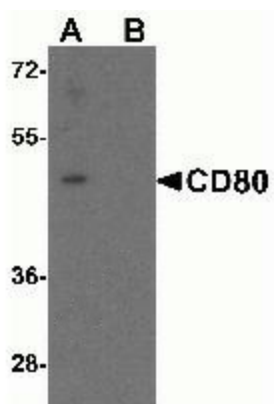
CD80, also known as B7-1, is a type I membrane protein that is a member of the immunoglobulin superfamily. Like the related protein CD86, this protein is expressed by antigen-presenting cells, and is the ligand for two proteins at the cell surface of T cells, CD28 and the cytotoxic T-lymphocyte-associated protein 4 (CTLA-4). Binding of this protein with CD28 antigen is a costimulatory signal for activation of the T-cell and induces T-cell proliferation and cytokine production. CTLA-4 binding negatively regulates T-cell activation and diminishes the immune response (1). Blocking the CTLA-4-CD80/CD86 interaction has been shown to enhance T-cell functions in acute lymphoblastic leukemia (ALL), suggesting that this pathway may be an attractive target for future cancer immunotherapy (2).

Synonyms:

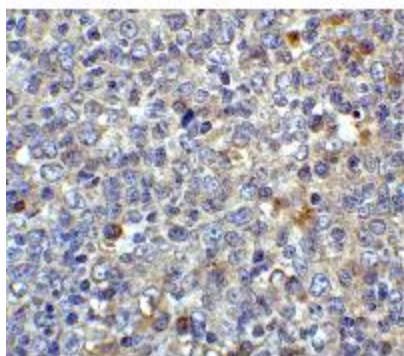
B7; BB1; CD28LG; CD28LG1; LAB7

Note:

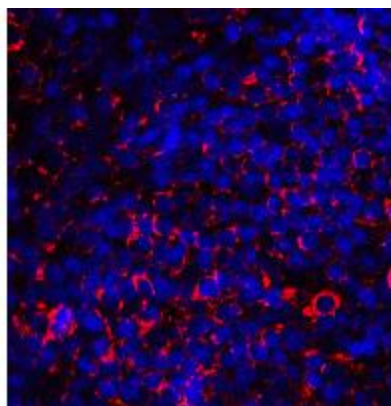
CD80 antibody can be used for Western blot at 1 - 2 $\mu\text{g}/\text{mL}$. Antibody can also be used for Immunohistochemistry at 2 $\mu\text{g}/\text{mL}$. For Immunofluorescence start at 20 $\mu\text{g}/\text{mL}$.

Product images:

Western blot analysis of CD80 in EL4 cell lysate with CD80 antibody at 1 $\mu\text{g}/\text{ml}$ in (A) the absence and (B) the presence of blocking peptide.



Immunohistochemistry of CD80 in human tonsil tissue with CD80 antibody at 2 $\mu\text{g}/\text{ml}$.



Immunofluorescence of CD80 in human tonsil tissue with CD80 antibody at 20ug/ml.