

## Product datasheet for **TA354405**

### MMP1 Rabbit Polyclonal Antibody

#### Product data:

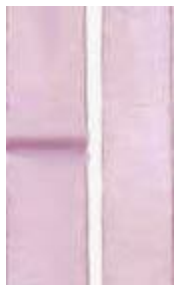
Product Type:	Primary Antibodies
Applications:	IHC, WB
Recommended Dilution:	WB 0.1-1 µg/ml ELISA 0.01-0.1 µg/ml IP 2-5 µg/ml IHC 2-10 µg/ml FC 5-10 µg/ml
Reactivity:	Human
Host:	Rabbit
Isotype:	IgG
Clonality:	Polyclonal
Immunogen:	A synthetic peptide corresponding to N-term of human MMP-1.
Formulation:	This affinity purified antibody is supplied in sterile Phosphate buffered saline (pH7.2) containing antibody stabilizer.
Purification:	The Rabbit IgG is purified by Epitope Affinity Purification
Conjugation:	Unconjugated
Storage:	Store at -20°C as received.
Stability:	Stable for 12 months from date of receipt.
Gene Name:	matrix metalloproteinase 1
Database Link:	<a href="#">NP_001139410</a> <a href="#">Entrez Gene 4312 Human P03956</a>
Background:	The matrix metalloproteinase (MMP) are proteolytic enzymes involved in the breakdown of extracellular matrix in normal physiological processes, such as embryonic development, reproduction, and tissue remodeling, as well as in disease processes, such as arthritis and metastasis. Most MMP's are secreted as inactive proproteins which are activated when cleaved by extracellular proteinases. Imbalanced secretion of certain MMP or disturbances in the differential control of MMP by tissue inhibitor of MMPs (TIMPs) are implicated in the invasive potential of malignant tumors. MMP1 is involved in breaking down the interstitial collagens, types I, II, and III.
Synonyms:	CLG; CLGN
Protein Families:	Druggable Genome, Protease, Secreted Protein



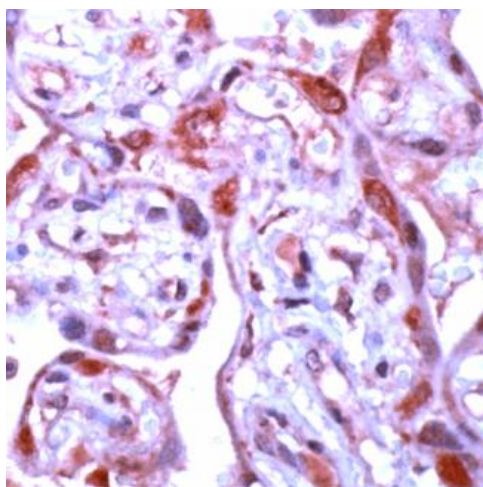
[View online »](#)

Protein Pathways: Bladder cancer, Pathways in cancer, PPAR signaling pathway

### Product images:



WB: The cell lysate derived from PMA-stimulated A431 was resolved onto 10% SDS-PAGE, transferred onto NC membrane, and immunoprobed by Rabbit anti-MMP-1 antibody at 1:500. An immunoreactive band is observed. This band is abolished by pre-incubation with immunizing peptide (2).



Human placenta stained with Anti-MMP-1 antibody, at 1:100 for 10 min at RT. Staining of formalin-fixed tissue requires boiling tissue sections in 10 mM Citrate Buffer, pH 6.0 for 10 min followed by cooling at RT for 20 min.