

Product datasheet for **TA354393**

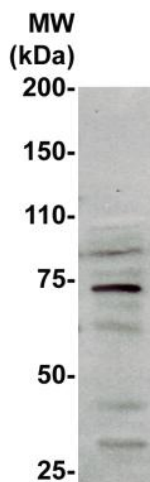
HSF1 Rat Monoclonal Antibody [Clone ID: SPM401]

Product data:

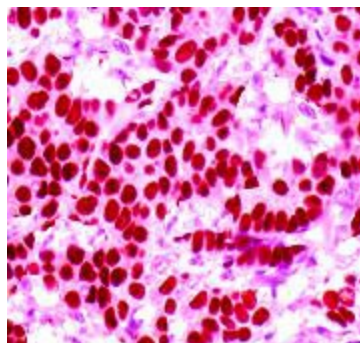
Product Type:	Primary Antibodies
Clone Name:	SPM401
Applications:	IHC, WB
Recommended Dilution:	WB 0.1-1 µg/ml ELISA 0.01-0.1 µg/ml IP 2-5 µg/ml IHC 2-10 µg/ml FC 5-10 µg/ml
Reactivity:	Human, Mouse, Rat
Host:	Rat
Isotype:	IgG1
Clonality:	Monoclonal
Formulation:	This affinity purified antibody is supplied in sterile Phosphate buffered saline (pH7.2) containing antibody stabilizer.
Purification:	The mouse IgG is purified by Protein A-Affinity Chromatography according to Isotyping
Conjugation:	Unconjugated
Storage:	Store at -20°C as received.
Stability:	Stable for 12 months from date of receipt.
Gene Name:	heat shock transcription factor 1
Database Link:	NP_005517 Entrez Gene 15499 Mouse Entrez Gene 79245 Rat Entrez Gene 3297 Human Q00613
Synonyms:	HSTF1
Protein Families:	Transcription Factors



[View online »](#)

Product images:

WB: The cell lysate was derived from MCF7 was resolved onto 7.5% SDSPAGE, transferred onto NC membrane, and immunoprobed by Rat anti-HSF1 antibody (at 1:500 dilution). A major immunoreactive band is observed around 70kDa.



IHC: Human breast carcinoma tissue stained with Rat anti-HSF1 antibody, at 1:100 for 10 min at RT. Staining of formalin-fixed tissue requires boiling tissue sections in 10 mM Citrate Buffer, pH 6.0 for 10 min followed by cooling at RT for 20 min.