

Product datasheet for **TA354278**

MMP2 Rabbit Polyclonal Antibody

Product data:

Product Type:	Primary Antibodies
Applications:	IHC, WB
Recommended Dilution:	WB 0.1-1 µg/ml ELISA 0.01-0.1 µg/ml IP 2-5 µg/ml IHC 2-10 µg/ml FC 5-10 µg/ml
Reactivity:	Human
Host:	Rabbit
Isotype:	IgG
Clonality:	Polyclonal
Immunogen:	A synthetic peptide corresponding to C-term of human MMP2. This sequence is identical among human, rat, mouse, chicken, dog and bovine.
Formulation:	This affinity purified antibody is supplied in sterile Phosphate buffered saline (pH7.2) containing antibody stabilizer.
Purification:	The Rabbit IgG is purified by Epitope Affinity Purification
Conjugation:	Unconjugated
Storage:	Store at -20°C as received.
Stability:	Stable for 12 months from date of receipt.
Predicted Protein Size:	62 kDa, 72 kDa
Gene Name:	matrix metalloproteinase 2
Database Link:	NP_001121363 Entrez Gene 4313 Human P08253



[View online »](#)

Background:

Matrix metalloproteinases (MMPs) belong to a family of proteinases that target many extracellular matrix proteins including additional proteinases, growth factors, cell surface receptors and adhesion molecules. MMPs contain common domain structures that include a signal sequence, a propeptide, a catalytic domain, and a hemopexin-like (Hpx) domain. The MMP activity requires proteolytic cleavage of MMPs in order to generate active MMPs by release of the inhibitory propeptide domain from the whole molecules. MMP-2, MMP-3, MMP-7, MMP-9 and MMP-13 have been characterized as important factors for normal tissue remodeling during embryo development and wound healing, tumor invasion, angiogenesis, carcinogenesis and apoptosis. MMP activities are correlated with cancer metastatic process.

Synonyms:

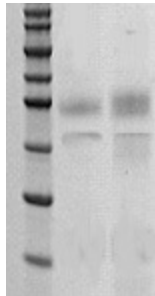
CLG4; CLG4A; MMP-2; MMP-II; MONA; TBE-1

Protein Families:

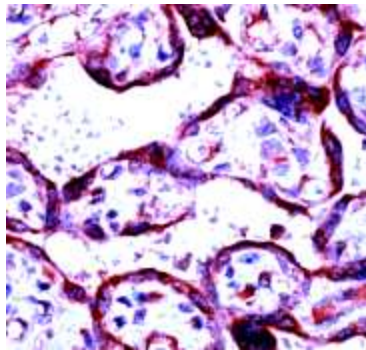
Druggable Genome, Protease

Protein Pathways:

Bladder cancer, GnRH signaling pathway, Leukocyte transendothelial migration, Pathways in cancer

Product images:

WB: The protein derived from the LOVO whole cell lysate (lane 1) or the concentrated serum free culture medium of LOVO were resolved onto 10% SDS-PAGE, transferred to NC membrane, followed by an immunoblotting with Rabbit anti-MMP-2 antibody at 1:1000.



IHC: Human placenta stained with Anti-MMP-2 antibody, at 1:100 for 10 min at RT. Staining of formalin-fixed tissue requires boiling tissue sections in 10 mM Citrate Buffer, pH 6.0 for 10 min followed by cooling at RT for 20 min.