

## Product datasheet for **TA352009**

### COX4 (COX4I1) Rabbit Polyclonal Antibody

#### Product data:

Product Type:	Primary Antibodies
Applications:	IHC, WB
Recommended Dilution:	WB: 500-2000 WB positive control: 293T,Hela and NIH/3T3 cell lysates IHC: 10-50 Positive control: Human esophagus cancer Predicted cell location: Cytoplasm
Reactivity:	Human, Mouse
Host:	Rabbit
Isotype:	IgG
Clonality:	Polyclonal
Immunogen:	Synthetic peptide of human COX4I1
Formulation:	pH7.4 PBS, 0.05% NaN <sub>3</sub> , 40% Glycerol
Concentration:	lot specific
Purification:	Antigen affinity purification
Conjugation:	Unconjugated
Storage:	Store at -20°C as received.
Stability:	Stable for 12 months from date of receipt.
Gene Name:	cytochrome c oxidase subunit 4I1
Database Link:	<a href="#">NP_001852</a> <a href="#">Entrez Gene 12857 Mouse</a> <a href="#">Entrez Gene 1327 Human</a> <a href="#">P13073</a>



[View online »](#)

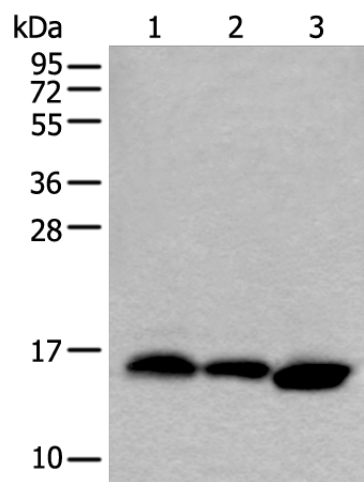
**Background:** Cytochrome c oxidase (COX) is the terminal enzyme of the mitochondrial respiratory chain. It is a multi-subunit enzyme complex that couples the transfer of electrons from cytochrome c to molecular oxygen and contributes to a proton electrochemical gradient across the inner mitochondrial membrane. The complex consists of 13 mitochondrial- and nuclear-encoded subunits. The mitochondrially-encoded subunits perform the electron transfer and proton pumping activities. The functions of the nuclear-encoded subunits are unknown but they may play a role in the regulation and assembly of the complex. This gene encodes the nuclear-encoded subunit IV isoform 1 of the human mitochondrial respiratory chain enzyme. It is located at the 3' of the NOC4 (neighbor of COX4) gene in a head-to-head orientation, and shares a promoter with it.

**Synonyms:** COX4; COX4-1; COXIV; COX IV-1; COXIV-1

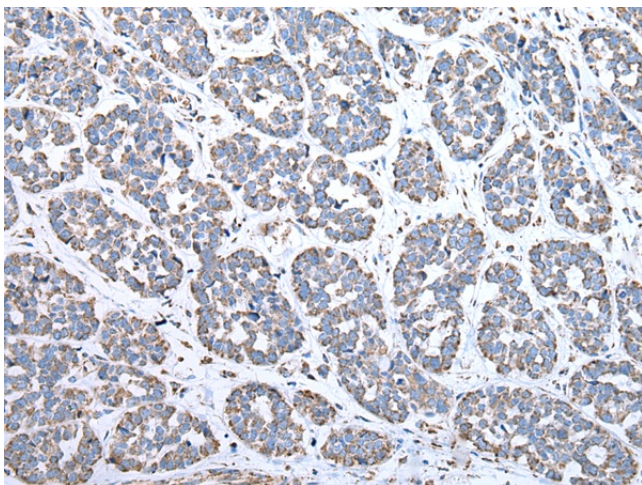
**Protein Families:** Transmembrane

**Protein Pathways:** Alzheimer's disease, Cardiac muscle contraction, Huntington's disease, Metabolic pathways, Oxidative phosphorylation, Parkinson's disease

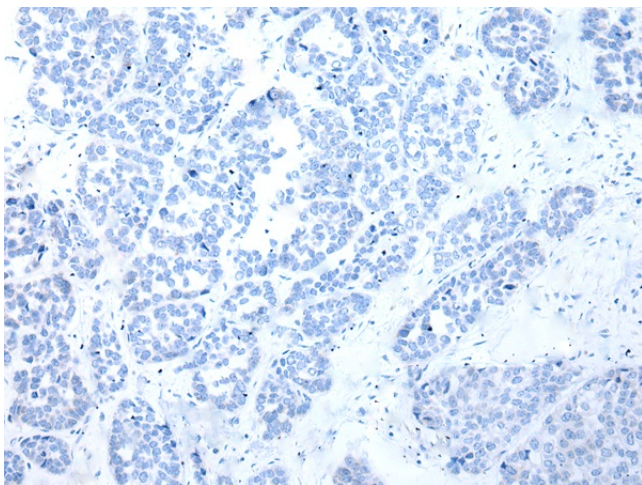
### Product images:



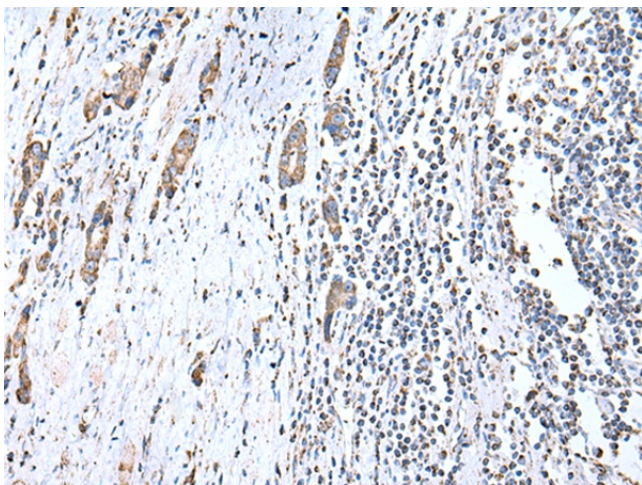
Gel: 12%SDS-PAGE  
Lysate: 40 µg  
Lane 1-3: 293T  
Hela and NIH/3T3 cell lysates  
Primary antibody: TA352009 (COX4I1 Antibody) at dilution 1/350  
Secondary antibody: Goat anti rabbit IgG at 1/8000 dilution  
Exposure time: 3 seconds



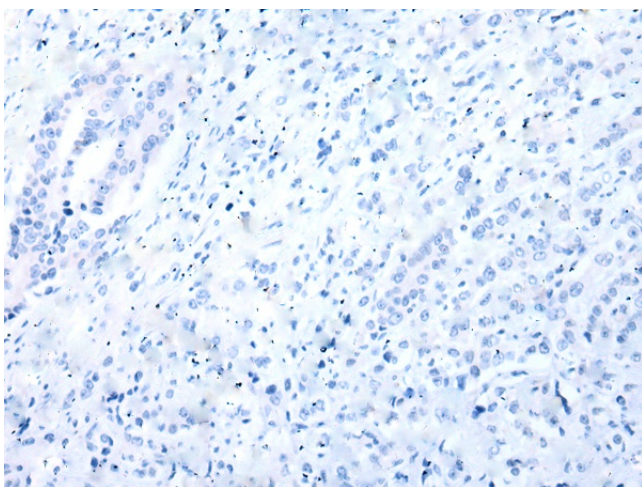
Immunohistochemistry of paraffin-embedded Human esophagus cancer tissue using TA352009 (COX4I1 Antibody) at dilution 1/25 (Original magnification:  $\times 200$ )



Immunohistochemistry of paraffin-embedded Human esophagus cancer tissue using TA352009 (COX4I1 Antibody) at dilution 1/25, treated with synthetic peptide. (Original magnification:  $\times 200$ )



Immunohistochemistry of paraffin-embedded Human prostate cancer tissue using TA352009 (COX4I1 Antibody) at dilution 1/25 (Original magnification:  $\times 200$ )



Immunohistochemistry of paraffin-embedded Human prostate cancer tissue using TA352009 (COX4I1 Antibody) at dilution 1/25, treated with synthetic peptide. (Original magnification:  $\times 200$ )