

## Product datasheet for **TA351992**

### Aquaporin 7 (AQP7) Rabbit Polyclonal Antibody

#### Product data:

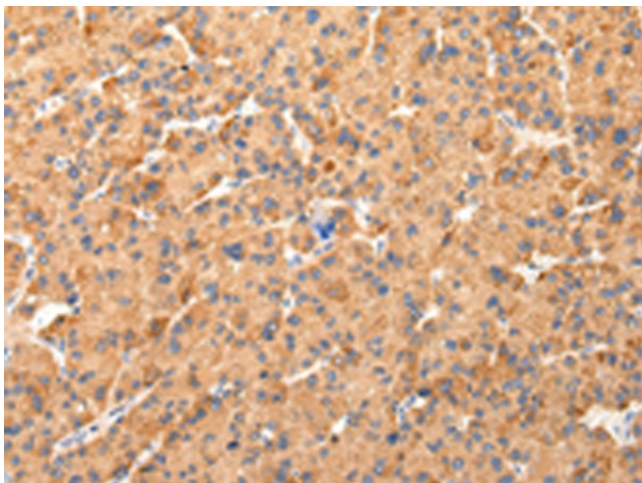
Product Type:	Primary Antibodies
Applications:	IHC
Recommended Dilution:	IHC: 30-150 Positive control: Human liver cancer Predicted cell location: Cytoplasm
Reactivity:	Human
Host:	Rabbit
Isotype:	IgG
Clonality:	Polyclonal
Immunogen:	Synthetic peptide of human AQP7
Formulation:	pH7.4 PBS, 0.05% NaN <sub>3</sub> , 40% Glycerol
Concentration:	lot specific
Purification:	Antigen affinity purification
Conjugation:	Unconjugated
Storage:	Store at -20°C as received.
Stability:	Stable for 12 months from date of receipt.
Gene Name:	aquaporin 7
Database Link:	<a href="#">NP_001161</a> <a href="#">Entrez Gene 364 Human</a> <a href="#">O14520</a>
Background:	Aquaporins/major intrinsic protein (MIP) are a family of water-selective membrane channels. Aquaporin 7 has greater sequence similarity with AQP3 and AQP9 and they may be a subfamily. Aquaporin 7 and AQP3 are at the same chromosomal location suggesting that 9p13 may be a site of an aquaporin cluster. Aquaporin 7 facilitates water, glycerol and urea transport. It may play an important role in sperm function.
Synonyms:	AQP7L; AQP9; AQPap; GLYCQTL
Protein Families:	Druggable Genome, Transmembrane



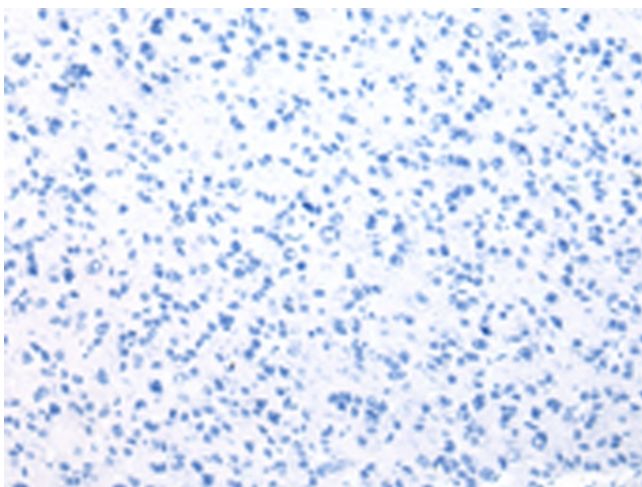
[View online »](#)

Protein Pathways: PPAR signaling pathway

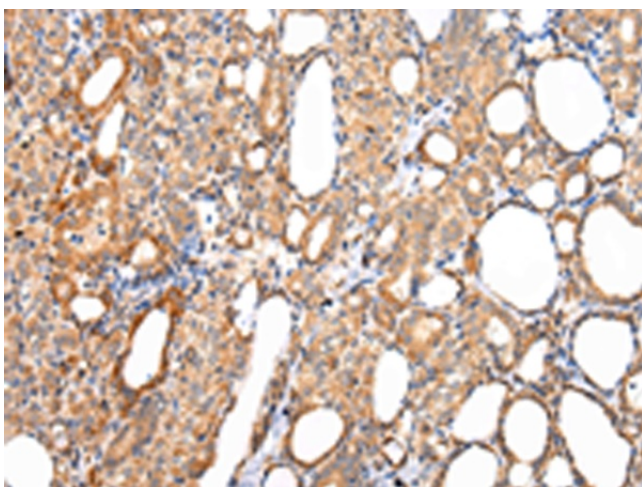
**Product images:**



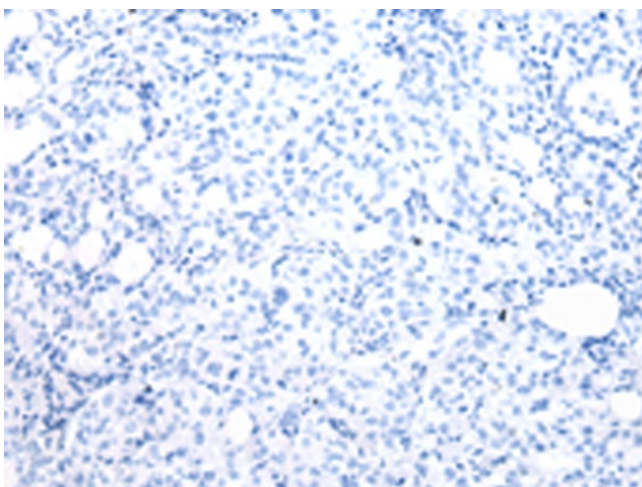
Immunohistochemistry of paraffin-embedded Human liver cancer tissue using TA351992 (AQP7 Antibody) at dilution 1/40 (Original magnification: ×200)



Immunohistochemistry of paraffin-embedded Human liver cancer tissue using TA351992 (AQP7 Antibody) at dilution 1/40, treated with synthetic peptide. (Original magnification: ×200)



Immunohistochemistry of paraffin-embedded Human thyroid cancer tissue using TA351992 (AQP7 Antibody) at dilution 1/40 (Original magnification:  $\times 200$ )



Immunohistochemistry of paraffin-embedded Human thyroid cancer tissue using TA351992 (AQP7 Antibody) at dilution 1/40, treated with synthetic peptide. (Original magnification:  $\times 200$ )