

Product datasheet for **TA351836**

EI24 Rabbit Polyclonal Antibody

Product data:

Product Type:	Primary Antibodies
Applications:	IHC
Recommended Dilution:	IHC: 10-50 Positive control: Human liver cancer Predicted cell location: Cytoplasm
Reactivity:	Human, Mouse, Rat
Host:	Rabbit
Isotype:	IgG
Clonality:	Polyclonal
Immunogen:	Synthetic peptide of human EI24
Formulation:	pH7.4 PBS, 0.05% NaN ₃ , 40% Glycerol
Concentration:	lot specific
Purification:	Antigen affinity purification
Conjugation:	Unconjugated
Storage:	Store at -20°C as received.
Stability:	Stable for 12 months from date of receipt.
Gene Name:	EI24, autophagy associated transmembrane protein
Database Link:	NP_004870 Entrez Gene 13663 Mouse Entrez Gene 300514 Rat Entrez Gene 9538 Human O14681
Background:	This gene encodes a putative tumor suppressor and has higher expression in p53-expressing cells than in control cells and is an immediate-early induction target of p53-mediated apoptosis. The encoded protein may suppress cell growth by inducing apoptotic cell death through the caspase 9 and mitochondrial pathways. This gene is located on human chromosome 11q24, a region frequently altered in cancers. Alternative splicing results in multiple transcript variants. Pseudogenes of this gene have been defined on chromosomes 1, 3, 7, and 8.
Synonyms:	EPG4; PIG8; TP53I8

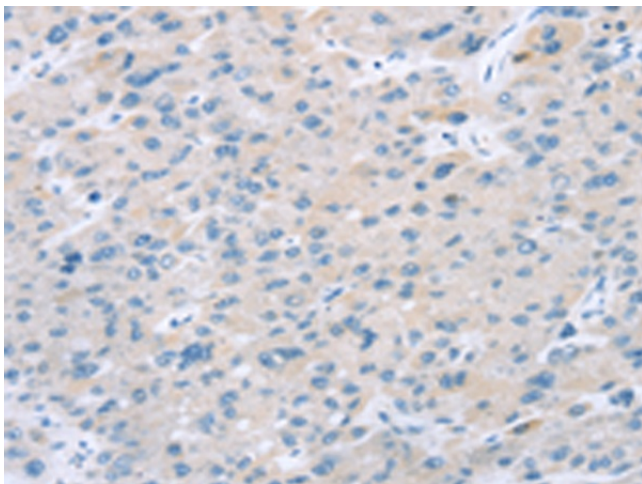


[View online »](#)

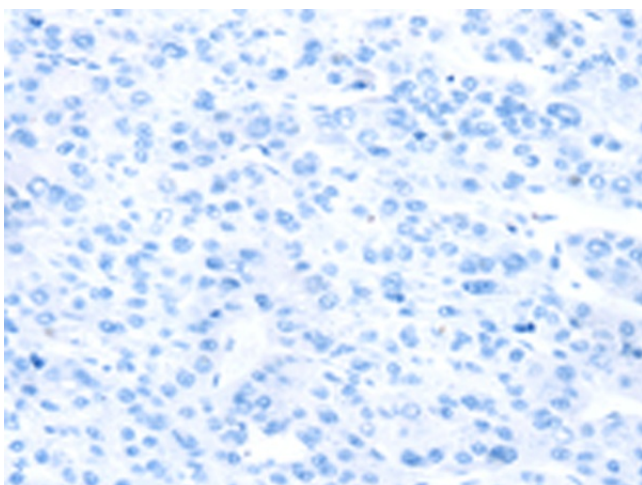
Protein Families: Druggable Genome, Transmembrane

Protein Pathways: p53 signaling pathway

Product images:



Immunohistochemistry of paraffin-embedded Human liver cancer tissue using TA351836 (EI24 Antibody) at dilution 1/25 (Original magnification: ×200)



Immunohistochemistry of paraffin-embedded Human liver cancer tissue using TA351836 (EI24 Antibody) at dilution 1/25, treated with synthetic peptide. (Original magnification: ×200)