

Product datasheet for **TA351776**

Syntaxin 3 (STX3) Rabbit Polyclonal Antibody

Product data:

Product Type:	Primary Antibodies
Applications:	IHC, WB
Recommended Dilution:	WB: 500-2000 WB positive control: A375 cells IHC: 35-150 Positive control: Human liver cancer Predicted cell location: Cytoplasm
Reactivity:	Human, Mouse, Rat
Host:	Rabbit
Isotype:	IgG
Clonality:	Polyclonal
Immunogen:	Synthetic peptide of human STX3
Formulation:	pH7.4 PBS, 0.05% NaN ₃ , 40% Glycerol
Concentration:	lot specific
Purification:	Antigen affinity purification
Conjugation:	Unconjugated
Storage:	Store at -20°C as received.
Stability:	Stable for 12 months from date of receipt.
Predicted Protein Size:	33 kDa
Gene Name:	syntaxin 3
Database Link:	NP_004168 Entrez Gene 20908 Mouse Entrez Gene 81802 Rat Entrez Gene 6809 Human Q13277
Background:	The gene is a member of the syntaxin family. The encoded protein is targeted to the apical membrane of epithelial cells where it forms clusters and is important in establishing and maintaining polarity necessary for protein trafficking involving vesicle fusion and exocytosis. Alternative splicing results in multiple transcript variants.
Synonyms:	STX3A

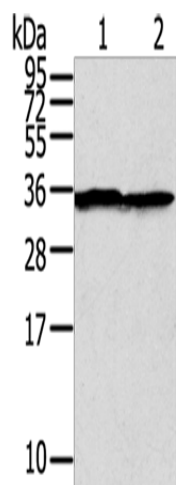


[View online »](#)

Protein Families: Druggable Genome, Stem cell - Pluripotency, Transmembrane

Protein Pathways: SNARE interactions in vesicular transport

Product images:



Gel: 8%SDS-PAGE

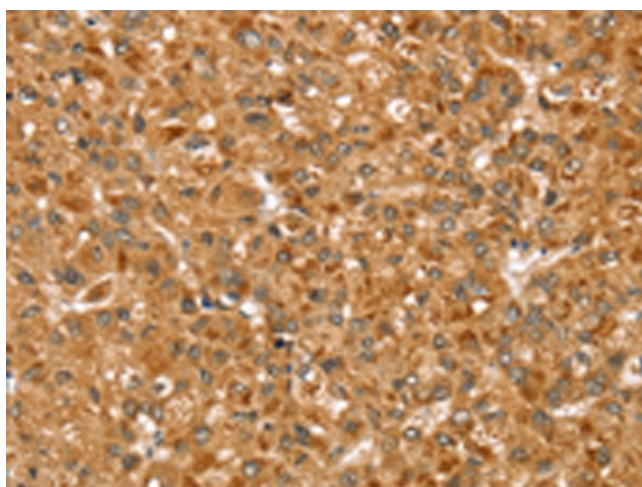
Lysate: 40 μ g

Lane: A375 cells

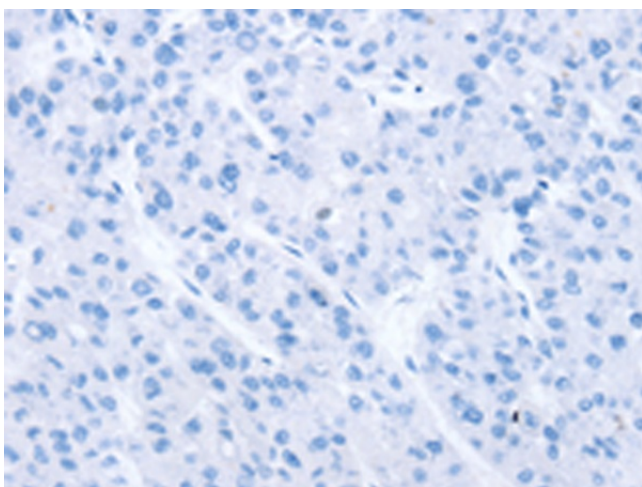
Primary antibody: TA351776 (STX3 Antibody) at dilution 1/400

Secondary antibody: Goat anti rabbit IgG at 1/8000 dilution

Exposure time: 10 seconds



Immunohistochemistry of paraffin-embedded Human liver cancer tissue using TA351776 (STX3 Antibody) at dilution 1/35 (Original magnification: \times 200)



Immunohistochemistry of paraffin-embedded Human liver cancer tissue using TA351776 (STX3 Antibody) at dilution 1/35, treated with synthetic peptide. (Original magnification: $\times 200$)