

Product datasheet for **TA351753**

SRGAP2 Rabbit Polyclonal Antibody

Product data:

Product Type:	Primary Antibodies
Applications:	IHC
Recommended Dilution:	IHC: 25-100 Positive control: Human liver cancer Predicted cell location: Cytoplasm
Reactivity:	Human, Mouse, Rat
Host:	Rabbit
Isotype:	IgG
Clonality:	Polyclonal
Immunogen:	Synthetic peptide of human SRGAP2
Formulation:	pH7.4 PBS, 0.05% NaN ₃ , 40% Glycerol
Concentration:	lot specific
Purification:	Antigen affinity purification
Conjugation:	Unconjugated
Storage:	Store at -20°C as received.
Stability:	Stable for 12 months from date of receipt.
Gene Name:	SLIT-ROBO Rho GTPase activating protein 2
Database Link:	NP_056141 Entrez Gene 14270 Mouse Entrez Gene 360840 Rat Entrez Gene 23380 Human O75044

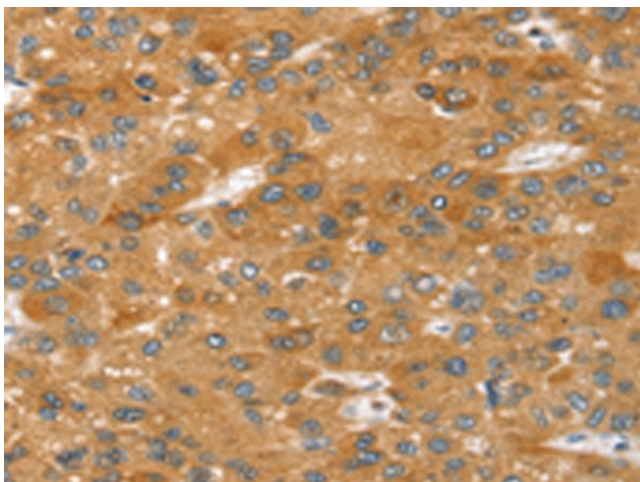
Background: This locus encodes a member of the SLIT-ROBO Rho GTPase activating protein family. The encoded protein stimulates GTPase activity of Rac1, and plays a role in cortical neuron development. This locus has several paralogs on human chromosome 1 resulting from segmental duplication. While this locus itself is conserved among various species, the paralogs are found only in the genus Homo, and not in the genomes of non-human great apes.

Synonyms: ARHGAP34; FNBP2; SRGAP2A; SRGAP3

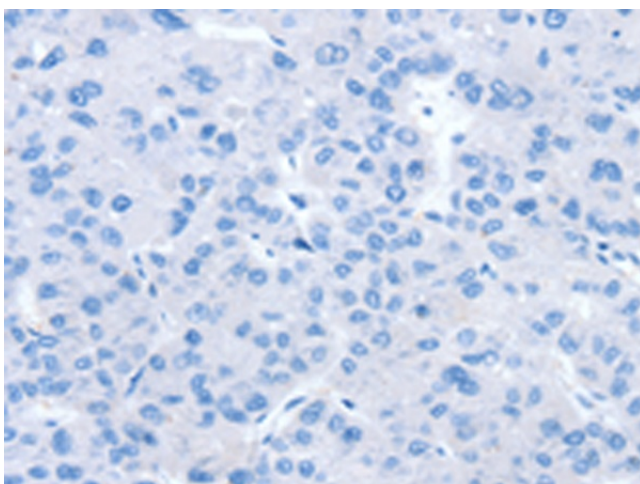
Protein Pathways: Axon guidance



[View online »](#)

Product images:

Immunohistochemistry of paraffin-embedded Human liver cancer tissue using TA351753 (SRGAP2 Antibody) at dilution 1/20 (Original magnification: $\times 200$)



Immunohistochemistry of paraffin-embedded Human liver cancer tissue using TA351753 (SRGAP2 Antibody) at dilution 1/20, treated with synthetic peptide. (Original magnification: $\times 200$)