

## Product datasheet for **TA351673**

### SIRT4 Rabbit Polyclonal Antibody

#### Product data:

Product Type:	Primary Antibodies
Applications:	IHC, WB
Recommended Dilution:	WB: 200-1000 WB positive control: Rat kidney tissue IHC: 25-100 Positive control: Human brain Predicted cell location: Cytoplasm
Reactivity:	Human, Mouse
Host:	Rabbit
Isotype:	IgG
Clonality:	Polyclonal
Immunogen:	Synthetic peptide of human SIRT4
Formulation:	pH7.4 PBS, 0.05% NaN <sub>3</sub> , 40% Glycerol
Concentration:	lot specific
Purification:	Antigen affinity purification
Conjugation:	Unconjugated
Storage:	Store at -20°C as received.
Stability:	Stable for 12 months from date of receipt.
Predicted Protein Size:	35 kDa
Gene Name:	sirtuin 4
Database Link:	<a href="#">NP_036372</a> <a href="#">Entrez Gene 75387 Mouse</a> <a href="#">Entrez Gene 23409 Human</a> <a href="#">Q9Y6E7</a>



[View online »](#)

**Background:**

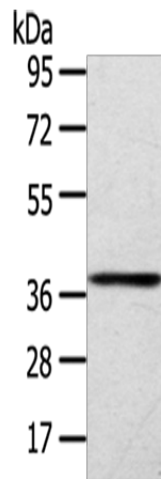
This gene encodes a member of the sirtuin family of proteins, homologs to the yeast Sir2 protein. Members of the sirtuin family are characterized by a sirtuin core domain and grouped into four classes. The functions of human sirtuins have not yet been determined; however, yeast sirtuin proteins are known to regulate epigenetic gene silencing and suppress recombination of rDNA. Studies suggest that the human sirtuins may function as intracellular regulatory proteins with mono-ADP-ribosyltransferase activity.

**Synonyms:**

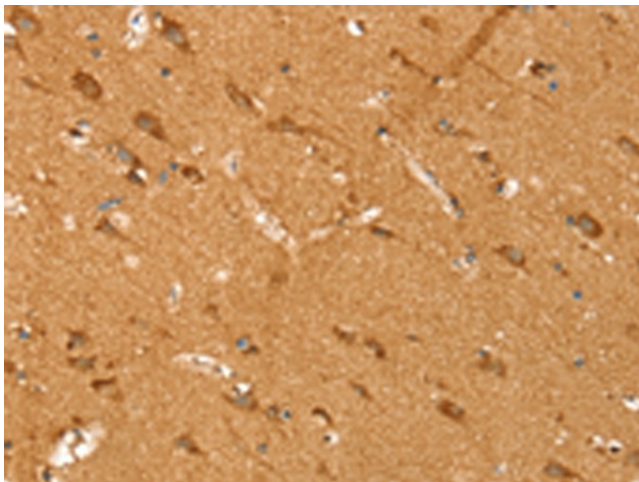
SIR2L4

**Protein Families:**

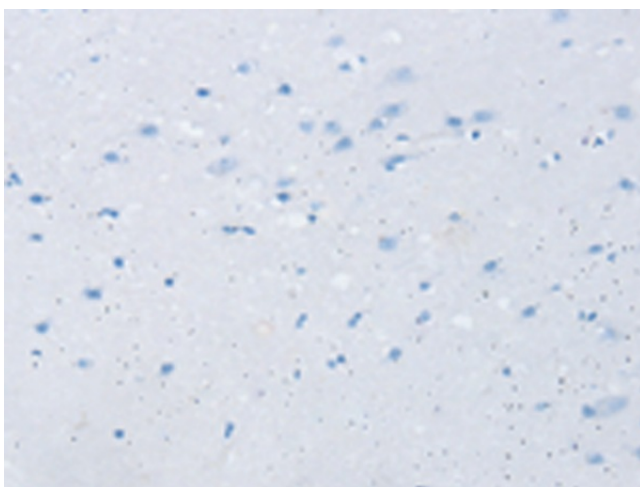
Druggable Genome, Transcription Factors

**Product images:**

Gel: 8%SDS-PAGE  
Lysate: 40  $\mu$ g  
Lane: Rat kidney tissue  
Primary antibody: TA351673 (SIRT4 Antibody) at dilution 1/200  
Secondary antibody: Goat anti rabbit IgG at 1/8000 dilution  
Exposure time: 3 minutes



Immunohistochemistry of paraffin-embedded Human brain tissue using TA351673 (SIRT4 Antibody) at dilution 1/35 (Original magnification:  $\times$ 200)



Immunohistochemistry of paraffin-embedded Human brain tissue using TA351673 (SIRT4 Antibody) at dilution 1/35, treated with synthetic peptide. (Original magnification:  $\times 200$ )