

Product datasheet for **TA351539**

Plexin A3 (PLXNA3) Rabbit Polyclonal Antibody

Product data:

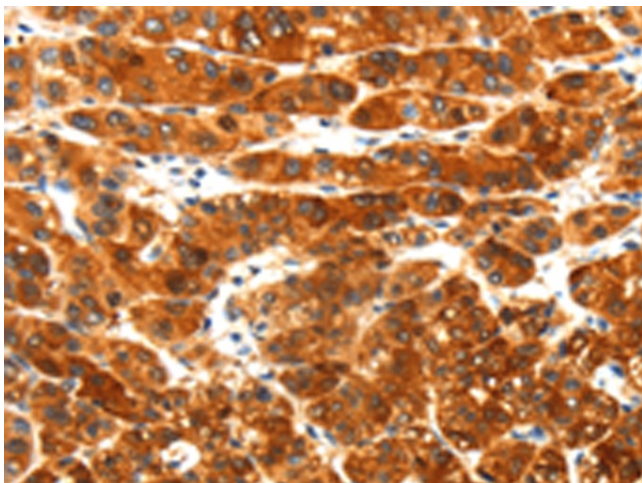
Product Type:	Primary Antibodies
Applications:	IHC
Recommended Dilution:	IHC: 30-150 Positive control: Human liver cancer Predicted cell location: Cell membrane
Reactivity:	Human, Mouse, Rat
Host:	Rabbit
Isotype:	IgG
Clonality:	Polyclonal
Immunogen:	Synthetic peptide of human PLXNA3
Formulation:	pH7.4 PBS, 0.05% NaN ₃ , 40% Glycerol
Concentration:	lot specific
Purification:	Antigen affinity purification
Conjugation:	Unconjugated
Storage:	Store at -20°C as received.
Stability:	Stable for 12 months from date of receipt.
Gene Name:	plexin A3
Database Link:	NP_059984 Entrez Gene 55558 Human P51805
Background:	This gene encodes a member of the plexin class of proteins. The encoded protein is a class 3 semaphorin receptor, and may be involved in cytoskeletal remodeling and as well as apoptosis. Studies of a similar gene in zebrafish suggest that it is important for axon pathfinding in the developing nervous system. This gene may be associated with tumor progression.
Synonyms:	6.3; HSSEXGENE; PLXN3; PLXN4; XAP-6
Protein Families:	Druggable Genome



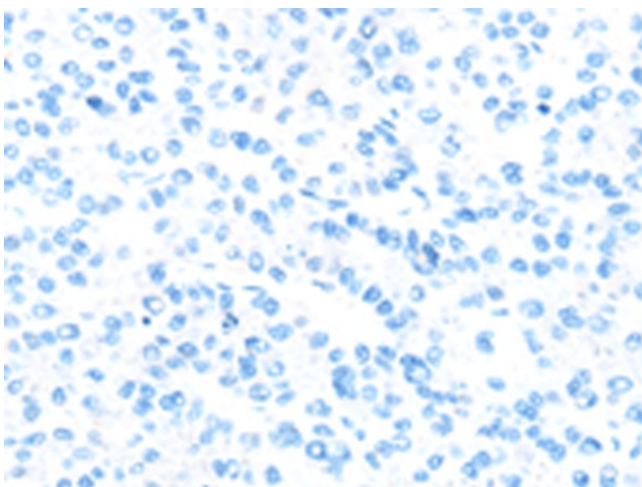
[View online »](#)

Protein Pathways: Axon guidance

Product images:



Immunohistochemistry of paraffin-embedded Human liver cancer tissue using TA351539 (PLXNA3 Antibody) at dilution 1/25 (Original magnification: $\times 200$)



Immunohistochemistry of paraffin-embedded Human liver cancer tissue using TA351539 (PLXNA3 Antibody) at dilution 1/25, treated with synthetic peptide. (Original magnification: $\times 200$)