

Product datasheet for **TA351532**

PKMYT1 Rabbit Polyclonal Antibody

Product data:

Product Type:	Primary Antibodies
Applications:	IHC, WB
Recommended Dilution:	WB: 200-1000 WB positive control: A375 cell lysate IHC: 25-50 Positive control: Human tonsil Predicted cell location: Cytoplasm
Reactivity:	Human, Mouse
Host:	Rabbit
Isotype:	IgG
Clonality:	Polyclonal
Immunogen:	Synthetic peptide of human PKMYT1
Formulation:	pH7.4 PBS, 0.05% NaN ₃ , 40% Glycerol
Concentration:	lot specific
Purification:	Antigen affinity purification
Conjugation:	Unconjugated
Storage:	Store at -20°C as received.
Stability:	Stable for 12 months from date of receipt.
Predicted Protein Size:	55 kDa
Gene Name:	protein kinase, membrane associated tyrosine/threonine 1
Database Link:	NP_004194 Entrez Gene 268930 Mouse Entrez Gene 9088 Human Q99640

Background: This gene encodes a member of the serine/threonine protein kinase family. The encoded protein is a membrane-associated kinase that negatively regulates the G2/M transition of the cell cycle by phosphorylating and inactivating cyclin-dependent kinase 1. The activity of the encoded protein is regulated by polo-like kinase 1. Alternatively spliced transcript variants encoding multiple isoforms have been observed for this gene.



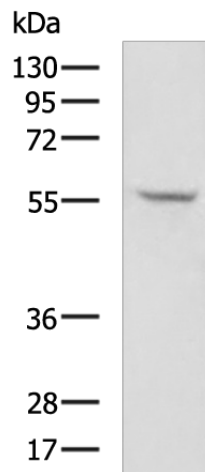
[View online »](#)

Synonyms: MYT1; PPP1R126

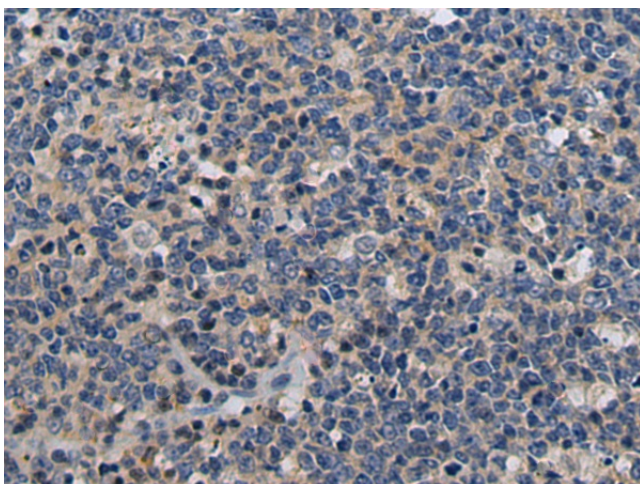
Protein Families: Druggable Genome, Protein Kinase

Protein Pathways: Cell cycle, Oocyte meiosis, Progesterone-mediated oocyte maturation

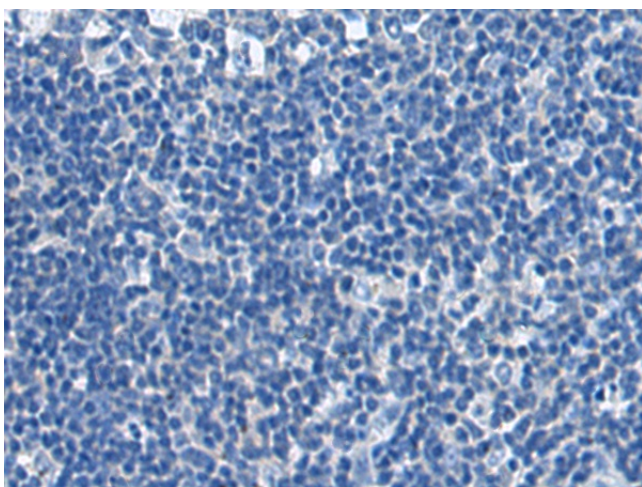
Product images:



Gel: 8%SDS-PAGE
Lysate: 40 µg
Lane: A375 cell lysate
Primary antibody: TA351532 (PKMYT1 Antibody) at dilution 1/200
Secondary antibody: Goat anti rabbit IgG at 1/5000 dilution
Exposure time: 5 minutes



Immunohistochemistry of paraffin-embedded Human tonsil tissue using TA351532 (PKMYT1 Antibody) at dilution 1/35 (Original magnification: ×200)



Immunohistochemistry of paraffin-embedded Human tonsil tissue using TA351532 (PKMYT1 Antibody) at dilution 1/35, treated with synthetic peptide. (Original magnification: $\times 200$)