

Product datasheet for **TA351248**

H2AC4 Rabbit Polyclonal Antibody

Product data:

Product Type:	Primary Antibodies
Applications:	IHC, WB
Recommended Dilution:	WB: 200-1000 WB positive control: Hela, 231 and K562 cells, human fetal brain tissue IHC: 50-200 Positive control: Human cervical cancer Predicted cell location: Nucleus
Reactivity:	Human, Mouse
Host:	Rabbit
Isotype:	IgG
Clonality:	Polyclonal
Immunogen:	Synthetic peptide of human HIST1H2AB
Formulation:	pH7.4 PBS, 0.05% NaN ₃ , 40% Glycerol
Concentration:	lot specific
Purification:	Antigen affinity purification
Conjugation:	Unconjugated
Storage:	Store at -20°C as received.
Stability:	Stable for 12 months from date of receipt.
Predicted Protein Size:	14 kDa
Gene Name:	histone cluster 1, H2ab
Database Link:	NP_003504 Entrez Gene 8335 Human P04908



[View online »](#)

Background:

Histones are basic nuclear proteins that are responsible for the nucleosome structure of the chromosomal fiber in eukaryotes. This structure consists of approximately 146 bp of DNA wrapped around a nucleosome, an octamer composed of pairs of each of the four core histones (H2A, H2B, H3, and H4). The chromatin fiber is further compacted through the interaction of a linker histone, H1, with the DNA between the nucleosomes to form higher order chromatin structures. This gene is intronless and encodes a member of the histone H2A family. Transcripts from this gene lack polyA tails; instead, they contain a palindromic termination element. This gene is found in the large histone gene cluster on chromosome 6p22-p21.3.

Synonyms:

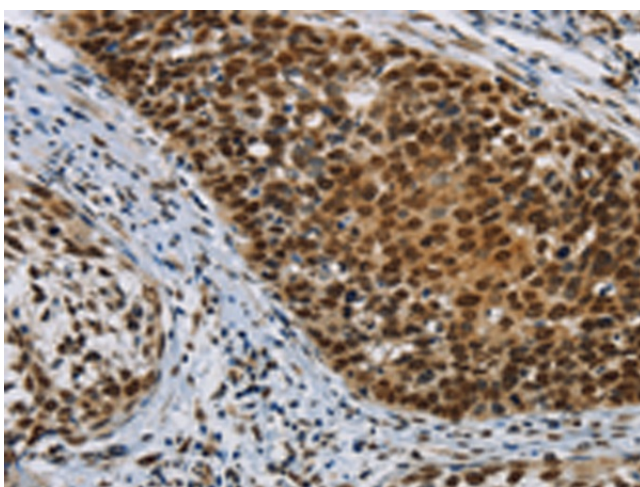
H2A; H2AFM; m

Protein Pathways:

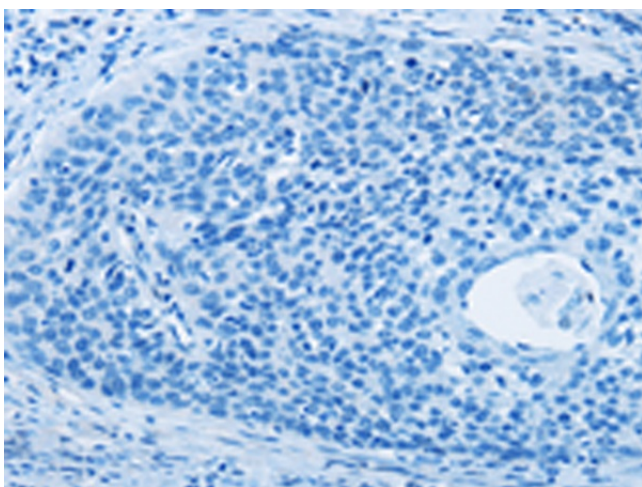
Systemic lupus erythematosus

Product images:

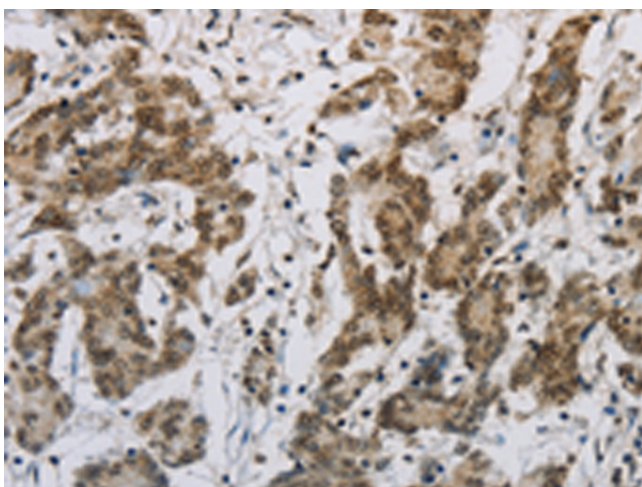

Gel: 10%SDS-PAGE
 Lysate: 40 µg
 Lane 1-4: HeLa cells
 231 cells
 K562 cells
 human fetal brain tissue
 Primary antibody: TA351248 (H2AC4 Antibody) at dilution 1/250
 Secondary antibody: Goat anti rabbit IgG at 1/8000 dilution
 Exposure time: 5 minutes



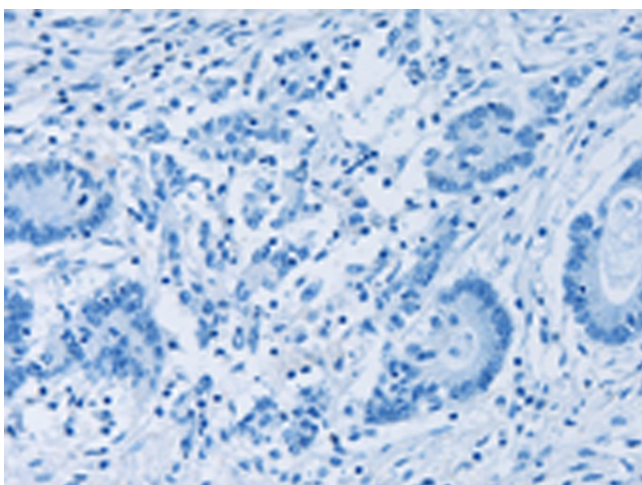
Immunohistochemistry of paraffin-embedded Human cervical cancer tissue using TA351248 (H2AC4 Antibody) at dilution 1/30 (Original magnification: ×200)



Immunohistochemistry of paraffin-embedded Human cervical cancer tissue using TA351248 (H2AC4 Antibody) at dilution 1/30, treated with synthetic peptide. (Original magnification: x200)



Immunohistochemistry of paraffin-embedded Human colon cancer tissue using TA351248 (H2AC4 Antibody) at dilution 1/30 (Original magnification: x200)



Immunohistochemistry of paraffin-embedded Human colon cancer tissue using TA351248 (H2AC4 Antibody) at dilution 1/30, treated with synthetic peptide. (Original magnification: x200)