

## Product datasheet for **TA351125**

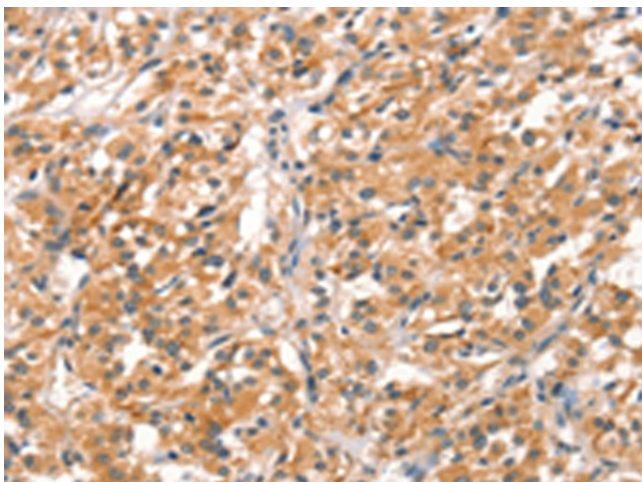
### DBC2 (RHOBTB2) Rabbit Polyclonal Antibody

#### Product data:

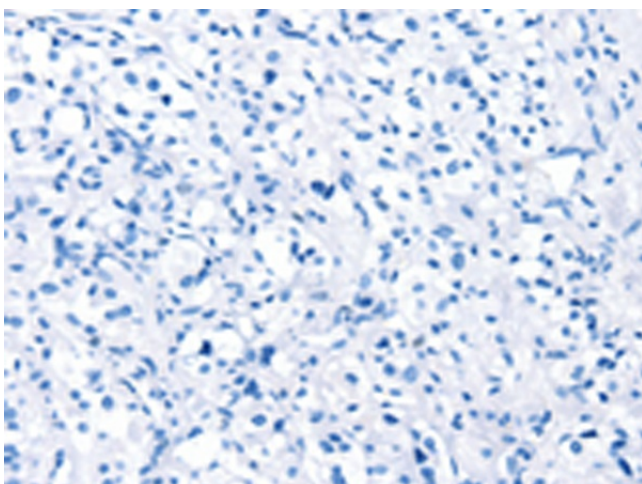
|                       |   |
|-----------------------|---|
| Product Type:         | Primary Antibodies  |
| Applications:         | IHC   |
| Recommended Dilution: | IHC: 25-100<br>Positive control: Human thyroid cancer<br>Predicted cell location: Cytoplasm   |
| Reactivity:           | Human, Mouse  |
| Host:                 | Rabbit  |
| Isotype:              | IgG   |
| Clonality:            | Polyclonal  |
| Immunogen:            | Synthetic peptide of human RHOBTB2  |
| Formulation:          | pH7.4 PBS, 0.05% NaN <sub>3</sub> , 40% Glycerol  |
| Concentration:        | lot specific  |
| Purification:         | Antigen affinity purification   |
| Conjugation:          | Unconjugated  |
| Storage:              | Store at -20°C as received.   |
| Stability:            | Stable for 12 months from date of receipt.  |
| Gene Name:            | Rho related BTB domain containing 2   |
| Database Link:        | <a href="#">NP_055993</a><br><a href="#">Entrez Gene 246710 Mouse</a> <a href="#">Entrez Gene 23221 Human</a><br><a href="#">Q9BYZ6</a>   |
| Background:           | The protein encoded by this gene is a small Rho GTPase and a candidate tumor suppressor. The encoded protein interacts with the cullin-3 protein, a ubiquitin E3 ligase necessary for mitotic cell division. This protein inhibits the growth and spread of some types of breast cancer. Three transcript variants encoding different isoforms have been found for this gene. |
| Synonyms:             | DBC2  |
| Protein Pathways:     | Ubiquitin mediated proteolysis  |



[View online »](#)

**Product images:**

Immunohistochemistry of paraffin-embedded Human thyroid cancer tissue using TA351125 (RHOBTB2 Antibody) at dilution 1/30 (Original magnification:  $\times 200$ )



Immunohistochemistry of paraffin-embedded Human thyroid cancer tissue using TA351125 (RHOBTB2 Antibody) at dilution 1/30, treated with synthetic peptide. (Original magnification:  $\times 200$ )