

## Product datasheet for **TA351071**

### CENPE Rabbit Polyclonal Antibody

#### Product data:

Product Type:	Primary Antibodies
Applications:	IHC, WB
Recommended Dilution:	WB: 200-1000 WB positive control: Human vermiform appendix tissue lysate IHC: 50-100 Positive control: Human liver cancer Predicted cell location: Cytoplasm
Reactivity:	Human, Mouse
Host:	Rabbit
Isotype:	IgG
Clonality:	Polyclonal
Immunogen:	Synthetic peptide of human CENPE
Formulation:	pH7.4 PBS, 0.05% NaN <sub>3</sub> , 40% Glycerol
Concentration:	lot specific
Purification:	Antigen affinity purification
Conjugation:	Unconjugated
Storage:	Store at -20°C as received.
Stability:	Stable for 12 months from date of receipt.
Predicted Protein Size:	316 kDa
Gene Name:	centromere protein E
Database Link:	<a href="#">NP_001804</a> <a href="#">Entrez Gene 1062 Human</a> <a href="#">Q02224</a>

**Background:** Centrosome-associated protein E is a kinesin-like motor protein that accumulates in the G2 phase of the cell cycle. Unlike other centrosome-associated proteins, it is not present during interphase and first appears at the centromere region of chromosomes during prometaphase. CENPE is proposed to be one of the motors responsible for mammalian chromosome movement and/or spindle elongation.

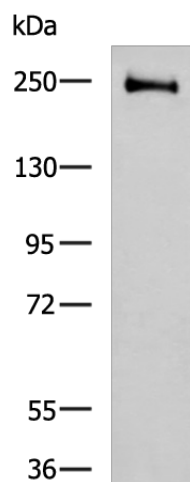


[View online »](#)

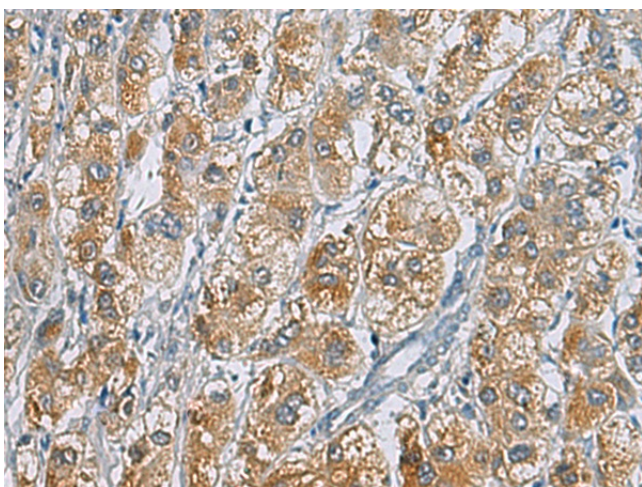
**Synonyms:** CENP-E; KIF10; MCPH13; PPP1R61

**Protein Families:** Druggable Genome, Stem cell - Pluripotency

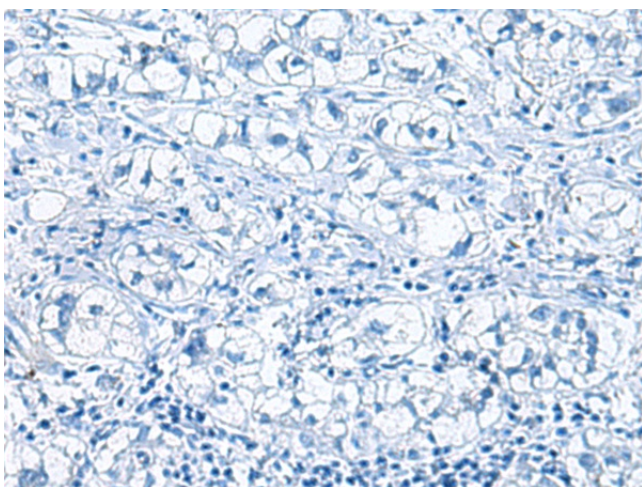
**Product images:**



Gel: 6%SDS-PAGE  
Lysate: 40  $\mu$ g  
Lane: Human vermiform appendix tissue lysate  
Primary antibody: TA351071 (CENPE Antibody) at dilution 1/250  
Secondary antibody: Goat anti rabbit IgG at 1/5000 dilution  
Exposure time: 40 seconds



Immunohistochemistry of paraffin-embedded Human liver cancer tissue using TA351071 (CENPE Antibody) at dilution 1/20 (Original magnification:  $\times$ 200)



Immunohistochemistry of paraffin-embedded Human liver cancer tissue using TA351071 (CENPE Antibody) at dilution 1/20, treated with synthetic peptide. (Original magnification: ×200)