

Product datasheet for **TA351040**

CCR6 Rabbit Polyclonal Antibody

Product data:

Product Type:	Primary Antibodies
Applications:	IHC, WB
Recommended Dilution:	WB: 200-1000 WB positive control: Human bladder transitional cell carcinoma grade 2-3 tissue, HepG2 cell, HT-29 cell, 231 cell lysates IHC: 20-100 Positive control: Human cervical cancer Predicted cell location: Cytoplasm
Reactivity:	Human
Host:	Rabbit
Isotype:	IgG
Clonality:	Polyclonal
Immunogen:	Synthetic peptide of human CCR6
Formulation:	pH7.4 PBS, 0.05% NaN ₃ , 40% Glycerol
Concentration:	lot specific
Purification:	Antigen affinity purification
Conjugation:	Unconjugated
Storage:	Store at -20°C as received.
Stability:	Stable for 12 months from date of receipt.
Predicted Protein Size:	42 kDa
Gene Name:	C-C motif chemokine receptor 6
Database Link:	NP_004358 Entrez Gene 1235 Human P51684



[View online »](#)

Background:

This gene encodes a member of the beta chemokine receptor family, which is predicted to be a seven transmembrane protein similar to G protein-coupled receptors. The gene is preferentially expressed by immature dendritic cells and memory T cells. The ligand of this receptor is macrophage inflammatory protein 3 alpha (MIP-3 alpha). This receptor has been shown to be important for B-lineage maturation and antigen-driven B-cell differentiation, and it may regulate the migration and recruitment of dendritic and T cells during inflammatory and immunological responses. Alternatively spliced transcript variants that encode the same protein have been described for this gene.

Synonyms:

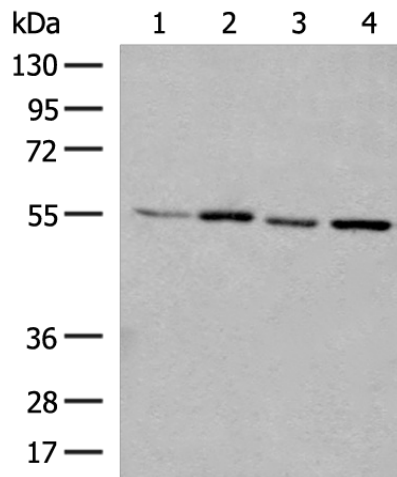
BN-1; C-C CKR-6; CC-CKR-6; CCR-6; CD196; CKR-L3; CKRL3; CMKBR6; DCR2; DRY6; GPR29; GPRCY4; STRL22

Protein Families:

Druggable Genome, GPCR, Transmembrane

Protein Pathways:

Chemokine signaling pathway, Cytokine-cytokine receptor interaction

Product images:

Gel: 8%SDS-PAGE

Lysate: 40 µg

Lane 1-4: Human bladder transitional cell carcinoma grade 2-3 tissue

HepG2 cell

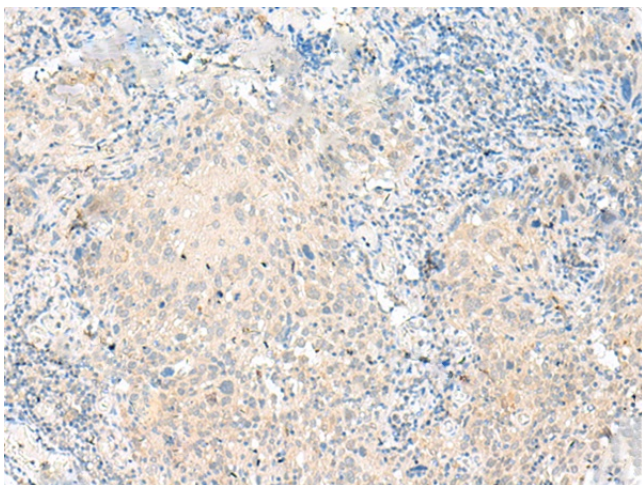
HT-29 cell

231 cell lysates

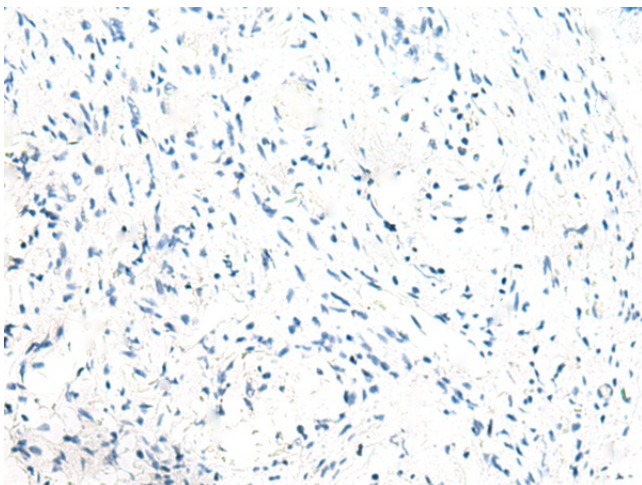
Primary antibody: TA351040 (CCR6 Antibody) at dilution 1/300

Secondary antibody: Goat anti rabbit IgG at 1/8000 dilution

Exposure time: 30 seconds



Immunohistochemistry of paraffin-embedded Human cervical cancer tissue using TA351040 (CCR6 Antibody) at dilution 1/30 (Original magnification: $\times 200$)



Immunohistochemistry of paraffin-embedded Human cervical cancer tissue using TA351040 (CCR6 Antibody) at dilution 1/30, treated with synthetic peptide. (Original magnification: $\times 200$)