

Product datasheet for **TA351006**

Bile salt activated lipase (CEL) Rabbit Polyclonal Antibody

Product data:

Product Type:	Primary Antibodies
Applications:	IHC, WB
Recommended Dilution:	WB: 500-2000 WB positive control: Mouse Pancreas tissue lysate IHC: 50-200 Positive control: Human gastric cancer Predicted cell location: secreted
Reactivity:	Human, Mouse
Host:	Rabbit
Isotype:	IgG
Clonality:	Polyclonal
Immunogen:	Synthetic peptide of human CEL
Formulation:	pH7.4 PBS, 0.05% NaN ₃ , 40% Glycerol
Concentration:	lot specific
Purification:	Antigen affinity purification
Conjugation:	Unconjugated
Storage:	Store at -20°C as received.
Stability:	Stable for 12 months from date of receipt.
Predicted Protein Size:	79 kDa
Gene Name:	carboxyl ester lipase
Database Link:	NP_001798 Entrez Gene 12613 Mouse Entrez Gene 1056 Human



[View online »](#)

Background:

The protein encoded by this gene is a glycoprotein secreted from the pancreas into the digestive tract and from the lactating mammary gland into human milk. The physiological role of this protein is in cholesterol and lipid-soluble vitamin ester hydrolysis and absorption. This encoded protein promotes large chylomicron production in the intestine. Also its presence in plasma suggests its interactions with cholesterol and oxidized lipoproteins to modulate the progression of atherosclerosis. In pancreatic tumoral cells, this encoded protein is thought to be sequestered within the Golgi compartment and is probably not secreted.

Synonyms:

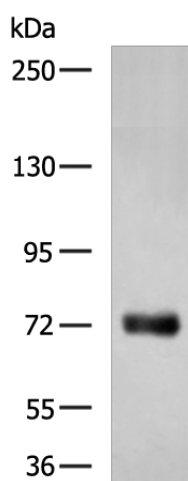
BAL; BSDL; BSSL; CEase; CELL; FAP; FAPP; LIPA; MODY8

Protein Families:

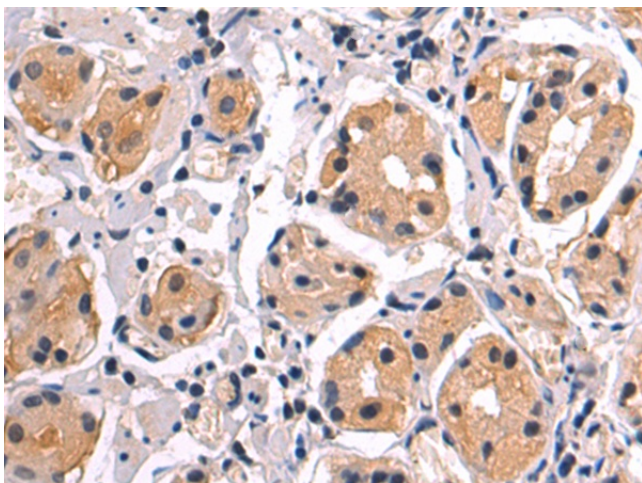
Druggable Genome

Protein Pathways:

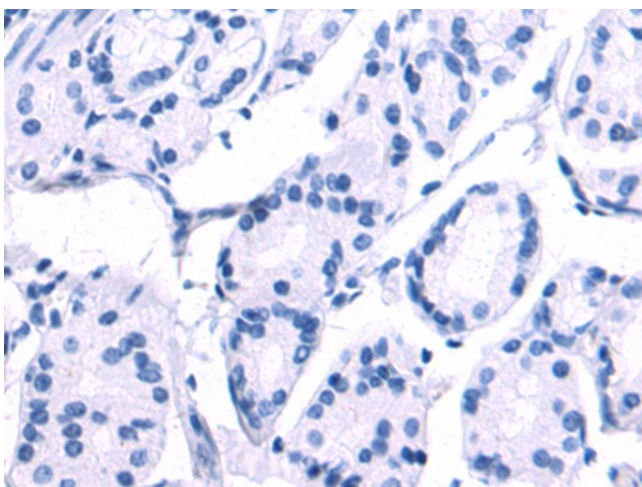
Glycerolipid metabolism, Metabolic pathways, Steroid biosynthesis

Product images:


Gel: 6%SDS-PAGE
 Lysate: 40 µg
 Lane: Mouse Pancreas tissue lysate
 Primary antibody: TA351006 (CEL Antibody) at dilution 1/800
 Secondary antibody: Goat anti rabbit IgG at 1/5000 dilution
 Exposure time: 1 minute



Immunohistochemistry of paraffin-embedded Human gastric cancer tissue using TA351006 (CEL Antibody) at dilution 1/50 (Original magnification: ×200)



Immunohistochemistry of paraffin-embedded Human gastric cancer tissue using TA351006 (CEL Antibody) at dilution 1/50, treated with synthetic peptide. (Original magnification: ×200)