

## Product datasheet for **TA350991**

### ARSB Rabbit Polyclonal Antibody

#### Product data:

Product Type:	Primary Antibodies
Applications:	IHC, WB
Recommended Dilution:	WB: 200-1000 WB positive control: Human fetal liver tissue IHC: 50-200 Positive control: Human gastric cancer Predicted cell location: Cytoplasm
Reactivity:	Human
Host:	Rabbit
Isotype:	IgG
Clonality:	Polyclonal
Immunogen:	Synthetic peptide of human ARSB
Formulation:	pH7.4 PBS, 0.05% NaN <sub>3</sub> , 40% Glycerol
Concentration:	lot specific
Purification:	Antigen affinity purification
Conjugation:	Unconjugated
Storage:	Store at -20°C as received.
Stability:	Stable for 12 months from date of receipt.
Predicted Protein Size:	60 kDa
Gene Name:	arylsulfatase B
Database Link:	<a href="#">NP_000037</a> <a href="#">Entrez Gene 411 Human P15848</a>



[View online »](#)

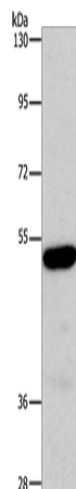
**Background:** Arylsulfatase B encoded by this gene belongs to the sulfatase family. The arylsulfatase B homodimer hydrolyzes sulfate groups of N-Acetyl-D-galactosamine, chondroitin sulfate, and dermatan sulfate. The protein is targeted to the lysosome. Mucopolysaccharidosis type VI is an autosomal recessive lysosomal storage disorder resulting from a deficiency of arylsulfatase B. Two alternatively spliced transcript variants encoding distinct isoforms have been found for this gene.

**Synonyms:** ASB; G4S; MPS6

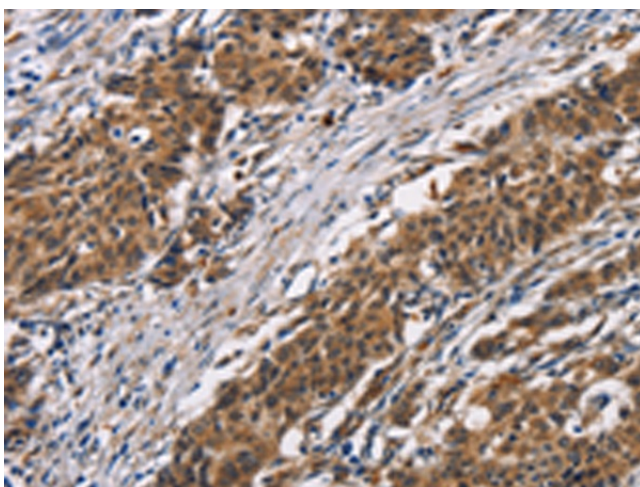
**Protein Families:** Druggable Genome

**Protein Pathways:** Glycosaminoglycan degradation, Lysosome, Metabolic pathways

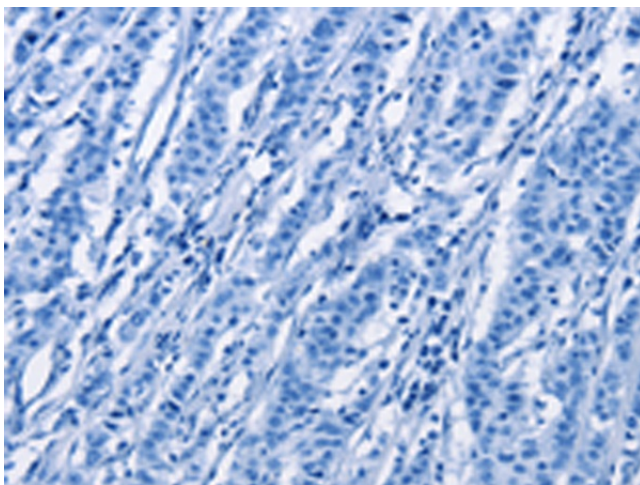
### Product images:



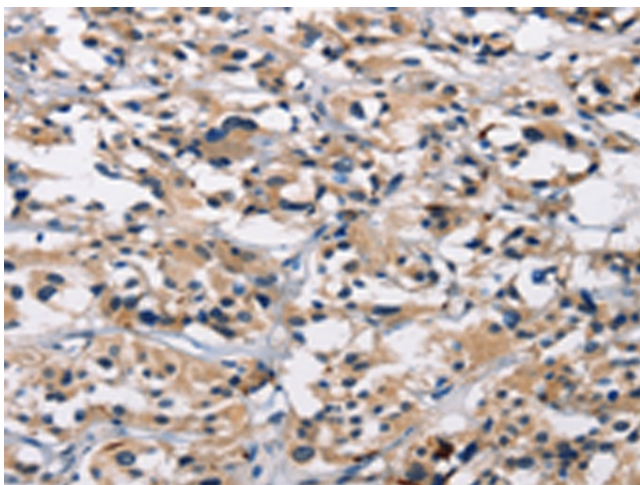
Gel: 6%SDS-PAGE  
Lysate: 40 µg  
Lane: Human fetal liver tissue  
Primary antibody: TA350991 (ARSB Antibody) at dilution 1/340  
Secondary antibody: Goat anti rabbit IgG at 1/8000 dilution  
Exposure time: 10 minutes



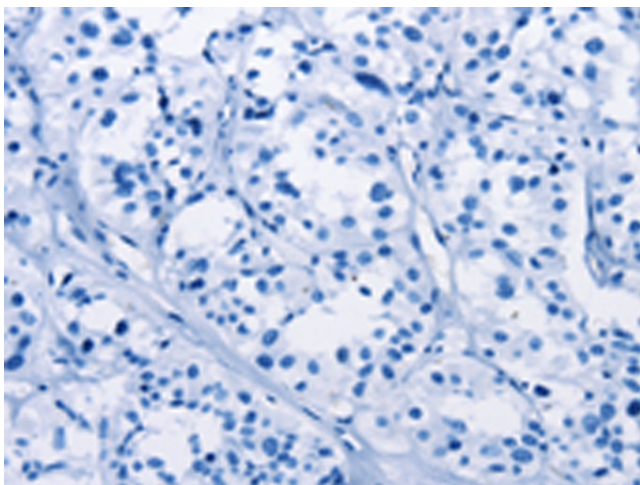
Immunohistochemistry of paraffin-embedded Human gastric cancer tissue using TA350991 (ARSB Antibody) at dilution 1/50 (Original magnification: ×200)



Immunohistochemistry of paraffin-embedded Human gastric cancer tissue using TA350991 (ARSB Antibody) at dilution 1/50, treated with synthetic peptide. (Original magnification:  $\times 200$ )



Immunohistochemistry of paraffin-embedded Human thyroid cancer tissue using TA350991 (ARSB Antibody) at dilution 1/50 (Original magnification:  $\times 200$ )



Immunohistochemistry of paraffin-embedded Human thyroid cancer tissue using TA350991 (ARSB Antibody) at dilution 1/50, treated with synthetic peptide. (Original magnification:  $\times 200$ )