

## Product datasheet for **TA350980**

### alpha Synuclein (SNCA) Rabbit Polyclonal Antibody

#### Product data:

Product Type:	Primary Antibodies
Applications:	IHC
Recommended Dilution:	IHC: 50-200 Positive control: Human thyroid cancer Predicted cell location: Cytoplasm
Reactivity:	Human, Mouse, Rat
Host:	Rabbit
Isotype:	IgG
Clonality:	Polyclonal
Immunogen:	Synthetic peptide of human SNCA
Formulation:	pH7.4 PBS, 0.05% NaN <sub>3</sub> , 40% Glycerol
Concentration:	lot specific
Purification:	Antigen affinity purification
Conjugation:	Unconjugated
Storage:	Store at -20°C as received.
Stability:	Stable for 12 months from date of receipt.
Gene Name:	synuclein alpha
Database Link:	<a href="#">NP_000336</a> <a href="#">Entrez Gene 20617 Mouse</a> <a href="#">Entrez Gene 29219 Rat</a> <a href="#">Entrez Gene 6622 Human</a> <a href="#">P37840</a>
Background:	Alpha-synuclein is a member of the synuclein family, which also includes beta- and gamma-synuclein. Synucleins are abundantly expressed in the brain and alpha- and beta-synuclein inhibit phospholipase D2 selectively. SNCA may serve to integrate presynaptic signaling and membrane trafficking. Defects in SNCA have been implicated in the pathogenesis of Parkinson disease. SNCA peptides are a major component of amyloid plaques in the brains of patients with Alzheimer's disease. Four alternatively spliced transcripts encoding two different isoforms have been identified for this gene.
Synonyms:	NACP; PARK1; PARK4; PD1

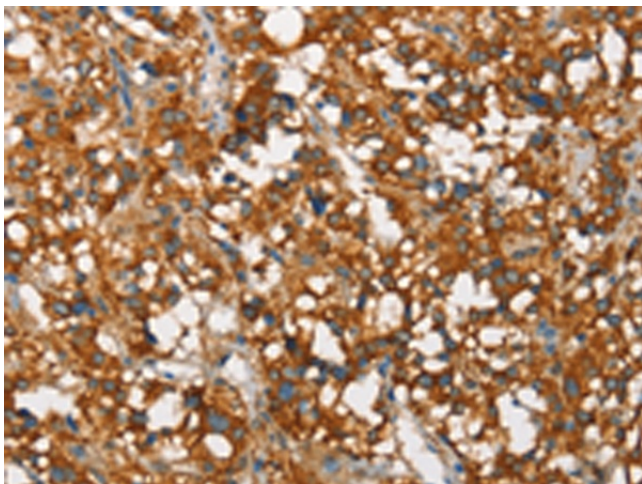


[View online »](#)

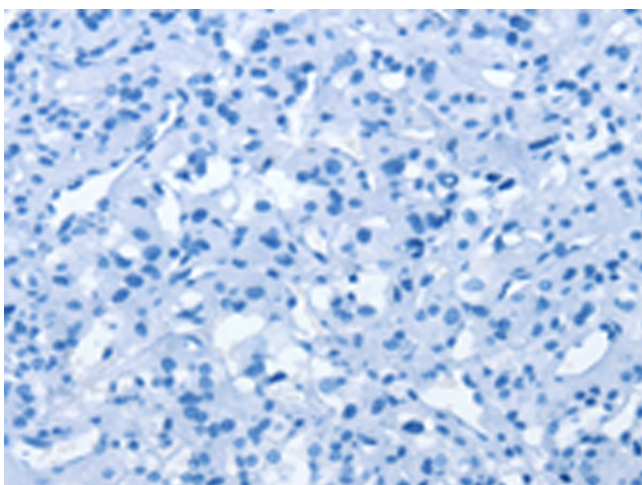
Protein Families: Druggable Genome

Protein Pathways: Alzheimer's disease, Parkinson's disease

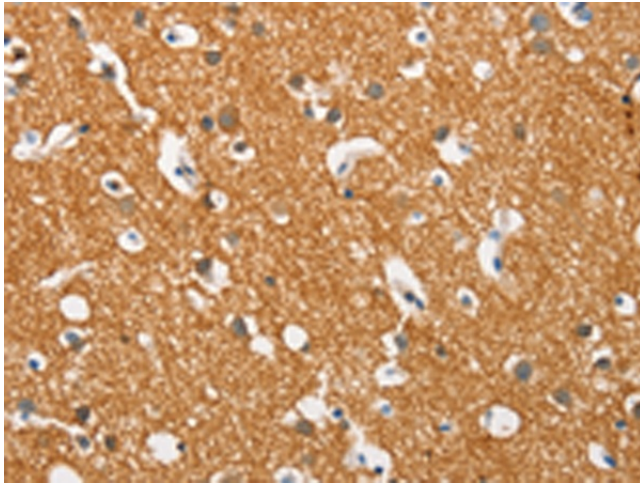
### Product images:



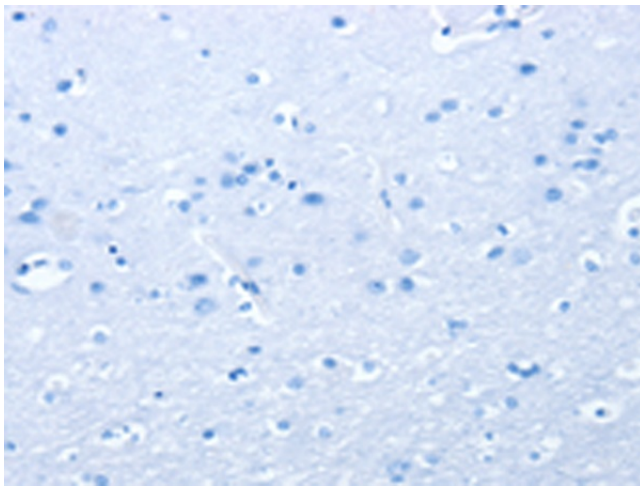
Immunohistochemistry of paraffin-embedded Human thyroid cancer tissue using TA350980 (SNCA Antibody) at dilution 1/60 (Original magnification:  $\times 200$ )



Immunohistochemistry of paraffin-embedded Human thyroid cancer tissue using TA350980 (SNCA Antibody) at dilution 1/60, treated with synthetic peptide. (Original magnification:  $\times 200$ )



Immunohistochemistry of paraffin-embedded Human brain tissue using TA350980 (SNCA Antibody) at dilution 1/60 (Original magnification: ×200)



Immunohistochemistry of paraffin-embedded Human brain tissue using TA350980 (SNCA Antibody) at dilution 1/60, treated with synthetic peptide. (Original magnification: ×200)