

## Product datasheet for **TA350860**

### APC Rabbit Polyclonal Antibody

#### Product data:

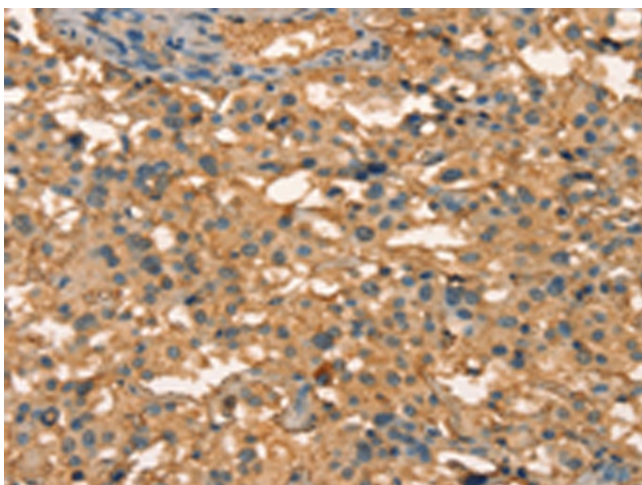
|                       |  |
|-----------------------|--|
| Product Type:         | Primary Antibodies   |
| Applications:         | IHC  |
| Recommended Dilution: | IHC: 25-100<br>Positive control: Human thyroid cancer<br>Predicted cell location: Cytoplasm  |
| Reactivity:           | Human, Mouse, Rat  |
| Host:                 | Rabbit   |
| Isotype:              | IgG  |
| Clonality:            | Polyclonal   |
| Immunogen:            | Synthetic peptide of human APC   |
| Formulation:          | pH7.4 PBS, 0.05% NaN <sub>3</sub> , 40% Glycerol   |
| Concentration:        | lot specific   |
| Purification:         | Antigen affinity purification  |
| Conjugation:          | Unconjugated   |
| Storage:              | Store at -20°C as received.  |
| Stability:            | Stable for 12 months from date of receipt.   |
| Gene Name:            | adenomatous polyposis coli   |
| Database Link:        | <a href="#">NP_000029</a><br><a href="#">Entrez Gene 11789 Mouse</a> <a href="#">Entrez Gene 24205 Rat</a> <a href="#">Entrez Gene 324 Human</a><br><a href="#">P25054</a>   |
| Background:           | This gene encodes a tumor suppressor protein that acts as an antagonist of the Wnt signaling pathway. It is also involved in other processes including cell migration and adhesion, transcriptional activation, and apoptosis. Defects in this gene cause familial adenomatous polyposis (FAP), an autosomal dominant pre-malignant disease that usually progresses to malignancy. Disease-associated mutations tend to be clustered in a small region designated the mutation cluster region (MCR) and result in a truncated protein product. |
| Synonyms:             | BTPS2; DP2; DP2.5; DP3; GS; PPP1R46  |
| Protein Families:     | Druggable Genome   |



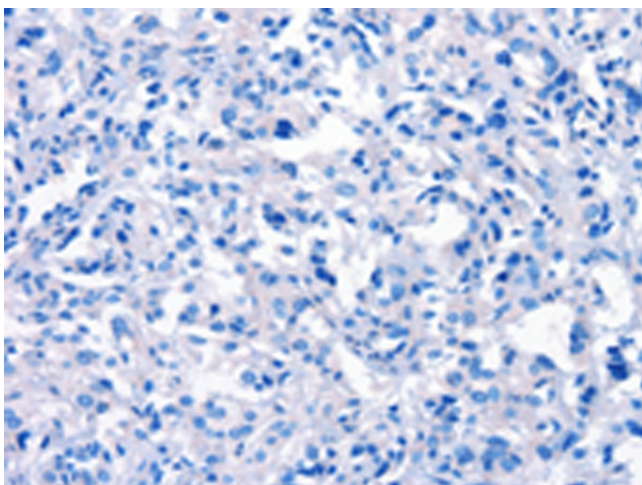
[View online »](#)

**Protein Pathways:** Basal cell carcinoma, Colorectal cancer, Endometrial cancer, Pathways in cancer, Regulation of actin cytoskeleton, Wnt signaling pathway

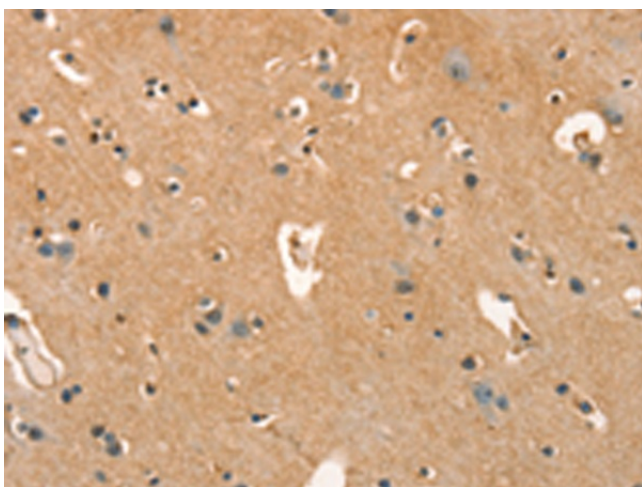
**Product images:**



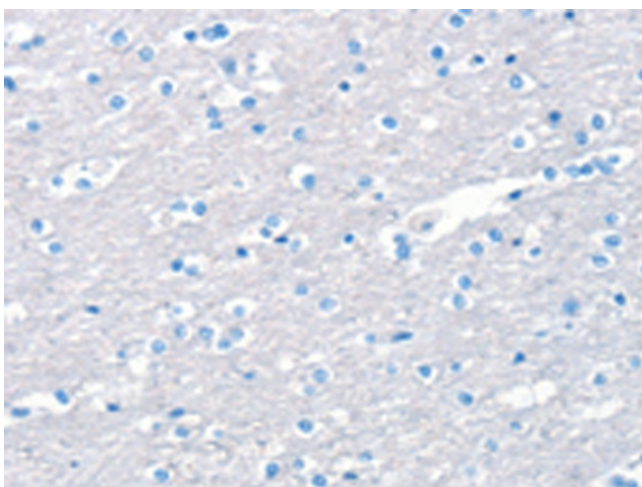
Immunohistochemistry of paraffin-embedded Human thyroid cancer tissue using TA350860 (APC Antibody) at dilution 1/25 (Original magnification:  $\times 200$ )



Immunohistochemistry of paraffin-embedded Human thyroid cancer tissue using TA350860 (APC Antibody) at dilution 1/25, treated with synthetic peptide. (Original magnification:  $\times 200$ )



Immunohistochemistry of paraffin-embedded Human brain tissue using TA350860 (APC Antibody) at dilution 1/25 (Original magnification: ×200)



Immunohistochemistry of paraffin-embedded Human brain tissue using TA350860 (APC Antibody) at dilution 1/25, treated with synthetic peptide. (Original magnification: ×200)