

Product datasheet for **TA350799**

BCMA (TNFRSF17) Rabbit Polyclonal Antibody

Product data:

Product Type:	Primary Antibodies
Applications:	IHC, WB
Recommended Dilution:	WB: 1000-5000 WB positive control: Mouse skeletal muscle tissue, SP20 cell lysate IHC: 50-100 Positive control: Human esophagus cancer Predicted cell location: Cytoplasm and Cell membrane
Reactivity:	Human, Mouse
Host:	Rabbit
Isotype:	IgG
Clonality:	Polyclonal
Immunogen:	Synthetic peptide of human TNFRSF17
Formulation:	pH7.4 PBS, 0.05% NaN ₃ , 40% Glycerol
Concentration:	lot specific
Purification:	Antigen affinity purification
Conjugation:	Unconjugated
Storage:	Store at -20°C as received.
Stability:	Stable for 12 months from date of receipt.
Predicted Protein Size:	20 kDa
Gene Name:	tumor necrosis factor receptor superfamily member 17
Database Link:	NP_001183 Entrez Gene 608 Human Q02223



[View online »](#)

Background:

The protein encoded by this gene is a member of the TNF-receptor superfamily. This receptor is preferentially expressed in mature B lymphocytes, and may be important for B cell development and autoimmune response. This receptor has been shown to specifically bind to the tumor necrosis factor (ligand) superfamily, member 13b (TNFSF13B/TALL-1/BAFF), and to lead to NF-kappaB and MAPK8/JNK activation. This receptor also binds to various TRAF family members, and thus may transduce signals for cell survival and proliferation

Synonyms:

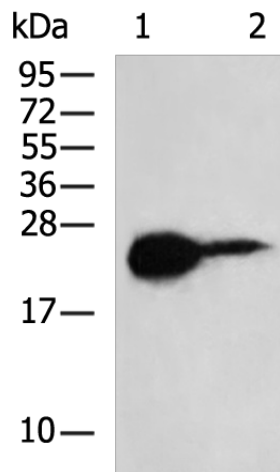
BCM; BCMA; CD269; TNFRSF13A

Protein Families:

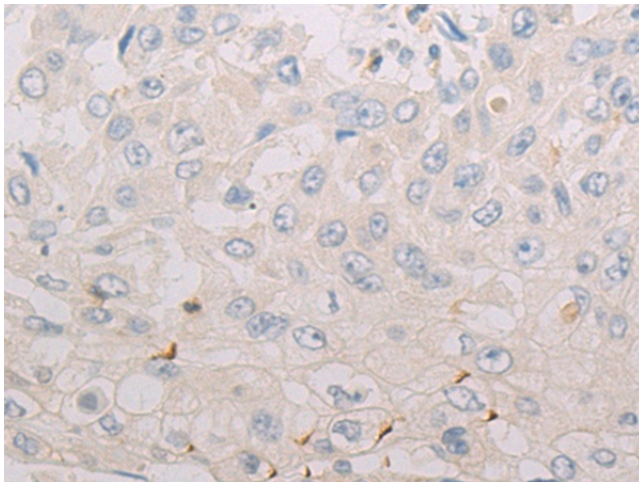
Druggable Genome, Transmembrane

Protein Pathways:

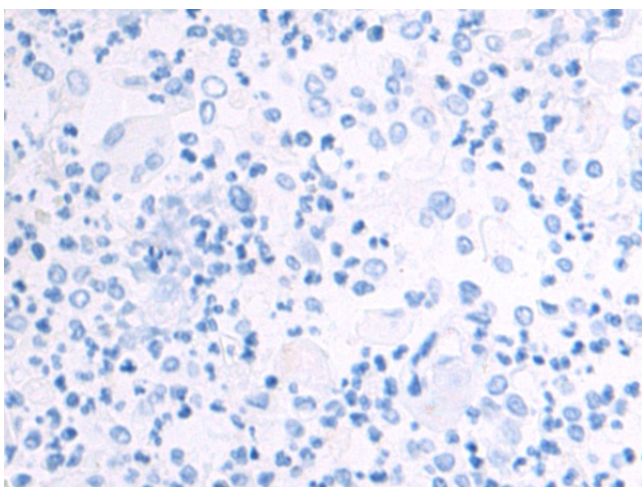
Cytokine-cytokine receptor interaction

Product images:


Gel: 12%SDS-PAGE
 Lysate: 40 µg
 Lane 1-2: Mouse skeletal muscle tissue
 SP20 cell lysate
 Primary antibody: TA350799 (TNFRSF17 Antibody)
 at dilution 1/700
 Secondary antibody: Goat anti rabbit IgG at
 1/5000 dilution
 Exposure time: 15 seconds



Immunohistochemistry of paraffin-embedded
 Human esophagus cancer tissue using TA350799
 (TNFRSF17 Antibody) at dilution 1/50 (Original
 magnification: ×200)



Immunohistochemistry of paraffin-embedded Human esophagus cancer tissue using TA350799 (TNFRSF17 Antibody) at dilution 1/50, treated with synthetic peptide. (Original magnification: $\times 200$)