

Product datasheet for **TA350736**

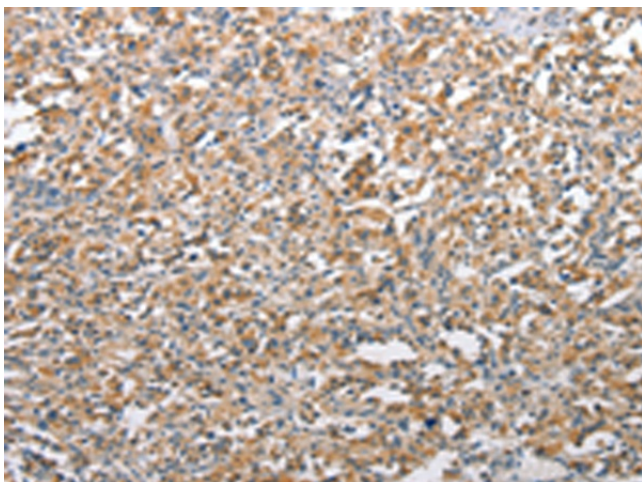
Tuberin (TSC2) Rabbit Polyclonal Antibody

Product data:

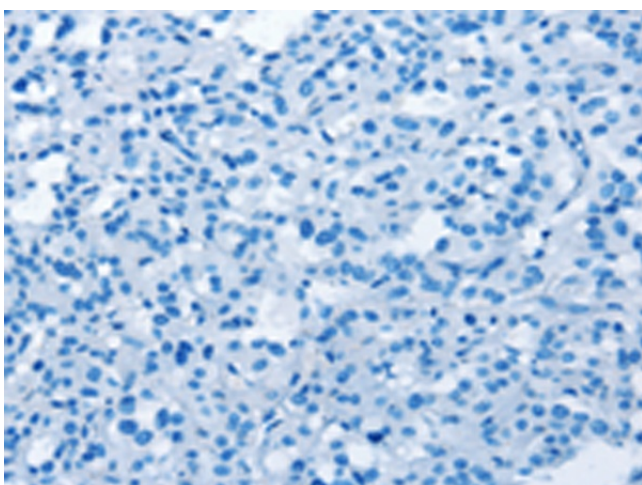
Product Type:	Primary Antibodies
Applications:	IHC
Recommended Dilution:	IHC: 25-100 Positive control: Human thyroid cancer Predicted cell location: Cytoplasm
Reactivity:	Human, Mouse, Rat
Host:	Rabbit
Isotype:	IgG
Clonality:	Polyclonal
Immunogen:	Synthetic peptide of human TSC2
Formulation:	pH7.4 PBS, 0.05% NaN ₃ , 40% Glycerol
Concentration:	lot specific
Purification:	Antigen affinity purification
Conjugation:	Unconjugated
Storage:	Store at -20°C as received.
Stability:	Stable for 12 months from date of receipt.
Gene Name:	tuberous sclerosis 2
Database Link:	NP_001070651 Entrez Gene 22084 Mouse Entrez Gene 24855 Rat Entrez Gene 7249 Human P49815
Background:	Mutations in this gene lead to tuberous sclerosis complex. Its gene product is believed to be a tumor suppressor and is able to stimulate specific GTPases. The protein associates with hamartin in a cytosolic complex, possibly acting as a chaperone for hamartin. Alternative splicing results in multiple transcript variants encoding different isoforms.
Synonyms:	LAM; PPP1R160; TSC4
Protein Families:	Druggable Genome
Protein Pathways:	Insulin signaling pathway, mTOR signaling pathway, p53 signaling pathway



[View online »](#)

Product images:

Immunohistochemistry of paraffin-embedded Human thyroid cancer tissue using TA350736 (TSC2 Antibody) at dilution 1/25 (Original magnification: $\times 200$)



Immunohistochemistry of paraffin-embedded Human thyroid cancer tissue using TA350736 (TSC2 Antibody) at dilution 1/25, treated with synthetic peptide. (Original magnification: $\times 200$)