

## Product datasheet for **TA350575**

### PP5 (PPP5C) Rabbit Polyclonal Antibody

#### Product data:

Product Type:	Primary Antibodies
Applications:	IHC, WB
Recommended Dilution:	WB: 200-1000 WB positive control: A375 cell IHC: 25-100 Positive control: Human liver cancer Predicted cell location: Cytoplasm
Reactivity:	Human, Mouse, Rat
Host:	Rabbit
Isotype:	IgG
Clonality:	Polyclonal
Immunogen:	Fusion protein of human PPP5C
Formulation:	pH7.4 PBS, 0.05% NaN <sub>3</sub> , 40% Glycerol
Concentration:	lot specific
Purification:	Antigen affinity purification
Conjugation:	Unconjugated
Storage:	Store at -20°C as received.
Stability:	Stable for 12 months from date of receipt.
Predicted Protein Size:	57 kDa
Gene Name:	protein phosphatase 5 catalytic subunit
Database Link:	<a href="#">NP_006238</a> <a href="#">Entrez Gene 65179 Rat</a> <a href="#">Entrez Gene 5536 Human</a> <a href="#">P53041</a>



[View online »](#)

**Background:**

This gene encodes a serine/threonine phosphatase which is a member of the protein phosphatase catalytic subunit family. Proteins in this family participate in pathways regulated by reversible phosphorylation at serine and threonine residues; many of these pathways are involved in the regulation of cell growth and differentiation. The product of this gene has been shown to participate in signaling pathways in response to hormones or cellular stress, and elevated levels of this protein may be associated with breast cancer development.

**Synonyms:**

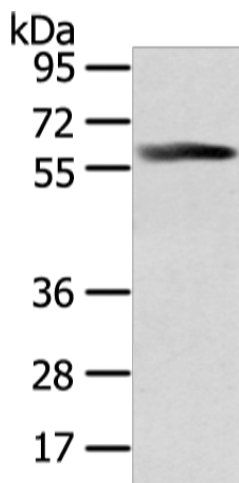
PP5; PPP5; PPT

**Protein Families:**

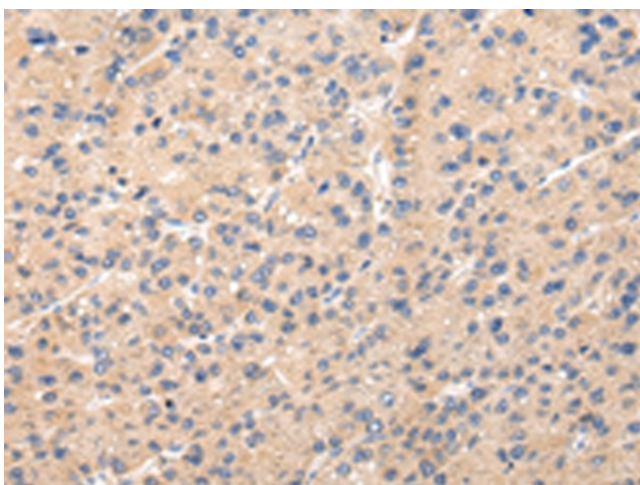
Druggable Genome, Transcription Factors

**Protein Pathways:**

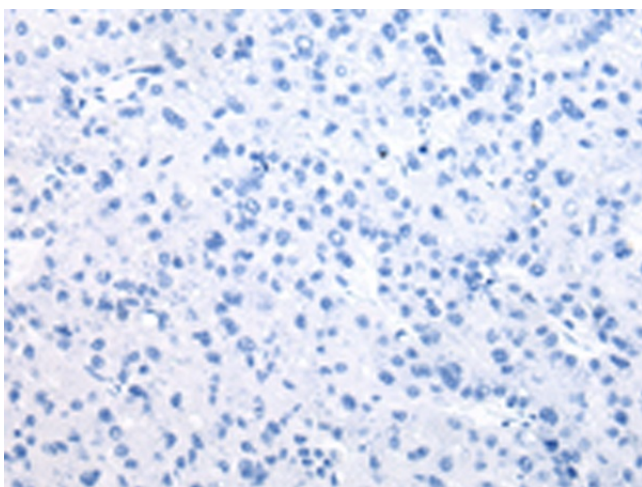
MAPK signaling pathway

**Product images:**

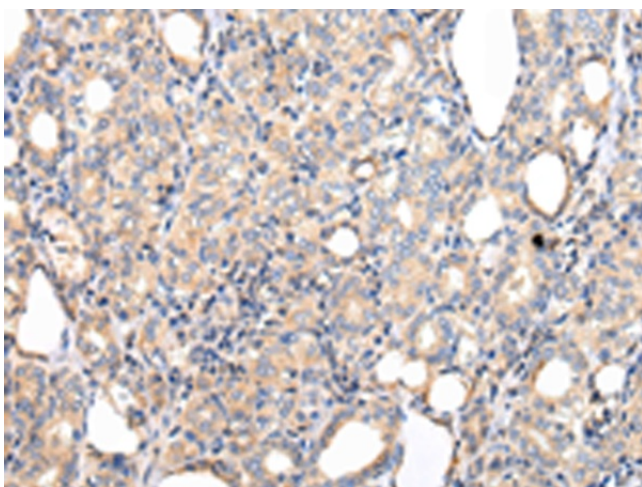
Gel: 8%SDS-PAGE  
Lysate: 40 µg  
Lane: A375 cell  
Primary antibody: TA350575 (PPP5C Antibody) at dilution 1/300  
Secondary antibody: Goat anti rabbit IgG at 1/8000 dilution  
Exposure time: 30 seconds



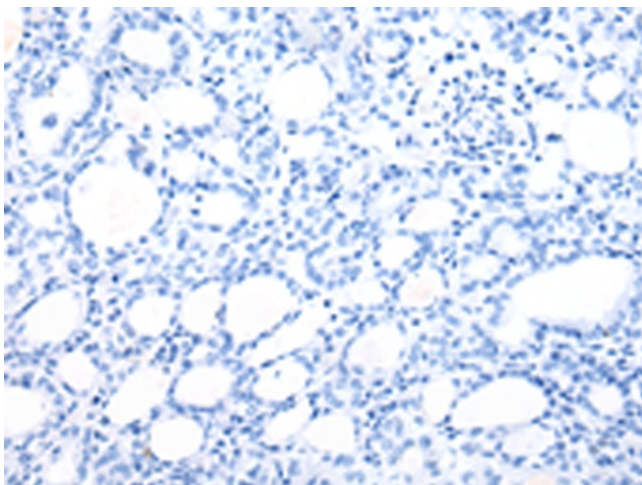
Immunohistochemistry of paraffin-embedded Human liver cancer tissue using TA350575 (PPP5C Antibody) at dilution 1/20 (Original magnification: ×200)



Immunohistochemistry of paraffin-embedded Human liver cancer tissue using TA350575 (PPP5C Antibody) at dilution 1/20, treated with fusion protein. (Original magnification:  $\times 200$ )



Immunohistochemistry of paraffin-embedded Human thyroid cancer tissue using TA350575 (PPP5C Antibody) at dilution 1/20 (Original magnification:  $\times 200$ )



Immunohistochemistry of paraffin-embedded Human thyroid cancer tissue using TA350575 (PPP5C Antibody) at dilution 1/20, treated with fusion protein. (Original magnification:  $\times 200$ )