

Product datasheet for **TA350478**

TAF11 Rabbit Polyclonal Antibody

Product data:

Product Type:	Primary Antibodies
Applications:	IHC, WB
Recommended Dilution:	WB: 500-2000 WB positive control: Mouse brain and heart tissue, Jurkat, K562 and hela cells IHC: 35-150 Positive control: Human thyroid cancer Predicted cell location: Cytoplasm
Reactivity:	Human, Mouse, Rat
Host:	Rabbit
Isotype:	IgG
Clonality:	Polyclonal
Immunogen:	Fusion protein of human TAF11
Formulation:	pH7.4 PBS, 0.05% NaN ₃ , 40% Glycerol
Concentration:	lot specific
Purification:	Antigen affinity purification
Conjugation:	Unconjugated
Storage:	Store at -20°C as received.
Stability:	Stable for 12 months from date of receipt.
Predicted Protein Size:	23 kDa
Gene Name:	TATA-box binding protein associated factor 11
Database Link:	NP_005634 Entrez Gene 6882 Human Q15544



[View online »](#)

Background:

Initiation of transcription by RNA polymerase II requires the activities of more than 70 polypeptides. The protein that coordinates these activities is transcription factor IID (TFIID), which binds to the core promoter to position the polymerase properly, serves as the scaffold for assembly of the remainder of the transcription complex, and acts as a channel for regulatory signals. TFIID is composed of the TATA-binding protein (TBP) and a group of evolutionarily conserved proteins known as TBP-associated factors or TAFs. TAFs may participate in basal transcription, serve as coactivators, function in promoter recognition or modify general transcription factors (GTFs) to facilitate complex assembly and transcription initiation. This gene encodes a small subunit of TFIID that is present in all TFIID complexes and interacts with TBP. This subunit also interacts with another small subunit, TAF13, to form a heterodimer with a structure similar to the histone core structure. Two transcript variants encoding different isoforms have been found for this gene.

Synonyms:

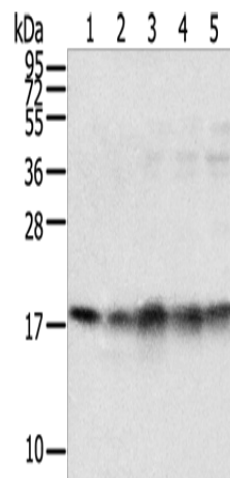
MGC:15243; PRO2134; TAF2I; TAFII28

Protein Families:

Transcription Factors

Protein Pathways:

Basal transcription factors

Product images:

Gel: 12%SDS-PAGE

Lysate: 40 µg

Lane 1-5: Mouse brain tissue

Mouse heart tissue

Jurkat cells

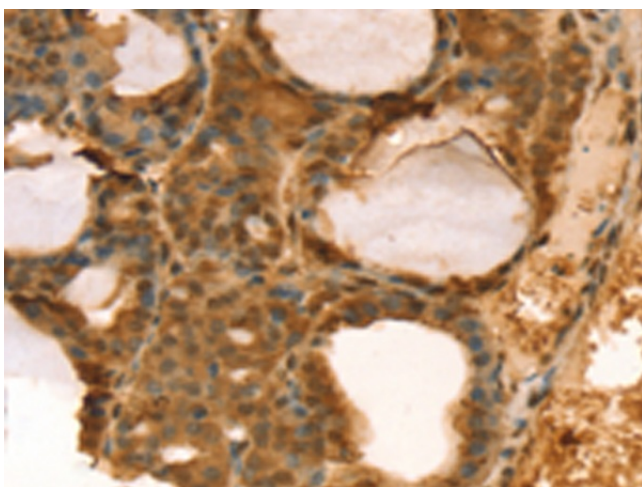
K562 cells

hela cells

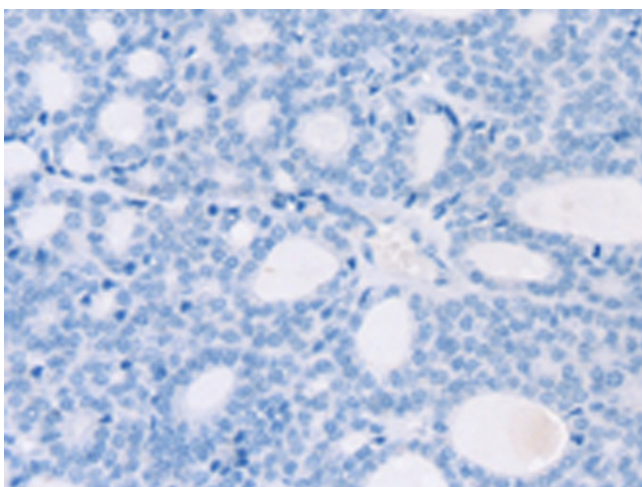
Primary antibody: TA350478 (TAF11 Antibody) at dilution 1/800

Secondary antibody: Goat anti rabbit IgG at 1/8000 dilution

Exposure time: 20 seconds



Immunohistochemistry of paraffin-embedded Human thyroid cancer tissue using TA350478 (TAF11 Antibody) at dilution 1/40 (Original magnification: $\times 200$)



Immunohistochemistry of paraffin-embedded Human thyroid cancer tissue using TA350478 (TAF11 Antibody) at dilution 1/40, treated with fusion protein. (Original magnification: $\times 200$)