

Product datasheet for **TA350178**

Mitochondrial ribosomal protein L11 (MRPL11) Rabbit Polyclonal Antibody

Product data:

Product Type:	Primary Antibodies
Applications:	IHC, WB
Recommended Dilution:	WB: 500-2000 WB positive control: Jurkat, K562, Incap, hepg2 and hela cells IHC: 50-200 Positive control: Human lung cancer Predicted cell location: Cytoplasm
Reactivity:	Human, Mouse, Rat
Host:	Rabbit
Isotype:	IgG
Clonality:	Polyclonal
Immunogen:	Fusion protein of human MRPL11
Formulation:	pH7.4 PBS, 0.05% NaN ₃ , 40% Glycerol
Concentration:	lot specific
Purification:	Antigen affinity purification
Conjugation:	Unconjugated
Storage:	Store at -20°C as received.
Stability:	Stable for 12 months from date of receipt.
Predicted Protein Size:	21 kDa
Gene Name:	mitochondrial ribosomal protein L11
Database Link:	NP_733934 Entrez Gene 65003 Human Q9Y3B7



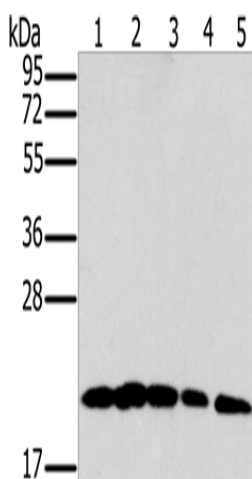
[View online »](#)

Background:

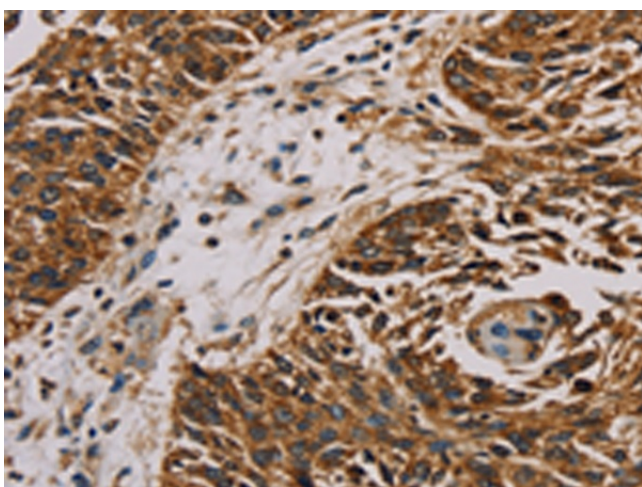
Mammalian mitochondrial ribosomal proteins are encoded by nuclear genes and help in protein synthesis within the mitochondrion. Mitochondrial ribosomes (mitoribosomes) consist of a small 28S subunit and a large 39S subunit. They have an estimated 75% protein to rRNA composition compared to prokaryotic ribosomes, where this ratio is reversed. Another difference between mammalian mitoribosomes and prokaryotic ribosomes is that the latter contain a 5S rRNA. Among different species, the proteins comprising the mitoribosome differ greatly in sequence, and sometimes in biochemical properties, which prevents easy recognition by sequence homology.

Synonyms:

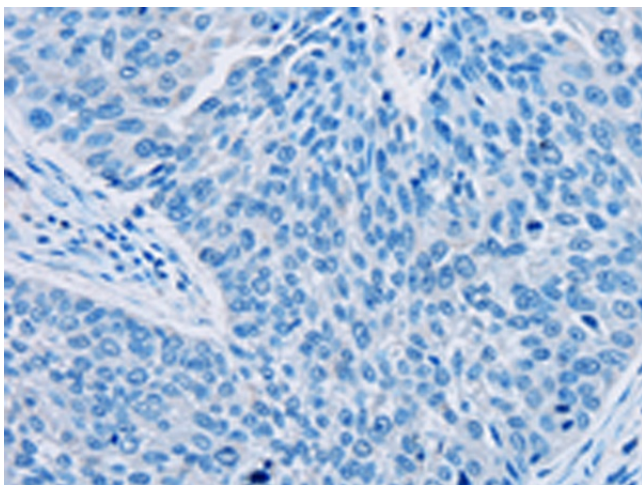
CGI-113; L11MT; MRP-L11

Product images:


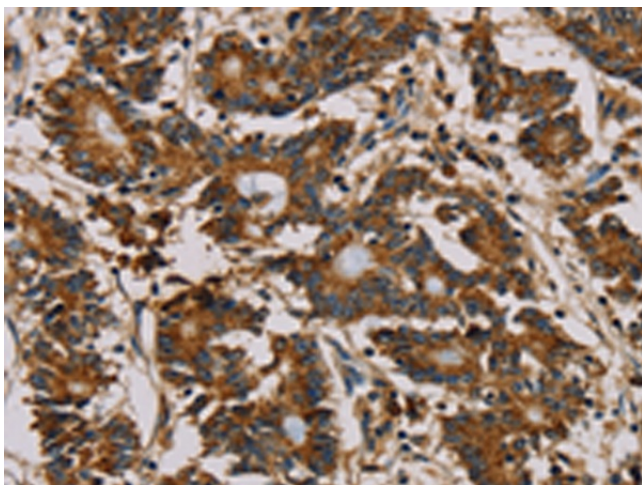
Gel: 10%SDS-PAGE
 Lysate: 40 µg
 Lane 1-5: Jurkat cells
 K562 cells
 Incap cells
 hepg2 cells
 hela cells
 Primary antibody: TA350178 (MRPL11 Antibody)
 at dilution 1/300
 Secondary antibody: Goat anti rabbit IgG at
 1/8000 dilution
 Exposure time: 15 seconds



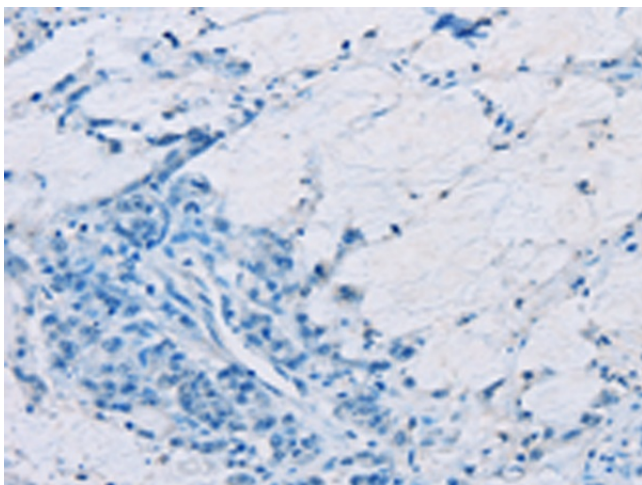
Immunohistochemistry of paraffin-embedded
 Human lung cancer tissue using TA350178
 (MRPL11 Antibody) at dilution 1/20 (Original
 magnification: ×200)



Immunohistochemistry of paraffin-embedded Human lung cancer tissue using TA350178 (MRPL11 Antibody) at dilution 1/20, treated with fusion protein. (Original magnification: ×200)



Immunohistochemistry of paraffin-embedded Human colon cancer tissue using TA350178 (MRPL11 Antibody) at dilution 1/20 (Original magnification: ×200)



Immunohistochemistry of paraffin-embedded Human colon cancer tissue using TA350178 (MRPL11 Antibody) at dilution 1/20, treated with fusion protein. (Original magnification: ×200)