

Product datasheet for **TA350152**

TAB1 Rabbit Polyclonal Antibody

Product data:

Product Type:	Primary Antibodies
Applications:	IHC, WB
Recommended Dilution:	ELISA: 1000-2000, WB: 200-1000, IHC: 100-300
Reactivity:	Human, Mouse
Host:	Rabbit
Isotype:	IgG
Clonality:	Polyclonal
Immunogen:	Fusion protein of human TAB1
Formulation:	pH7.4 PBS, 0.05% NaN ₃ , 40% Glycerol
Concentration:	lot specific
Purification:	Antigen affinity purification
Conjugation:	Unconjugated
Storage:	Store at -20°C as received.
Stability:	Stable for 12 months from date of receipt.
Predicted Protein Size:	55 kDa
Gene Name:	TGF-beta activated kinase 1/MAP3K7 binding protein 1
Database Link:	NP_006107 Entrez Gene 66513 Mouse Entrez Gene 10454 Human Q15750

Background: The protein encoded by this gene was identified as a regulator of the MAP kinase kinase kinase MAP3K7/TAK1, which is known to mediate various intracellular signaling pathways, such as those induced by TGF beta, interleukin 1, and WNT-1. This protein interacts and thus activates TAK1 kinase. It has been shown that the C-terminal portion of this protein is sufficient for binding and activation of TAK1, while a portion of the N-terminus acts as a dominant-negative inhibitor of TGF beta, suggesting that this protein may function as a mediator between TGF beta receptors and TAK1.

Synonyms: 3-Tab1; 3'-Tab1; MAP3K7IP1

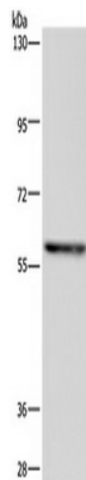


[View online »](#)

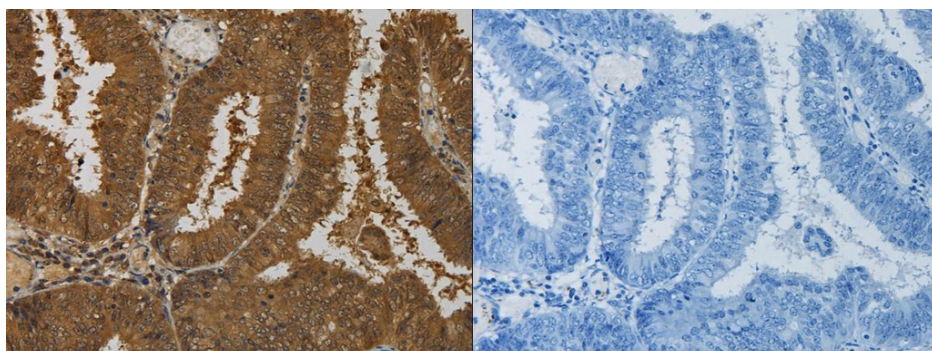
Protein Families: Druggable Genome

Protein Pathways: MAPK signaling pathway, NOD-like receptor signaling pathway, Toll-like receptor signaling pathway

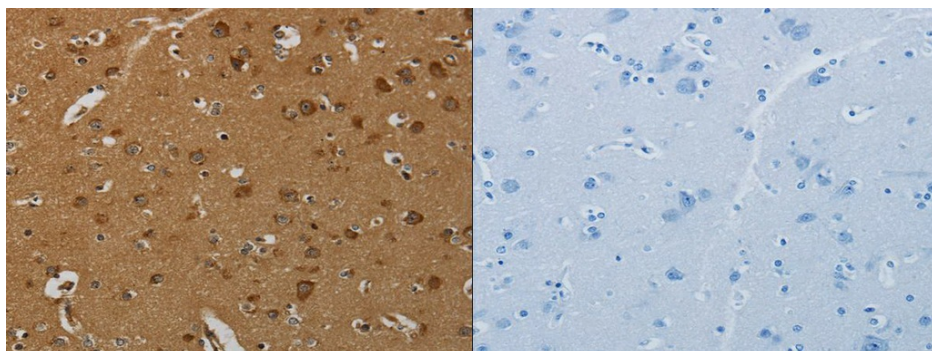
Product images:



Gel: 6%SDS-PAGE, Lysate: 40 ug, Lane: 293T cells, Primary antibody: (TAB1 Antibody) at dilution 1/350, Secondary antibody: Goat anti rabbit IgG at 1/8000 dilution, Exposure time: 20 seconds



The image on the left is immunohistochemistry of paraffin-embedded Human colon cancer tissue using (TAB1 Antibody) at dilution 1/50, on the right is treated with fusion protein. (Original magnification: $\times 200$)



The image on the left is immunohistochemistry of paraffin-embedded Human brain tissue using (TAB1 Antibody) at dilution 1/50, on the right is treated with fusion protein. (Original magnification: $\times 200$)