

## Product datasheet for **TA350108**

### gamma Catenin (JUP) Rabbit Polyclonal Antibody

#### Product data:

Product Type:	Primary Antibodies
Applications:	IHC, WB
Recommended Dilution:	WB: 1000-5000 WB positive control: Mouse heart tissue and Hela cells, HUVEC cells and mouse skin tissue IHC: 50-200 Positive control: Human cervical cancer Predicted cell location: Cytoplasm
Reactivity:	Human, Mouse, Rat
Host:	Rabbit
Isotype:	IgG
Clonality:	Polyclonal
Immunogen:	Fusion protein of human JUP
Formulation:	pH7.4 PBS, 0.05% NaN <sub>3</sub> , 40% Glycerol
Concentration:	lot specific
Purification:	Antigen affinity purification
Conjugation:	Unconjugated
Storage:	Store at -20°C as received.
Stability:	Stable for 12 months from date of receipt.
Predicted Protein Size:	82 kDa
Gene Name:	junction plakoglobin
Database Link:	<a href="#">NP_002221</a> <a href="#">Entrez Gene 16480 Mouse</a> <a href="#">Entrez Gene 81679 Rat</a> <a href="#">Entrez Gene 3728 Human</a> <a href="#">P14923</a>



[View online »](#)

**Background:**

This gene encodes a major cytoplasmic protein which is the only known constituent common to submembranous plaques of both desmosomes and intermediate junctions. This protein forms distinct complexes with cadherins and desmosomal cadherins and is a member of the catenin family since it contains a distinct repeating amino acid motif called the armadillo repeat. Mutation in this gene has been associated with Naxos disease. Alternative splicing occurs in this gene; however, not all transcripts have been fully described.

**Synonyms:**

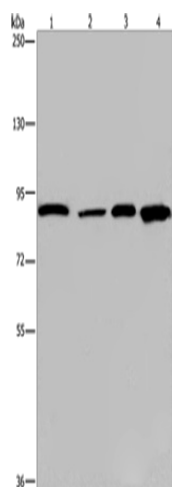
ARVD12; CTNNG; DP3; DPIII; PDGB; PKGB

**Protein Families:**

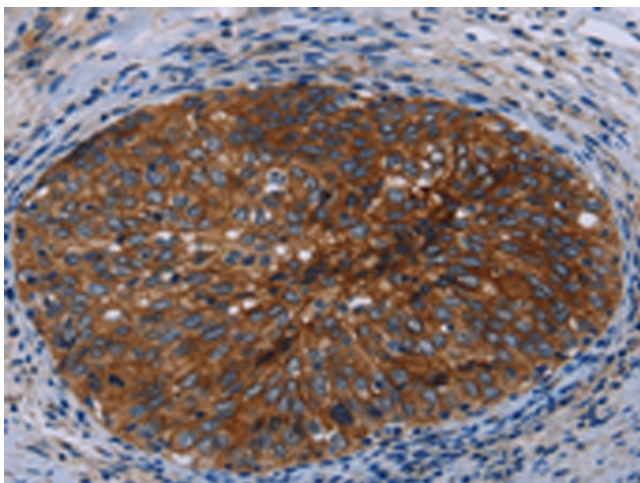
Druggable Genome

**Protein Pathways:**

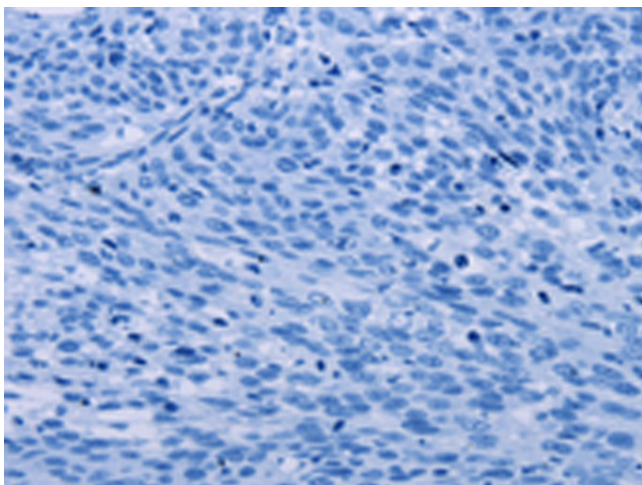
Acute myeloid leukemia, Arrhythmogenic right ventricular cardiomyopathy (ARVC), Pathways in cancer

**Product images:**


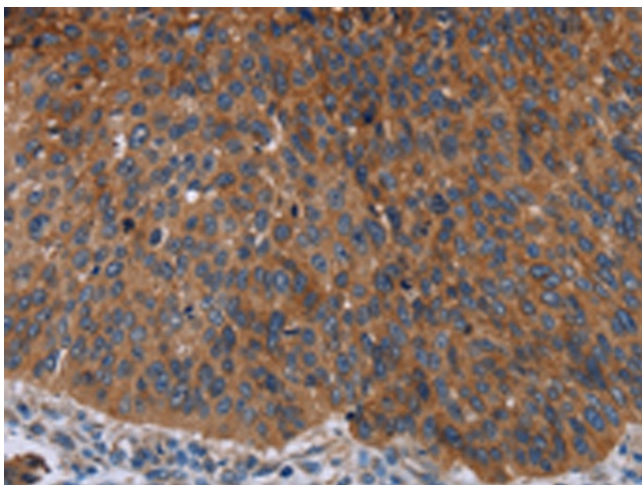
Gel: 6%SDS-PAGE  
 Lysate: 40 µg  
 Lane 1-4: Mouse heart tissue  
 HeLa cells  
 HUVEC cells  
 mouse skin tissue  
 Primary antibody: TA350108 (JUP Antibody) at dilution 1/1150  
 Secondary antibody: Goat anti rabbit IgG at 1/8000 dilution  
 Exposure time: 10 seconds



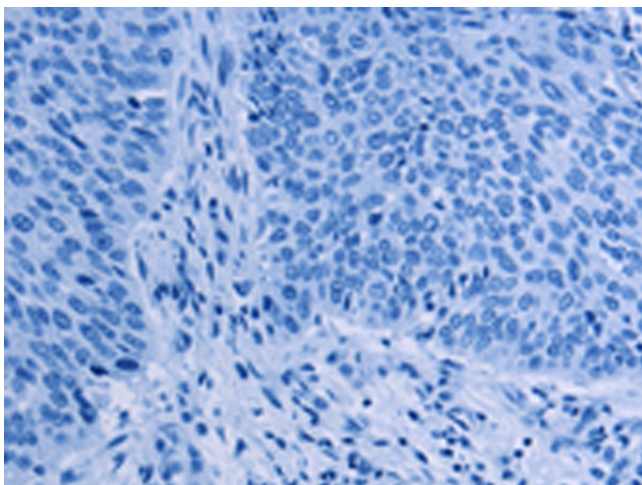
Immunohistochemistry of paraffin-embedded Human cervical cancer tissue using TA350108 (JUP Antibody) at dilution 1/50 (Original magnification: ×200)



Immunohistochemistry of paraffin-embedded Human cervical cancer tissue using TA350108 (JUP Antibody) at dilution 1/50, treated with fusion protein. (Original magnification: ×200)



Immunohistochemistry of paraffin-embedded Human lung cancer tissue using TA350108 (JUP Antibody) at dilution 1/50 (Original magnification: ×200)



Immunohistochemistry of paraffin-embedded Human lung cancer tissue using TA350108 (JUP Antibody) at dilution 1/50, treated with fusion protein. (Original magnification: ×200)