

## Product datasheet for **TA350046**

### **HIST1H2AH Rabbit Polyclonal Antibody**

#### **Product data:**

<b>Product Type:</b>	Primary Antibodies
<b>Applications:</b>	IHC, WB
<b>Recommended Dilution:</b>	WB: 500-2000 WB positive control: K562, Raji, HeLa and 293T cells IHC: 50-200 Positive control: Human liver cancer Predicted cell location: Nucleus
<b>Reactivity:</b>	Human, Mouse
<b>Host:</b>	Rabbit
<b>Isotype:</b>	IgG
<b>Clonality:</b>	Polyclonal
<b>Immunogen:</b>	Fusion protein of human HIST1H2AH
<b>Formulation:</b>	pH7.4 PBS, 0.05% NaN <sub>3</sub> , 40% Glycerol
<b>Concentration:</b>	lot specific
<b>Purification:</b>	Antigen affinity purification
<b>Conjugation:</b>	Unconjugated
<b>Storage:</b>	Store at -20°C as received.
<b>Stability:</b>	Stable for 12 months from date of receipt.
<b>Predicted Protein Size:</b>	14 kDa
<b>Gene Name:</b>	histone cluster 1, H2ah
<b>Database Link:</b>	<a href="#">NP_542163</a> <a href="#">Entrez Gene 85235 Human</a> <a href="#">Q96KK5</a>



[View online »](#)

**Background:**

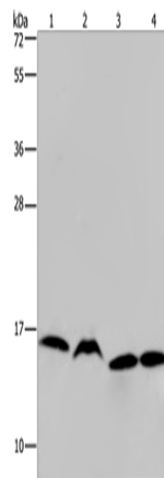
Histones are basic nuclear proteins that are responsible for the nucleosome structure of the chromosomal fiber in eukaryotes. Two molecules of each of the four core histones (H2A, H2B, H3, and H4) form an octamer, around which approximately 146 bp of DNA is wrapped in repeating units, called nucleosomes. The linker histone, H1, interacts with linker DNA between nucleosomes and functions in the compaction of chromatin into higher order structures. This gene is intronless and encodes a member of the histone H2A family. Transcripts from this gene lack polyA tails but instead contain a palindromic termination element. This gene is found in the histone microcluster on chromosome 6p21.33.

**Synonyms:**

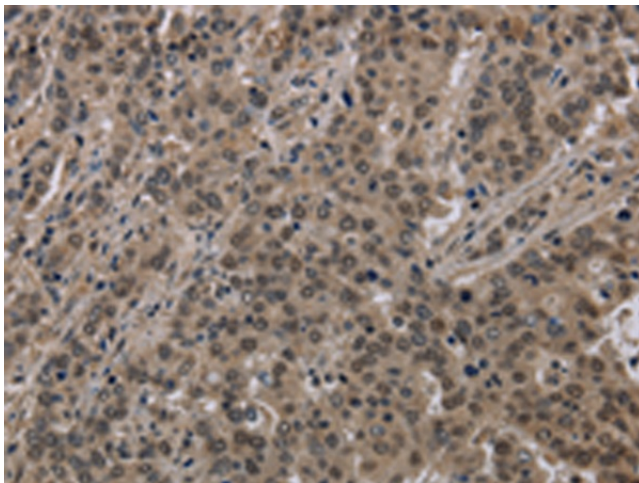
dj86C11.1; H2A; H2AFALii; H2AH; S

**Protein Pathways:**

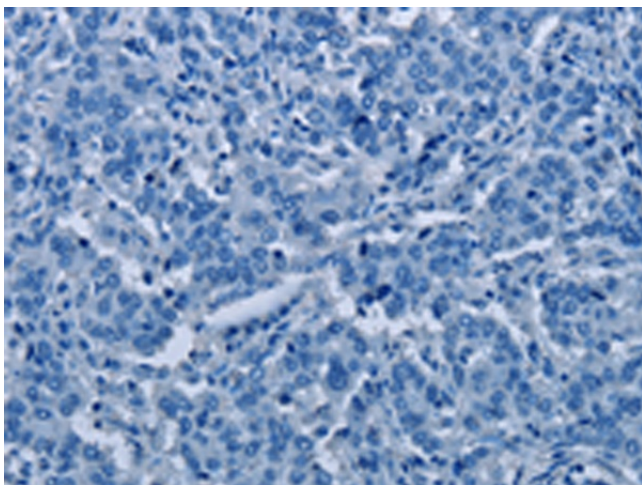
Systemic lupus erythematosus

**Product images:**

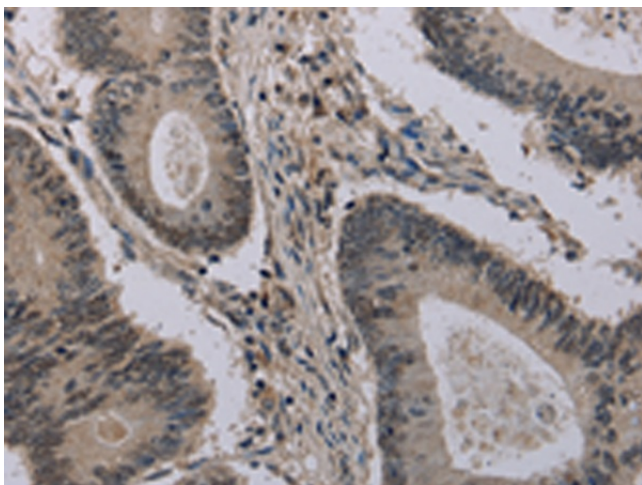
Gel: 10%SDS-PAGE  
Lysate: 40 µg  
Lane 1-4: K562 cells  
Raji cells  
HeLa cells  
293T cells  
Primary antibody: TA350046 (H2A12 Antibody)  
at dilution 1/250  
Secondary antibody: Goat anti rabbit IgG at  
1/8000 dilution  
Exposure time: 10 seconds



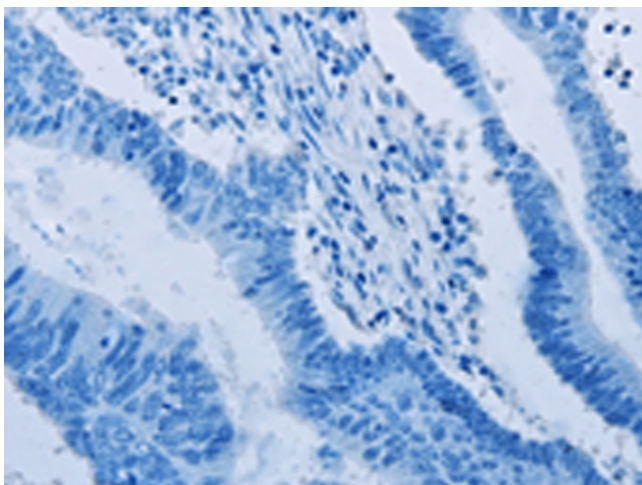
Immunohistochemistry of paraffin-embedded  
Human liver cancer tissue using TA350046  
(H2A12 Antibody) at dilution 1/40 (Original  
magnification: ×200)



Immunohistochemistry of paraffin-embedded Human liver cancer tissue using TA350046 (H2AC12 Antibody) at dilution 1/40, treated with fusion protein. (Original magnification: ×200)



Immunohistochemistry of paraffin-embedded Human colon cancer tissue using TA350046 (H2AC12 Antibody) at dilution 1/40 (Original magnification: ×200)



Immunohistochemistry of paraffin-embedded Human colon cancer tissue using TA350046 (H2AC12 Antibody) at dilution 1/40, treated with fusion protein. (Original magnification: ×200)