

## Product datasheet for **TA349957**

### **PYK2 (PTK2B) Rabbit Polyclonal Antibody**

#### **Product data:**

Product Type:	Primary Antibodies
Applications:	IHC, WB
Recommended Dilution:	WB: 500-2000 WB positive control: Raji cells IHC: 50-200 Positive control: Human brain Predicted cell location: Nucleus and Cytoplasm
Reactivity:	Human, Mouse, Rat
Host:	Rabbit
Isotype:	IgG
Clonality:	Polyclonal
Immunogen:	Fusion protein of human PTK2B
Formulation:	pH7.4 PBS, 0.05% NaN <sub>3</sub> , 40% Glycerol
Concentration:	lot specific
Purification:	Antigen affinity purification
Conjugation:	Unconjugated
Storage:	Store at -20°C as received.
Stability:	Stable for 12 months from date of receipt.
Predicted Protein Size:	116 kDa
Gene Name:	protein tyrosine kinase 2 beta
Database Link:	<a href="#">NP_004094</a> <a href="#">Entrez Gene 19229 Mouse</a> <a href="#">Entrez Gene 50646 Rat</a> <a href="#">Entrez Gene 2185 Human</a> <a href="#">Q14289</a>



[View online »](#)

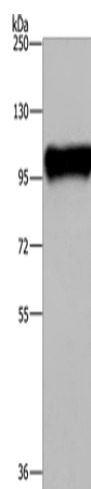
**Background:** This gene encodes a cytoplasmic protein tyrosine kinase which is involved in calcium-induced regulation of ion channels and activation of the map kinase signaling pathway. The encoded protein may represent an important signaling intermediate between neuropeptide-activated receptors or neurotransmitters that increase calcium flux and the downstream signals that regulate neuronal activity. The encoded protein undergoes rapid tyrosine phosphorylation and activation in response to increases in the intracellular calcium concentration, nicotinic acetylcholine receptor activation, membrane depolarization, or protein kinase C activation.

**Synonyms:** CADTK; CAKB; FADK2; FAK2; PKB; PTK; PYK2; RAFTK

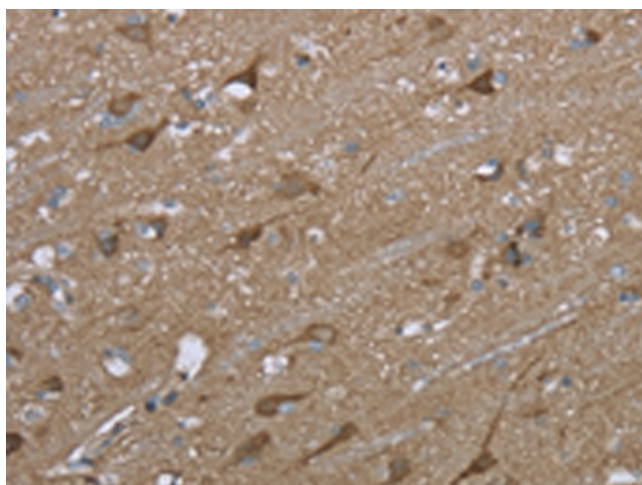
**Protein Families:** Druggable Genome, Protein Kinase

**Protein Pathways:** Calcium signaling pathway, Chemokine signaling pathway, GnRH signaling pathway, Leukocyte transendothelial migration, Natural killer cell mediated cytotoxicity

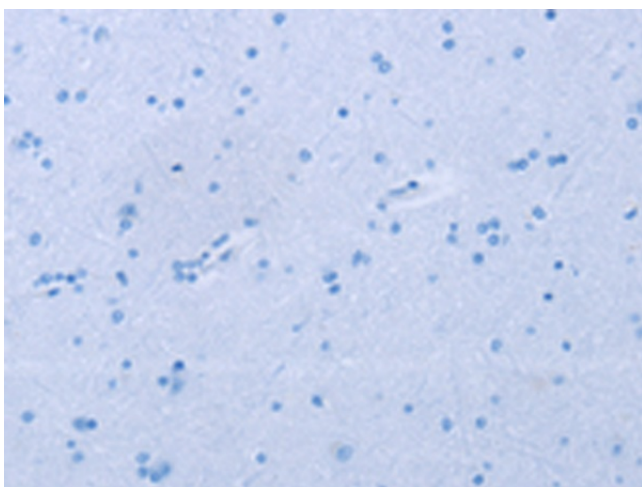
### Product images:



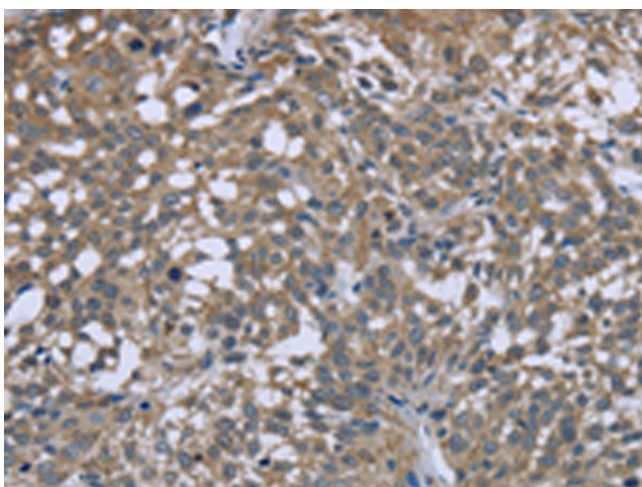
Gel: 6%SDS-PAGE  
Lysate: 40  $\mu$ g  
Lane: Raji cells  
Primary antibody: TA349957 (PTK2B Antibody) at dilution 1/300  
Secondary antibody: Goat anti rabbit IgG at 1/8000 dilution  
Exposure time: 1 minute



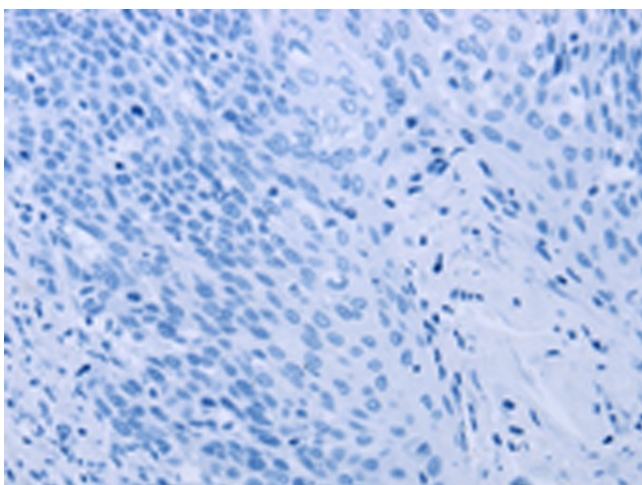
Immunohistochemistry of paraffin-embedded Human brain tissue using TA349957 (PTK2B Antibody) at dilution 1/50 (Original magnification:  $\times$ 200)



Immunohistochemistry of paraffin-embedded Human brain tissue using TA349957 (PTK2B Antibody) at dilution 1/50, treated with fusion protein. (Original magnification: x200)



Immunohistochemistry of paraffin-embedded Human cervical cancer tissue using TA349957 (PTK2B Antibody) at dilution 1/50 (Original magnification: x200)



Immunohistochemistry of paraffin-embedded Human cervical cancer tissue using TA349957 (PTK2B Antibody) at dilution 1/50, treated with fusion protein. (Original magnification: x200)